



TALBALBA HEREFORDS



AuctionsPlus
The Digital Ag Market



6TH
ON PROPERTY
SALE

71
BULLS

**11:30am THURSDAY
25 AUGUST 2022**

"Delemere"
1392 Nicol Creek Road
Millmerran (Bringalily) QLD

**2021 TOP SELLER. TALBALBA CONRAD Q086
SOLD \$30,000 TO IAN AND DARYL BJORKSTEN.**



*Pictured with Mark Duthie,GDL, Steve Reid, Daryl Bjorksten,
Antoinette Sweetman and Deb Reid.*



TALBALBA TECHNO R036 (AI) (S)

Welcome to



TALBALBA HEREFORDS

6TH ON-PROPERTY SALE

Thursday 25 August 2022 commencing at 11:30am
"Delemere", 1392 Nicol Creek Road, Millmerran (Bringalily) QLD

Complete Hereford Group Breedplan data

Genomics

Semen tested including Morphology

Blooded, Inoculated 5 in 1, Pestigard, Vibrio and B.E.F (3 day sickness)

Online bidding option with Auctions Plus

DELIVERY:

**All bulls purchased will be delivered free to your door
within 500km radius or by prior arrangement.**

VENDORS

Steve and Deb Reid

Phone (07) 46 957182

Steve mobile 0427 631014

Deb mobile 0438 656424

Email: talbalbastud@bigpond.com

Web: www.talbalba.com

AGENTS



Nutrien Livestock™

Dalby Office 07 4669 6955

Mark Duthie 0448 016 950
(Stud stock and Auctioneer)

Harvey Weyman-Jones 0414 941 788
(Stud stock)

Peter Daniel 0428 790 967
(Dalby Branch Manager)

Toowoomba Office 07 4637 3000

Colbe Ede 0417 265 980
(Stud stock and Auctioneer)

Simon Booth 0438 756 245
(Livestock)

Andrew Costello 0429 485 191
(Livestock)

Welcome to our 6th on-property sale, 2022

THE CATTLE INDUSTRY and agriculture in general is benefitting from a great season and a renewed recognition of what's important in life – food, shelter and energy. Let's hope our government has the good sense to protect food production from the external challenges of disease and climate policy. While we have to be responsible global citizens, a recent research paper by Dr Bill Burrows questions the basis for Kyoto and will take a lot of pressure off agriculture if accepted by government. As an industry we need to champion this research at every opportunity. The article titled Renowned scientist says Australia could already be at

"net zero" is in the News section of Beef Central on 16/05/2022 for those interested in having a read.

This years draft of bulls was conceived at the peak of the drought and over a third of them were almost sold to JBS in utero as we gave up hope that it would ever rain. They sell into the best season and market combination that we have ever seen, showing agriculture normally pays you back if you stick with it. The bulls are deep bodied and very thick, the type that will put on weight quickly when feed is abundant, but also hold up when times are tough.

We have catalogued a few more bulls this year to help everyone get the bulls they need and to take a bit of pressure off the market. We have been able to do this without lowering our standards as this have always been an exceptional group. There are some strong sire lines with 10 Technos, 13 going back to the Victor bull and new sire lines in Genesis and Fort.

Preparation has been relatively easy this season and once again no grain or pellets have been used on these bulls. Their feet and legs are excellent and they will present really well. While the general theme of this draft is carcase quality, we do have some variations with high growth bulls, particularly the Technos, some with more moderate maturity, and some very good heifer options.

We welcome visitors at any time prior to sale or call us if we can help with your particular needs. We look forward to seeing you on the 25th August.



Steve and Deb Reid

Kind regards,

Steve and Deb

NOTES TO BUYERS

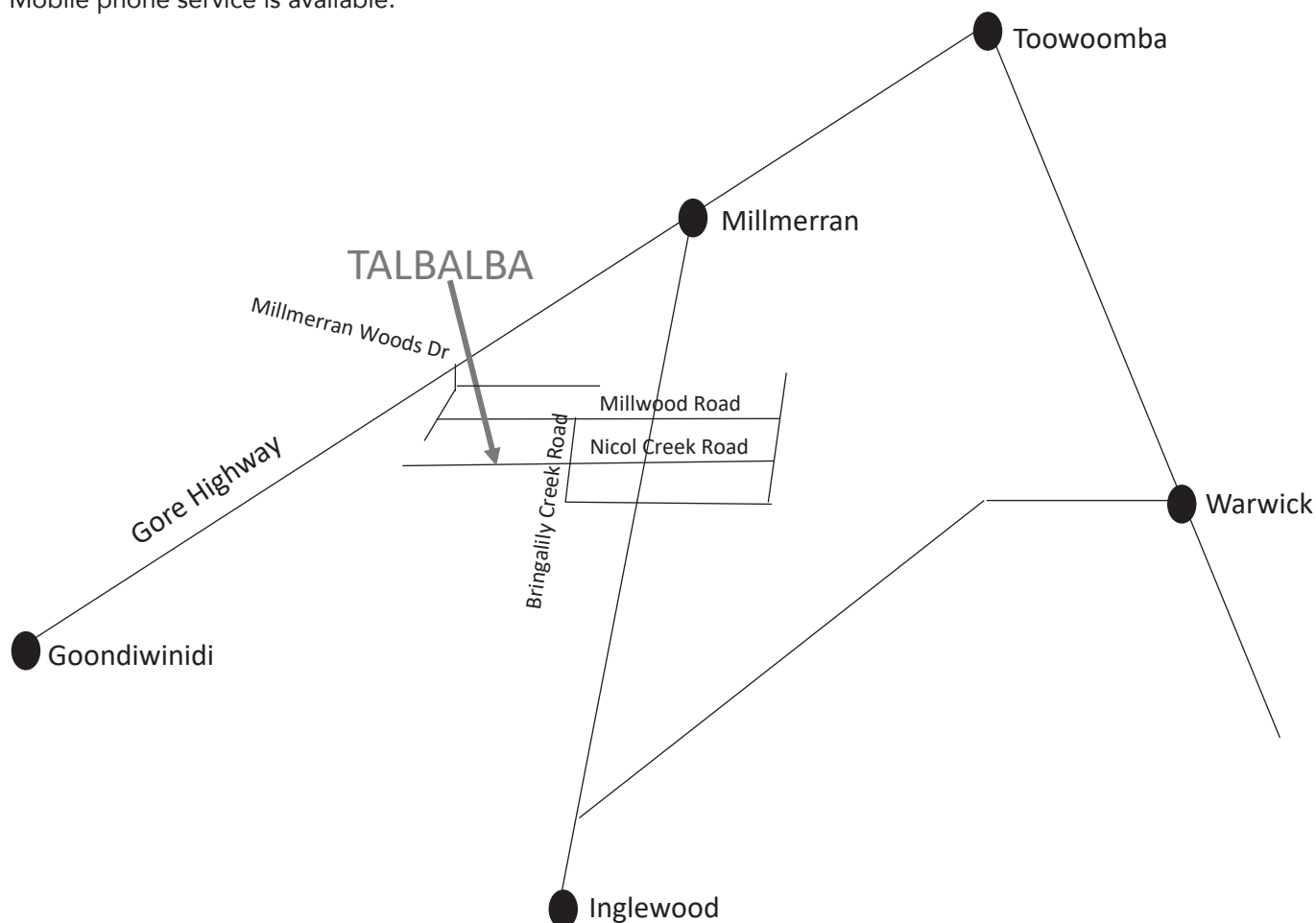
Directions: We are located at 1392 Nicol Creek Road, Bringalily, QLD.

From Millmerran head south towards Inglewood 25 km, turn right (West) at Nicol Ck Rd, continue 7km and Talbalba is on your right.

From Goondiwindi take Gore Highway head towards Millmerran 123 km, at Rifle Range turn right into Millmerran Woods Dr 1.5 km then left into Millwood Road 6.5 km, right into Bringalily Creek Rd 4 km, right into Nicol Ck Rd, 4 km and Talbalba is on your right.

Signs will be displayed on sale day.

Mobile phone service is available.



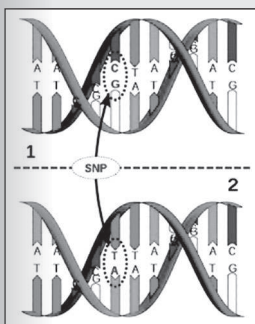
Inspection may be arranged prior to sale day by contacting the vendors or our agents. Visitors are always welcome. Inspection from 8am Sale day.

Delivery: Bulls will be delivered free to your door within 500km radius of "Delemere" or by prior arrangement with us. Please arrange Insurance for your purchase as all care will be taken but no responsibility.

Fertility: All bulls have been semen tested including Morphology by Brendan Coonan, Northern Artificial Breeding Service on 08/07/2022.

GENOMIC TESTING

All bulls have had DNA collected and a 100K, Low Density SNP produce by Neogen at Gatton.



This guarantees:

- Bulls with Genomics in traits observed (Breedplan) are sire verified and tested free of known genetic conditions.
- The accuracy of the EBVs will go to the next level with the addition of Genomic information.

Health: All bulls have been vaccinated for Tick fever Trivalent, 5 in 1, Pestivirus, B.E.F (3 day sickness) and Vibrio. We recommend purchasers continue these vaccination programs with a yearly booster. All bulls tested Pestivirus (P.I) negative by Neogen laboratory, University of Qld. No bulls have been hoof trimmed.

Vaccination / Treatment history	
5 in 1	2 doses 2021 and booster 13/03/2022
Vibrio	09/06/2022 and 18/07/2022
Pestigard	09/06/2022 and 18/07/2022
B.E.F (3 day sickness)	2 doses 2021 and booster 18/07/2022
Tick Fever Trivalent	14/08/2021
Cydetin backline drench	10/04/2022

Tick Fever note:

Lots 5, 11, 33, 43 and 58 treated with Imidox on 05/09/2022 for severe reaction to Tick fever vaccine so no longer immune.

Horn Status	
H	Horned Animal (All horned bulls have been dehorned)
H#	Horned animal with poll blood in first 6 generations
HPR	Herd Performance Recorded
P	Polled
S	Poll animal with scurs (scurs have not been touched and usually are insignificant)

Poll Test: The Australian Poll Gene Marker test is available from the Animal Genetics Laboratory at the University of Queensland and Zoetis Animal Genetics. Hair, blood, tissue or semen samples can all be used to perform the test.

The results will describe the percentage chance of the most likely genotype. The genotypes that are reported are homozygous polled (PP), heterozygous polled (PH), and homozygous horned (HH). The accuracy of the test result is reported alongside the most likely genotype. The accuracy will range from 90% to 99%. If the test does not return an informative result, the accuracy is less than 90%, the result will be returned as Not Determined (ND).

Homozygous Polled bulls will dehorn all of their progeny irrespective of the mother's horn status.

Heterozygous Polled bulls dehorn 75% to 100% of their progeny when used over Poll cows depending on the % of homozygous cows. They dehorn 50% of their progeny when used over Horned cows.

Handling your new bull: Our bulls are run in groups of about 20 in open paddocks and are not used to being on their own. While this does ensure that they can compete and perform in the paddock, it can make them nervous when they are transported individually. If your bull doesn't settle after acclimatising into a new mob please let us know.

Rebate: A rebate of 3% of the purchase price will be allowed to outside agents introducing buyers in writing 24 hours prior to the sale and settling on their behalf within 7 days from date of sale. Outside agents attending the sale in person with buyers will be eligible for a \$200 expenses reimbursement.

Insurance: Insurance representatives will be in attendance. Cover can be arranged from the fall of the hammer. There is no vendor insurance on Sale bulls.

GST is to be added onto the purchase price at the fall of the auctioneer's hammer.

Buyer's Instructions: All buyer's instructions must be in writing and no verbal instructions will be accepted. A buyer's instruction slip is included in the catalogue for your convenience.

Refreshments: Our local Kindon branch of ICPA, Isolated Children's Parents' Association, will be catering Morning Tea and Lunch at this year's sale as a fundraising event. On completion of the sale please join us for complimentary drinks.

Safety: All persons enter the bull pens at their own risk. Children under 14 to be accompanied by an adult and must not enter bull pens. Bulls are generally quiet to handle but Sale day is stressful and may cause unpredictable behaviour.

Disclaimer: Whilst all due care is taken the owners, employees, agents and sales staff accept no liability for any accidents that may occur to persons or property on Sale day.



AuctionsPlus

How to Register and Bid on AuctionsPlus

1

Go to **www.auctionsplus.com.au** to register at least 48 hours before the sale.

2

Select “**Sign Up**” in the top right hand corner.

3

Fill out your name, mobile number, email address and create a password.

4

Go to your emails and confirm the account.

5

Return to AuctionsPlus and log in.

6

Select “**Dashboard**” and then select “**Request Approval to Buy**”.

7

Fill in buyer details and once completed go back to Dashboard.

8

Complete buyer induction module (approx. 30 minutes).

9

AuctionsPlus will email you to let you know that your account has been approved.

10

Log in on sale day and connect to auction.

11

Bid using the two-step process – unlock the bid button and bid at that price.

12

If you are successful, the selling agent will contact you post sale to organise delivery and payment.

For more information please contact us on:

Phone: (02) 9262 4222

Email: info@auctionsplus.com.au

BREEDPLAN INFORMATION

Breedplan is a performance evaluation programme that describes the genetic merit of bulls for a number of commercially important traits. This genetic merit is given as an Estimated Breeding Value (EBV) for each trait. The EBVs in this catalogue are Hereford Group Breedplan EBVs and can be directly compared with Hereford Group Breedplan EBVs from other herds.

When comparing bulls, the EBV of each bull can be compared against the breed benchmark of zero (0), or against the current breed average EBV which are shown at the end of this entry.

Using EBVs to compare bulls:

CE DIR (%) – Calving ease direct EBV estimates the genetic difference in the ability of a sire's calf to be born unassisted from 2 yr old heifers. Higher, more positive calving ease direct EBV's are more favourable. Eg a bull with an EBV of +5.0% would be expected on average to produce 3% fewer difficult calvings from 2 yo heifers than a bull with -1.0% (6% difference between the sires then halved as the mother contributes the other half of the genetics).

CE DTRS (%) – Calving ease daughters EBV's are estimates of genetic differences in the ability of a sire's 2 yr old daughters to calve without assistance. Higher, more positive calving ease daughters EBV's are more favourable. For those with self replacing herds, selecting heifer bulls with above average CE DIR and CE DTRS is especially important, both for reducing calving problems in the current heifers and those in the future.

Gestation Length (Days) – Gestation length EBV's provide an estimate of genetic differences between animals in gestation length, and are expressed in days. Lower or more negative Gestation Length EBBV's are considered to be more favourable. Calves which have a shorter gestation length are generally smaller (lower birth weight) and thus the dam is able to deliver her calf with less difficulty. Note too short GL (small premature calves) may not survive.

Birth wt EBV – the lower the birthweight EBV, the lighter is the birthweight potential of the progeny.

200 day wt – indicates the relative weight advantage of a sire's progeny at 8-10 months of age.

400 day wt – indicates the relative weight advantage of a sire's progeny at yearling age. This EBV is important if selecting sires for the domestic/supermarket trade.

600 day wt – indicates the relative weight advantage of a sire's progeny beyond yearling age. This EBV is important if selecting sires to breed steers for the grainfed export markets.

Mature cow weight EBV (kg) – is based on the cow weight when the calf is weighed for weaning, adjusted to 5 yrs of age. This EBV is an estimate of the genetic difference in cow weight at 5 yrs of age and is an indicator of growth at later ages and potential feed maintenance requirements of the females in the breeding herd.

Milk EBV – reflects extra calf weight at weaning due to the genetic influence a sire has on his daughters milking and mothering ability.

Scrotal Size – bulls with positive (+) EBVs are expected to produce male progeny that are relatively more fertile and to produce female progeny that reach puberty earlier than will the progeny of negative (-) EBV bulls.

Days to Calving EBV (days) – are estimates of genetic differences between animals in the time from the start of the joining period (i.e. when the female is introduced to a bull) until subsequent calving. A negative EBV for days to calving indicates a shorter interval from bull in date to calving and therefore higher fertility.

Carcase weight (kg) – is based on abattoir carcass records and is an indicator of the genetic differences in carcass weight at 650 days.

EMA – bulls with positive (+) EBVs are expected to produce progeny with larger eye muscle area than progeny with negative (-) EBVs.

Fat Depth – bulls with negative (-) EBVs are expected to produce progeny that will be relatively leaner than will bulls with a positive (+) EBV.

Carcass Yield (RBY%) – bulls with positive EBVs for RBY% can be expected to produce progeny that are higher yielding @ 300kg HSCW than progeny from negative sires. Selection for this trait needs to be balanced with other growth and fertility traits.

Intra-muscular fat % (IMF%) – selection of bulls positive for IMF will improve marbling performance of their progeny. For a significant increase in marbling score, above average IMF sires need to be joined to above average IMF females.

Selection Indexes – Selection Indexes indicate the possible extra dollars earned per cow joined in self replacing herds targeting a particular market.

Northern Self-Replacing Index – Estimates the genetic differences between animals in net profitability per cow joined in a commercial self replacing herd targeting the domestic market.

This index is suitable for use by both straight bred Hereford herds and in cross breeding herds where Hereford bulls are being used over a Bos Indicus cow herd.

Daughters are retained for breeding.

Northern Baldy Terminal Index – Estimates the genetic difference between animals in net profitability per cow joined in a commercial crossbred herd using Hereford bulls over Bos Indicus females where all progeny are slaughtered.

AVERAGE EBVs FOR 2020 BORN HEREFORD CALVES (HEREFORD GROUP BREEDPLAN)																
Calving Ease DIR (%)	Calving Ease DTRS (%)	Gestation Length (days)	Birth Wt. (kg)	200 Day Wt (kg)	400 Day Wt (kg)	600 Day Wt (kg)	Mat Cow Wt (kg)	Milk (kg)	Scrotal Size (cm)	Days to Calving (days)	Carcase Wt (kg)	Eye Muscle Area (sq cm)	Rib Fat (mm)	Rump Fat (mm)	Retail Beef Yield (%)	IMF (%)
+2.5	+2.1	-0.7	+4.0	+33	+55	+77	+66	+17	+2.1	-3.0	+51	+3.8	+0.8	+1.0	+0.8	+0.6
\$Index values:			Southern Self-Replacing Index: +\$132				Northern Self-Replacing Index: +\$119				Southern Baldy Maternal Index: +\$134			Northern Baldy Terminal Index: +\$99		



H47 at 11 years, dam of Lot 1, with heifer calf by Allendale Gambler

Reference Sires



Koanui Techno 3062 (PP) (IMP NZ)

High growth NZ sire who excels in carcase, fertility and maternal traits. Trait leader for 200, 400, 600 day growth, milk, scrotal and marbling



Ravensdale Guardian M222 (P)

\$32,000 sire owned with Calloway. Extra sound sire who excels in growth and carcase traits. Trait leader 200, 400, 600 day wts and scrotal.



Talbalba The Hoff M035 (P)

Outstanding Victor son standing at Nowley. High calving ease sire who adds carcase and length. Top 1% muscle and yield.



Tarcombe Fort N093 (P)

Senior Champion Bull Wodonga 2019. Easy doing sire with sound structure.



Kanimbla Regulator M025 (PP)

Moderate growth, high calving ease sire who adds muscle shape and doing ability.



Talbalba Executive P022 (P)

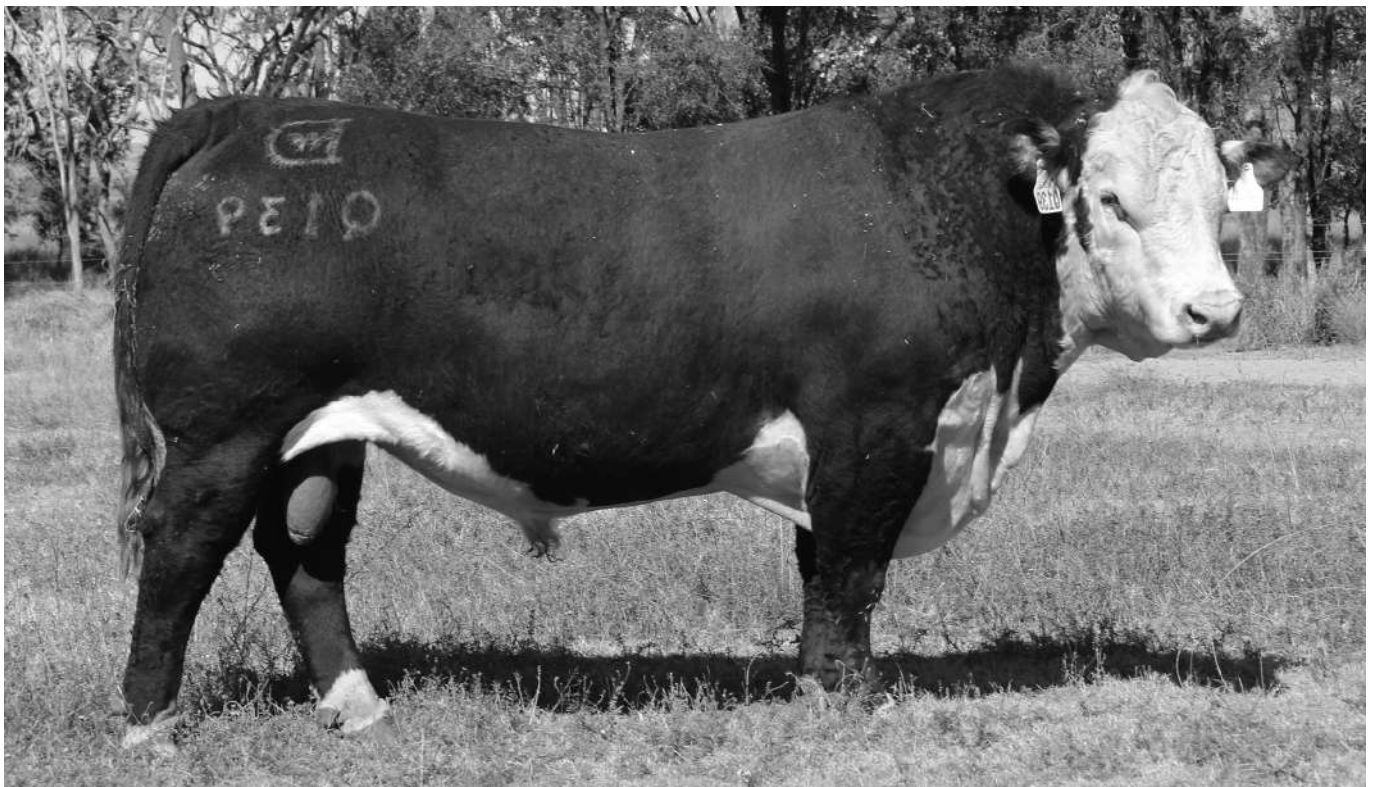
Carcase sire who sold to Currackabark Stud. He adds muscle, marbling and yield while improving fertility, growth and calving ease of daughters.

Future Sires



Colyer Guardian 1015 ET (P)

We are excited to add CGKB Guardian 1015 from the United States to our A.I sire battery. Guardian brings the power, performance, phenotype and carcass merit unmatched in the Hereford breed. 38kg birthweight and with no creep weighing 598kg at exactly 10 months. Dam is a full sister to Belle Heir. GKB Cattle recently purchased a ¼ share in this young sire for \$290,000.



Days Kingswood Q139 (PP)

Top price at Days Whiteface 2021 sale, purchased for \$40,000. A very muscular, correct structured bull that definitely exhibits his top 1% EMA figure. Kingswood has an outstanding well balanced data set with good phenotype.

Lot 1**TALBALBA TECHNO R036 (AI) (S)****Tattoo: R036****Born: 16/08/2020****Rego No.: R5XR036**

KOANUI UNANIMOUS 7174 (P)
 KOANUI UNANIMOUS 0408 (P)
 KOANUI GIRLIE 3048 (P)
SIRE: KOANUI TECHNO 3062 (IMP NZL) (PP)
 LEELANDS X-TENSION 293 (P)
 KOANUI BLUSH 6455 (P)
 KOANUI BLUSH 3304 (P)

SOUTH BUKALONG WALKER 6 (AI) (P)
 SOUTH BUKALONG WALLACE 2 (P)
 SOUTH BUKALONG VICTORIA 152 (P)
DAM: TALBALBA CHOICE H47 (AI) (H#)
 FOXFORTH VALUABLE (H)
 TALBALBA CHOICE F019 (AI) (H)
 TALBALBA CHOICE 113 (H)



Heterozygous Poll. Deep bodied, thick hind quartered bull with a good skin, head and outlook. Outstanding data set combining calving ease, growth, fertility and carcase strength. Used as a yearling over select cows. Mother is a picture perfect cow.

May 2022 Hereford BREEDPLAN

CEDir	CEDtrs	GL	BW	200	400	600	MCW	MILK	SS	DC	C WT	EMA	RIB	RUMP	RBY %	IMF %
+3.3	+3.7	-1.1	+6.6	+47	+77	+110	+101	+29	+4.1	-4.8	+71	+4.0	+0.7	+0.9	+0.9	+1.1
56%	51%	76%	74%	71%	71%	71%	68%	66%	70%	50%	66%	59%	63%	66%	59%	64%
\$Index values:		Southern Self-Replacing Index: +\$180				Northern Self-Replacing Index: +\$157				Southern Baldy Maternal Index: +\$187			Northern Baldy Terminal Index: +\$141			

Traits Observed: GL,CE,BWT,200WT,Genomics

Purchaser: _____ Price: \$ _____

Lot 2**TALBALBA TECHNO R035 (AI) (P)****Tattoo: R035****Born: 16/08/2020****Rego No.: R5XR035**

KOANUI UNANIMOUS 7174 (P)
 KOANUI UNANIMOUS 0408 (P)
 KOANUI GIRLIE 3048 (P)
SIRE: KOANUI TECHNO 3062 (IMP NZL) (PP)
 LEELANDS X-TENSION 293 (P)
 KOANUI BLUSH 6455 (P)
 KOANUI BLUSH 3304 (P)

KESWICK DEVIATE X177 (AI) (P)
 KESWICK DEVO A093 (P)
 KESWICK FAVOURITE P99 (P)
DAM: TALBALBA IRISH ROSE G101 (P)
 KESWICK DEVIATE X177 (AI) (P)
 KESWICK IRISH ROSE D091 (P)
 KESWICK IRISH ROSE Y084 (P)



Heterozygous Poll. High calving ease Techno that we used over heifers. He has a lot of growth, excellent structure and solid carcase data. His mother always has low birth weight calves.

May 2022 Hereford BREEDPLAN

CEDir	CEDtrs	GL	BW	200	400	600	MCW	MILK	SS	DC	C WT	EMA	RIB	RUMP	RBY %	IMF %
+4.8	+2.2	-1.1	+4.1	+35	+63	+90	+90	+23	+3.1	-4.6	+60	+3.7	+0.5	+0.4	+0.7	+1.0
53%	47%	75%	74%	71%	71%	72%	67%	65%	78%	46%	65%	56%	62%	65%	57%	63%
\$Index values:		Southern Self-Replacing Index: +\$150				Northern Self-Replacing Index: +\$132				Southern Baldy Maternal Index: +\$160			Northern Baldy Terminal Index: +\$126			

Traits Observed: GL,CE,BWT,200WT,400WT,SS,FAT,EMA,IMF,Genomics

Purchaser: _____ Price: \$ _____

Lot 3**TALBALBA TECHNO R071 (AI) (P)**

Tattoo: R071

Born: 01/09/2020

Rego No.: R5XR071

KOANUI UNANIMOUS 7174 (P)
 KOANUI UNANIMOUS 0408 (P)
 KOANUI GIRLIE 3048 (P)
SIRE: KOANUI TECHNO 3062 (IMP NZL) (PP)
 LEELANDS X-TENSION 293 (P)
 KOANUI BLUSH 6455 (P)
 KOANUI BLUSH 3304 (P)

CAPETHORNE HOT SHOT 03 22 (P)
 MATARIKI HOLY - SMOKE (IMP NZL) (P)
 MATARIKI GIRLIE 00323 (P)
DAM: KENROY PRINCESS DIANA L16 (AI) (P)
 BOBANKEN SOUTHERN CROSS S48 (P)
 KENROY PRINCESS DIANA (AI) (P)
 MARKOWEN DIANA C8 (AI) (P)



Heterozygous Poll. High growth bull with a lot of weight for age and a particularly good doer. Terrific carcase exhibiting muscle, marbling and positive fats. Mother is one of our heaviest cows.

May 2022 Hereford BREEDPLAN

CEDir	CEDtrs	GL	BW	200	400	600	MCW	MILK	SS	DC	C WT	EMA	RIB	RUMP	RBY %	IMF %
-3.4	-1.8	+0.7	+5.0	+35	+70	+97	+87	+21	+2.9	-4.5	+66	+4.7	+2.4	+3.6	-0.2	+1.3
55%	50%	76%	73%	72%	72%	72%	68%	66%	78%	51%	66%	59%	64%	66%	59%	65%
\$Index values:		Southern Self-Replacing Index: +\$149				Northern Self-Replacing Index: +\$133				Southern Baldy Maternal Index: +\$137			Northern Baldy Terminal Index: +\$101			

Traits Observed: GL,CE,BWT,200WT,400WT,SS,FAT,EMA,IMF,Genomics

Purchaser: _____ Price: \$ _____

Lot 4**TALBALBA TECHNO R051 (AI) (PP)**

Tattoo: R051

Born: 22/08/2020

Rego No.: R5XR051

KOANUI UNANIMOUS 7174 (P)
 KOANUI UNANIMOUS 0408 (P)
 KOANUI GIRLIE 3048 (P)
SIRE: KOANUI TECHNO 3062 (IMP NZL) (PP)
 LEELANDS X-TENSION 293 (P)
 KOANUI BLUSH 6455 (P)
 KOANUI BLUSH 3304 (P)

SOUTH BUKALONG WALLACE 2 (P)
 WIRRUNA FORT F382 (ET) (PP)
 MOUNT DIFFICULT LORNA B123 (P)
DAM: TALBALBA CHOICE K128 (AI) (P)
 BOWMONT STORM C115 (AI) (H)
 TALBALBA CHOICE H110 (H)
 TALBALBA CHOICE Z017 (H)



Homozygous Poll. High growth Techno son with excellent carcase data. Muscle, very high marbling and strongly positive fats.

May 2022 Hereford BREEDPLAN

CEDir	CEDtrs	GL	BW	200	400	600	MCW	MILK	SS	DC	C WT	EMA	RIB	RUMP	RBY %	IMF %
-1.8	-2.7	+1.8	+7.8	+36	+67	+100	+82	+19	+3.2	-5.4	+58	+4.4	+2.1	+3.1	+0.2	+1.7
54%	49%	75%	72%	69%	69%	70%	66%	63%	77%	48%	64%	57%	61%	64%	57%	63%
\$Index values:		Southern Self-Replacing Index: +\$170				Northern Self-Replacing Index: +\$149				Southern Baldy Maternal Index: +\$155			Northern Baldy Terminal Index: +\$110			

Traits Observed: GL,CE,BWT,200WT,400WT,SS,FAT,EMA,IMF,Genomics

Purchaser: _____ Price: \$ _____

Lot 5**TALBALBA TECHNO R029 (AI) (S)**

Tattoo: R029

Born: 13/08/2020

Rego No.: R5XR029

KOANUI UNANIMOUS 7174 (P)
 KOANUI UNANIMOUS 0408 (P)
 KOANUI GIRLIE 3048 (P)

SIRE: KOANUI TECHNO 3062 (IMP NZL) (PP)

LEELANDS X-TENSION 293 (P)
 KOANUI BLUSH 6455 (P)
 KOANUI BLUSH 3304 (P)

COOTHARABA ELGIN 2 (H)
 COOTHARABA MAGNUM (H)
 COOTHARABA PAULINE 279 (H)

DAM: TALBALBA CHOICE E110 (AI) (H)

FOXFORTH VALUABLE (H)
 TALBALBA CHOICE B069 (H)
 BUNDARRA CHOICE U111 (H)

Heterozygous Poll. Heavy weight Techno son from a great old Magnum daughter. He weighed 443 kgs at 8 mths of age off his 11 yo mother. He will increase weight and carcase quality without sacrificing calving ease.

May 2022 Hereford BREEDPLAN

CEDir	CEDtrs	GL	BW	200	400	600	MCW	MILK	SS	DC	C WT	EMA	RIB	RUMP	RBY %	IMF %
+0.1	+2.1	-3.1	+7.3	+48	+79	+110	+103	+25	+2.8	-2.7	+71	+4.2	-0.7	-1.4	+1.7	+1.0
56%	51%	75%	73%	71%	71%	72%	68%	66%	78%	49%	66%	59%	63%	66%	59%	64%
\$Index values:		Southern Self-Replacing Index: +\$165				Northern Self-Replacing Index: +\$139				Southern Baldy Maternal Index: +\$168			Northern Baldy Terminal Index: +\$128			

Traits Observed: GL,CE,BWT,200WT,400WT,SS,FAT,EMA,IMF,Genomics

Purchaser: _____ Price: \$ _____

Lot 6**TALBALBA TECHNO R031 (AI) (TW) (S)**

Tattoo: R031

Born: 14/08/2020

Rego No.: R5XR031

KOANUI UNANIMOUS 7174 (P)
 KOANUI UNANIMOUS 0408 (P)
 KOANUI GIRLIE 3048 (P)

SIRE: KOANUI TECHNO 3062 (IMP NZL) (PP)

LEELANDS X-TENSION 293 (P)
 KOANUI BLUSH 6455 (P)
 KOANUI BLUSH 3304 (P)

COWBOY OUTLAW ET (ET) (H)
 FOXFORTH VALUABLE (H)
 FOXFORTH CHIC 8 (H)

DAM: TALBALBA CHOICE F019 (AI) (H)

INJEMIRA EXTRA Q405 (H)
 TALBALBA CHOICE 113 (H)
 TALBALBA CHOICE 84 (H)



Heterozygous Poll. Thickset, muscular bull from a from a fertile old cow who has had 11 calves at 11 years of age including the mother of Lot 1. Good carcase bull.

May 2022 Hereford BREEDPLAN

CEDir	CEDtrs	GL	BW	200	400	600	MCW	MILK	SS	DC	C WT	EMA	RIB	RUMP	RBY %	IMF %
-3.3	-2.4	+0.2	+5.7	+32	+52	+74	+82	+21	+1.5	-2.8	+47	+4.3	+0.7	+0.7	+0.9	+0.7
55%	50%	69%	73%	71%	71%	72%	68%	66%	71%	48%	65%	58%	63%	66%	59%	64%
\$Index values:		Southern Self-Replacing Index: +\$88				Northern Self-Replacing Index: +\$71				Southern Baldy Maternal Index: +\$85			Northern Baldy Terminal Index: +\$71			

Traits Observed: BWT,200WT,400WT,SS,FAT,EMA,IMF,Genomics

Purchaser: _____ Price: \$ _____

Lot 7**TALBALBA TECHNO R055 (AI) (P)****Tattoo: R055****Born: 23/08/2020****Rego No.: R5XR055**

KOANUI UNANIMOUS 7174 (P)
 KOANUI UNANIMOUS 0408 (P)
 KOANUI GIRLIE 3048 (P)
SIRE: KOANUI TECHNO 3062 (IMP NZL) (PP)
 LEELANDS X-TENSION 293 (P)
 KOANUI BLUSH 6455 (P)
 KOANUI BLUSH 3304 (P)

MONREID P EXPRESS X001 ET1 (AI) (ET) (H)
 COOTHARABA MENDEZ (H)
 COOTHARABA SINCERITY 15 (H)
DAM: TALBALBA DOREEN H54 (H)
 BUNDARRA ZAY (H)
 JINDALEE DOREEN E020 (H)
 JINDALEE DOREEN A001 (H)



Heterozygous Poll. Long, thick bull offering growth, fertility and carcase.

May 2022 Hereford BREEDPLAN

CEDir	CEDtrs	GL	BW	200	400	600	MCW	MILK	SS	DC	C WT	EMA	RIB	RUMP	RBY %	IMF %
-3.2	-1.1	+2.0	+6.6	+44	+74	+100	+80	+20	+2.6	-4.2	+66	+4.1	+0.7	+0.8	+1.1	+0.9
53%	48%	75%	72%	71%	70%	72%	67%	65%	77%	46%	65%	57%	62%	65%	58%	63%
\$Index values:		Southern Self-Replacing Index: +\$162				Northern Self-Replacing Index: +\$141				Southern Baldy Maternal Index: +\$148			Northern Baldy Terminal Index: +\$103			

Traits Observed: GL,CE,200WT,400WT,SS,FAT,EMA,IMF,Genomics

Purchaser: _____ Price: \$ _____

Lot 8**TALBALBA TECHNO R093 (AI) (P)****Tattoo: R093****Born: 12/09/2020****Rego No.: R5XR093**

KOANUI UNANIMOUS 7174 (P)
 KOANUI UNANIMOUS 0408 (P)
 KOANUI GIRLIE 3048 (P)
SIRE: KOANUI TECHNO 3062 (IMP NZL) (PP)
 LEELANDS X-TENSION 293 (P)
 KOANUI BLUSH 6455 (P)
 KOANUI BLUSH 3304 (P)

ALLENDAL WATERHOUSE D1 (PP)
 DAYS EXECUTIVE K168 (PP)
 DAYS SILVIA G13 (AI) (P)
DAM: TALBALBA CHOICE N049 (P)
 NORTH END X061 (H)
 TALBALBA CHOICE F111 (H)
 TALBALBA CHOICE A082 (H)



Heterozygous poll. High growth bull with outstanding fertility and carcase data.

May 2022 Hereford BREEDPLAN

CEDir	CEDtrs	GL	BW	200	400	600	MCW	MILK	SS	DC	C WT	EMA	RIB	RUMP	RBY %	IMF %
-0.8	+2.3	-0.1	+7.0	+41	+70	+105	+94	+29	+4.7	-3.4	+65	+4.6	+0.4	+0.2	+1.2	+1.1
53%	48%	74%	73%	70%	70%	71%	67%	63%	77%	46%	64%	57%	62%	65%	58%	63%
\$Index values:		Southern Self-Replacing Index: +\$157				Northern Self-Replacing Index: +\$130				Southern Baldy Maternal Index: +\$158			Northern Baldy Terminal Index: +\$117			

Traits Observed: GL,CE,BWT,200WT,400WT,SS,FAT,EMA,IMF,Genomics

Purchaser: _____ Price: \$ _____

Lot 9**TALBALBA TECHNO R040 (AI) (S)**

Tattoo: R040

Born: 17/08/2020

Rego No.: R5XR040

KOANUI UNANIMOUS 7174 (P)

KOANUI UNANIMOUS 0408 (P)

KOANUI GIRLIE 3048 (P)

SIRE: KOANUI TECHNO 3062 (IMP NZL) (PP)

LEELANDS X-TENSION 293 (P)

KOANUI BLUSH 6455 (P)

KOANUI BLUSH 3304 (P)

SOUTH BUKALONG WALKER 6 (AI) (P)

SOUTH BUKALONG WALLACE 2 (P)

SOUTH BUKALONG VICTORIA 152 (P)

DAM: TALBALBA MINERVA G120 (AI) (H#)

MAWARRA TRAIL BLAZER (AI) (H)

TALBALBA MINERVA E077 (AI) (H)

BUNDARRA MINERVA R100 (H)

Heterozygous poll. Big, long bull with the best data set in the sale. Outstanding calving ease for such high growth, topped off with terrific fertility and carcase data. Half brother to M035 who features as a sire.

May 2022 Hereford BREEDPLAN

CEDir	CEDtrs	GL	BW	200	400	600	MCW	MILK	SS	DC	C WT	EMA	RIB	RUMP	RBY %	IMF %
+5.1	+5.9	-1.4	+6.5	+44	+75	+104	+73	+24	+5.2	-5.3	+70	+5.3	+0.3	-0.1	+2.1	+1.5
56%	51%	76%	74%	71%	71%	72%	68%	66%	78%	50%	66%	59%	63%	66%	59%	64%
\$Index values:		Southern Self-Replacing Index: +\$217				Northern Self-Replacing Index: +\$196				Southern Baldy Maternal Index: +\$218			Northern Baldy Terminal Index: +\$151			

Traits Observed: GL,CE,BWT,200WT,400WT,SS,FAT,EMA,IMF,Genomics

Purchaser: _____ Price: \$ _____

Lot 10**TALBALBA GUARDIAN R088 (P)**

Tattoo: R088

Born: 08/09/2020

Rego No.: R5XR088

ALLENDALE YACKA (AI) (P)

ALLENDALE ANZAC E114 (PP)

ALLENDALE DAWN B22 (AI) (ET) (P)

SIRE: RAVENSDALE GUARDIAN M222 (ET) (P)

YAMBRO CONRAD B88 (P)

MAWARRA TABITHA 005 (AI) (P)

DEBARRY TABITHA Y177 (P)

SOUTH BUKALONG WALKER 6 (AI) (P)

SOUTH BUKALONG WALLACE 2 (P)

SOUTH BUKALONG VICTORIA 152 (P)

DAM: TALBALBA CONSTANCE J036 (AI) (H#)

KJ 520E VICTOR 417L (IMP USA) (P)

TALBALBA CONSTANCE G110 (AI) (H#)

TALBALBA CONSTANCE E022 (H)



Heterozygous Poll. Long, correct Guardian son who will add to the functionality of your breeders while adding carcase quality with above average muscle and exceptional marbling. He has high calving ease and short gestation length with positive fats for increased fertility. R088 is a carrier for the genetic disorder Hypertrichosis, this may cause an issue if mated to Hereford cows carrying this gene.

May 2022 Hereford BREEDPLAN

CEDir	CEDtrs	GL	BW	200	400	600	MCW	MILK	SS	DC	C WT	EMA	RIB	RUMP	RBY %	IMF %
+4.8	+4.0	-2.9	+4.2	+37	+55	+82	+53	+15	+1.7	-2.3	+58	+4.3	+1.4	+1.6	+0.7	+1.6
45%	40%	61%	72%	68%	67%	68%	64%	58%	77%	41%	59%	51%	57%	61%	53%	58%
\$Index values:		Southern Self-Replacing Index: +\$170				Northern Self-Replacing Index: +\$159				Southern Baldy Maternal Index: +\$176			Northern Baldy Terminal Index: +\$124			

Traits Observed: CE,BWT,200WT,400WT,SS,FAT,EMA,IMF,Genomics

Purchaser: _____ Price: \$ _____

Lot 11**TALBALBA GUARDIAN R128 (PP)**

Tattoo: R128

Born: 26/09/2020

Rego No.: R5XR128

ALLENDALE YACKA (AI) (P)
 ALLENDALE ANZAC E114 (PP)
 ALLENDALE DAWN B22 (AI) (ET) (P)
SIRE: RAVENSDALE GUARDIAN M222 (ET) (P)
 YAMBRO CONRAD B88 (P)
 MAWARRA TABITHA 005 (AI) (P)
 DEBARRY TABITHA Y177 (P)

MATARIKI HOLY - SMOKE (IMP NZL) (P)
 WIRRUNA JUSTIN J13 (AI) (PP)
 WIRRUNA DOREEN G393 (P)
DAM: TALBALBA LIONESS M116 (AI) (P)
 TALBALBA MR MYSTERIOUS H106 (AI) (S)
 TALBALBA LIONESS K147 (H#)
 TALBALBA LIONESS C001 (H)



Homozygous Poll. Solid data set, above breed average for nearly every trait. He is a bit of a curve bender when it comes to mature cow weight. His progeny will be above breed average weight at 600 days, however his daughters will be below breed average weight cows for extra efficiency in the paddock. They should wean more kgs with less feed eaten.

May 2022 Hereford BREEDPLAN

CEDir	CEDtrs	GL	BW	200	400	600	MCW	MILK	SS	DC	C WT	EMA	RIB	RUMP	RBY %	IMF %
+2.0	+3.1	-2	+4.5	+42	+64	+84	+60	+16	+2.3	-2.2	+59	+4.4	+1.0	+1.7	+0.5	+0.7
44%	38%	60%	71%	66%	66%	66%	63%	57%	75%	39%	58%	50%	56%	59%	52%	57%
\$Index values:		Southern Self-Replacing Index: +\$152				Northern Self-Replacing Index: +\$141				Southern Baldy Maternal Index: +\$154			Northern Baldy Terminal Index: +\$108			

Traits Observed: CE,BWT,200WT,400WT,SS,FAT,EMA,IMF,Genomics

Purchaser: _____ Price: \$ _____

Lot 12**TALBALBA GUARDIAN R136 (P)**

Tattoo: R136

Born: 01/10/2020

Rego No.: R5XR136

ALLENDALE YACKA (AI) (P)
 ALLENDALE ANZAC E114 (PP)
 ALLENDALE DAWN B22 (AI) (ET) (P)
SIRE: RAVENSDALE GUARDIAN M222 (ET) (P)
 YAMBRO CONRAD B88 (P)
 MAWARRA TABITHA 005 (AI) (P)
 DEBARRY TABITHA Y177 (P)

COOTHARABA ELGIN 2 (H)
 COOTHARABA MAGNUM (H)
 COOTHARABA PAULINE 279 (H)
DAM: TALBALBA CHOICE F083 (AI) (H)
 FOXFORTH VALUABLE (H)
 TALBALBA CHOICE B045 (H)
 BUNDARRA CHOICE U37 (H)



Heterozygous Poll. Soft, thick bull from one of those cows that you hate to see go. She had 10 calves at 11 years of age and all of them near the top of their drop.

May 2022 Hereford BREEDPLAN

CEDir	CEDtrs	GL	BW	200	400	600	MCW	MILK	SS	DC	C WT	EMA	RIB	RUMP	RBY %	IMF %
-0.3	+2.2	+1.1	+6.1	+38	+65	+88	+73	+11	+3.2	-1.8	+58	+5.9	+0.1	+0.3	+1.7	+0.8
46%	41%	61%	72%	68%	68%	68%	64%	60%	76%	41%	60%	52%	58%	61%	54%	59%
\$Index values:		Southern Self-Replacing Index: +\$154				Northern Self-Replacing Index: +\$144				Southern Baldy Maternal Index: +\$150			Northern Baldy Terminal Index: +\$106			

Traits Observed: CE,BWT,200WT,400WT,SS,FAT,EMA,IMF,Genomics

Purchaser: _____ Price: \$ _____

Lot 13**TALBALBA GUARDIAN R096 (P)**

Tattoo: R096

Born: 13/09/2020

Rego No.: R5XR096

ALLENDALE YACKA (AI) (P)
 ALLENDALE ANZAC E114 (PP)
 ALLENDALE DAWN B22 (AI) (ET) (P)
SIRE: RAVENSDALE GUARDIAN M222 (ET) (P)
 YAMBRO CONRAD B88 (P)
 MAWARRA TABITHA 005 (AI) (P)
 DEBARRY TABITHA Y177 (P)

COORA GOVERNOR U051 (AI) (H)
 NORTH END X061 (H)
 GVPC DOREEN R035 (H)
DAM: TALBALBA LIONESS F066 (H)
 FOXFORTH VALUABLE (H)
 TALBALBA LIONESS C069 (H)
 BUNDARRA LIONESS Y22 (H)

Heterozygous Poll. Low birth weight, short gestation length bull from another good old cow who has had 10 calves at 11 years of age including Wallace H83, is once again pregnant and sound as a bell. Strong marbling data.

May 2022 Hereford BREEDPLAN

CEDir	CEDtrs	GL	BW	200	400	600	MCW	MILK	SS	DC	C WT	EMA	RIB	RUMP	RBY %	IMF %
+2.3	+2.5	-1.6	+3.3	+23	+43	+65	+51	+18	+3.3	-2.7	+37	+3.3	+0.6	+0.8	+0.2	+1.2
46%	39%	60%	72%	68%	68%	68%	64%	60%	77%	40%	60%	51%	57%	61%	54%	58%
\$Index values:		Southern Self-Replacing Index: +\$116				Northern Self-Replacing Index: +\$100				Southern Baldy Maternal Index: +\$120				Northern Baldy Terminal Index: +\$87		

Traits Observed: CE,BWT,200WT,400WT,SS,FAT,EMA,IMF,Genomics

Purchaser: _____ Price: \$ _____

Lot 14**TALBALBA GUARDIAN R112 (P)**

Tattoo: R112

Born: 18/09/2020

Rego No.: R5XR112

ALLENDALE YACKA (AI) (P)
 ALLENDALE ANZAC E114 (PP)
 ALLENDALE DAWN B22 (AI) (ET) (P)
SIRE: RAVENSDALE GUARDIAN M222 (ET) (P)
 YAMBRO CONRAD B88 (P)
 MAWARRA TABITHA 005 (AI) (P)
 DEBARRY TABITHA Y177 (P)

MATARIKI HOLY - SMOKE (IMP NZL) (P)
 WIRRUNA JUSTIN J13 (AI) (PP)
 WIRRUNA DOREEN G393 (P)
DAM: TALBALBA CHOICE M131 (AI) (P)
 YAVENVALE FUNCTIONAL F273 (S)
 TALBALBA CHOICE K84 (H#)
 TALBALBA CHOICE F083 (AI) (H)

Heterozygous poll.

May 2022 Hereford BREEDPLAN

CEDir	CEDtrs	GL	BW	200	400	600	MCW	MILK	SS	DC	C WT	EMA	RIB	RUMP	RBY %	IMF %
-4.1	+2.3	-1	+7.7	+42	+70	+104	+99	+15	+2.8	-2	+63	+3.9	-0.5	-1	+1.8	+0.3
45%	39%	60%	72%	67%	67%	67%	63%	58%	76%	40%	58%	50%	56%	60%	52%	57%
\$Index values:		Southern Self-Replacing Index: +\$146				Northern Self-Replacing Index: +\$123				Southern Baldy Maternal Index: +\$138				Northern Baldy Terminal Index: +\$96		

Traits Observed: CE,BWT,200WT,400WT,SS,FAT,EMA,IMF,Genomics

Purchaser: _____ Price: \$ _____

Lot 15**TALBALBA THE HOFF R041 (AI) (P)****Tattoo: R041****Born: 17/08/2020****Rego No.: R5XR041**

TH 122 71I VICTOR 719T (IMP USA) (P)
 H VICTOR 0136 (IMP USA) (P)
 H LADY EXCELL 824 ET (P)

SIRE: TALBALBA THE HOFF M035 (AI) (P)

SOUTH BUKALONG WALLACE 2 (P)
 TALBALBA MINERVA G120 (AI) (H#)
 TALBALBA MINERVA E077 (AI) (H)

SOUTH BUKALONG WALLACE 2 (P)
 GLENTREVOR WALLACE H427 (AI) (PP)
 GLENTREVOR MARITANA F240 (P)

DAM: TALBALBA CHOICE L165 (AI) (P)

TH 71U 719T MR HEREFORD 11X (IMP USA) (P)
 TALBALBA CHOICE G078 (AI) (H#)
 TALBALBA CHOICE G077 (AI) (H)

Heterozygous Poll. Very low birth weight bull with exceptional muscle pattern. Very low mature cow weight for those wanting to limit their cow size. Excellent fertility data.

May 2022 Hereford BREEDPLAN

CEDir	CEDtrs	GL	BW	200	400	600	MCW	MILK	SS	DC	C WT	EMA	RIB	RUMP	RBY %	IMF %
+9.1	+6.5	-2.1	+1.2	+31	+54	+66	+18	+19	+3.9	-4.9	+50	+4.5	+1.3	+1.8	+1.2	+0.2
43%	34%	75%	73%	69%	68%	69%	64%	58%	77%	37%	60%	50%	57%	61%	53%	58%
\$Index values:		Southern Self-Replacing Index: +\$183				Northern Self-Replacing Index: +\$177				Southern Baldy Maternal Index: +\$189			Northern Baldy Terminal Index: +\$123			

Traits Observed: GL,CE,BWT,200WT,400WT,SS,FAT,EMA,IMF,Genomics

Purchaser: _____ Price: \$ _____

Lot 16**TALBALBA CHISEL R016 (AI) (PP)****Tattoo: R016****Born: 06/08/2020****Rego No.: R5XR016**

ALLENDAL YALLARO 2 (AI) (TW) (PP)
 ALLENDALE CHISEL G161 (P)
 ALLENDALE CORA D47 (AI) (P)

SIRE: ALLENDALE ANZAC M009 (ET) (PP)

ALLENDAL NATIONAL W168 (PP)
 ALLENDALE DAWN B22 (AI) (ET) (P)
 ALLENDALE DAWN T60 (AI) (P)

ALLENDAL WATERHOUSE D1 (PP)
 DAYS EXECUTIVE K168 (PP)
 DAYS SILVIA G13 (AI) (P)

DAM: TALBALBA MOONBEAM P007 (AI) (P)

TALBALBA WALLACE G091 (AI) (P)
 TALBALBA MOONBEAM J188 (P)
 TALBALBA MOONBEAM G126 (AI) (H#)



Homozygous Poll. Low birth weight bull with terrific fertility data. Short GL which gives the opportunity to cycle sooner, big scrotal for early age of puberty and short DC for a quicker rebreed. High marbling bull.

May 2022 Hereford BREEDPLAN

CEDir	CEDtrs	GL	BW	200	400	600	MCW	MILK	SS	DC	C WT	EMA	RIB	RUMP	RBY %	IMF %
+2.5	+5.9	-3.3	+3.2	+34	+56	+68	+63	+14	+5.0	-5	+45	+3.4	+0.5	+0.8	-0.3	+1.5
46%	38%	75%	72%	69%	68%	69%	65%	57%	77%	37%	60%	51%	57%	61%	53%	58%
\$Index values:		Southern Self-Replacing Index: +\$132				Northern Self-Replacing Index: +\$123				Southern Baldy Maternal Index: +\$130			Northern Baldy Terminal Index: +\$95			

Traits Observed: GL,CE,BWT,200WT,400WT,SS,FAT,EMA,IMF,Genomics

Purchaser: _____ Price: \$ _____

Lot 17**TALBALBA CHISEL R009 (AI) (PP)**

Tattoo: R009

Born: 01/08/2020

Rego No.: R5XR009

ALLENDAL YALLAROI 2 (AI) (TW) (PP)
 ALLENDAL CHISEL G161 (P)
 ALLENDAL CORA D47 (AI) (P)
SIRE: ALLENDAL ANZAC M009 (ET) (PP)
 ALLENDAL NATIONAL W168 (PP)
 ALLENDAL DAWN B22 (AI) (ET) (P)
 ALLENDAL DAWN T60 (AI) (P)

ALLENDAL WATERHOUSE D1 (PP)
 DAYS EXECUTIVE K168 (PP)
 DAYS SILVIA G13 (AI) (P)
DAM: TALBALBA CHOICE P091 (P)
 TALBALBA WALLACE G091 (AI) (P)
 TALBALBA G091 WALLACE J117 (H#)
 TALBALBA CHOICE G115 (H)

Homozygous Poll. High marbling bull.

May 2022 Hereford BREEDPLAN

CEDir	CEDtrs	GL	BW	200	400	600	MCW	MILK	SS	DC	C WT	EMA	RIB	RUMP	RBY %	IMF %
-4.4	+1.3	-2.3	+4.1	+35	+53	+68	+63	+14	+3.3	-2.4	+42	+2.7	+0.1	+0.3	-0.2	+1.4
47%	38%	73%	71%	67%	67%	68%	63%	56%	65%	36%	59%	49%	55%	59%	52%	57%
\$Index values:		Southern Self-Replacing Index: +\$94				Northern Self-Replacing Index: +\$80				Southern Baldy Maternal Index: +\$84			Northern Baldy Terminal Index: +\$62			

Traits Observed: GL,CE,BWT,200WT,Genomics

Purchaser: _____ Price: \$ _____

Lot 18**TALBALBA CHISEL R007 (AI) (PP)**

Tattoo: R007

Born: 31/07/2020

Rego No.: R5XR007

ALLENDAL YALLAROI 2 (AI) (TW) (PP)
 ALLENDAL CHISEL G161 (P)
 ALLENDAL CORA D47 (AI) (P)
SIRE: ALLENDAL ANZAC M009 (ET) (PP)
 ALLENDAL NATIONAL W168 (PP)
 ALLENDAL DAWN B22 (AI) (ET) (P)
 ALLENDAL DAWN T60 (AI) (P)

DAYS ELABORATE J59 (AI) (P)
 DAYS GALLIPOLI L142 (PP)
 DAYS FANCY J76 (AI) (P)
DAM: TALBALBA MONICA P071 (P)
 MAWARRA BLACK HEART (H)
 TALBALBA MONICA L040 (H)
 TALBALBA BEXLEY (H)

Homozygous Poll.

May 2022 Hereford BREEDPLAN

CEDir	CEDtrs	GL	BW	200	400	600	MCW	MILK	SS	DC	C WT	EMA	RIB	RUMP	RBY %	IMF %
-5.9	-0.1	-0.9	+5.1	+36	+59	+73	+77	+5	+3.1	-3.6	+47	+3.5	+0.7	+1.5	-0.5	+0.9
46%	35%	73%	72%	68%	67%	68%	64%	55%	66%	36%	60%	50%	56%	60%	52%	58%
\$Index values:		Southern Self-Replacing Index: +\$99				Northern Self-Replacing Index: +\$91				Southern Baldy Maternal Index: +\$80			Northern Baldy Terminal Index: +\$57			

Traits Observed: GL,CE,BWT,200WT,600WT,SS,FAT,EMA,IMF,Genomics

Purchaser: _____ Price: \$ _____

Lot 19**TALBALBA CHISEL R002 (AI) (PP)****Tattoo: R002****Born: 18/07/2020****Rego No.: R5XR002**

ALLENDAL YALLAROI 2 (AI) (TW) (PP)
 ALLENDAL CHISEL G161 (P)
 ALLENDAL CORA D47 (AI) (P)
SIRE: ALLENDAL ANZAC M009 (ET) (PP)
 ALLENDAL NATIONAL W168 (PP)
 ALLENDAL DAWN B22 (AI) (ET) (P)
 ALLENDAL DAWN T60 (AI) (P)

HARVIE HIGH ROLLER ET 66X (IMP CAN) (AI) (ET) (P)
 OAK DOWNS LAWLOIT L75 (AI) (PP)
 OAK DOWNS RUBY F165 (P)
DAM: TALBALBA TALBALBA IRISH ROSE (AI) (P)
 KESWICK DEVO A093 (P)
 TALBALBA IRISH ROSE G101 (P)
 KESWICK IRISH ROSE D091 (P)



Homozygous Poll. Very high growth bull with outstanding calving ease and extremely short gestation length. He weighed 421 kg at 9 mths on a 2 yo mother.

May 2022 Hereford BREEDPLAN

CEDir	CEDtrs	GL	BW	200	400	600	MCW	MILK	SS	DC	C WT	EMA	RIB	RUMP	RBY %	IMF %
+3.9	+3.7	-7.2	+5.2	+44	+64	+86	+100	+12	+3.0	-1.6	+60	+2.9	-0.5	-0.7	+0.7	+0.4
45%	34%	74%	71%	67%	66%	67%	62%	54%	76%	34%	57%	49%	54%	58%	51%	56%
\$Index values:		Southern Self-Replacing Index: +\$121				Northern Self-Replacing Index: +\$111				Southern Baldy Maternal Index: +\$136			Northern Baldy Terminal Index: +\$112			

Traits Observed: GL,CE,BWT,200WT,400WT,SS,FAT,EMA,IMF,Genomics

Purchaser: _____ Price: \$ _____

Lot 20**TALBALBA TECHNO R130 (AI) (S)****Tattoo: R130****Born: 28/09/2020****Rego No.: R5XR130**

KOANUI UNANIMOUS 7174 (P)
 KOANUI UNANIMOUS 0408 (P)
 KOANUI GIRLIE 3048 (P)
SIRE: KOANUI TECHNO 3062 (IMP NZL) (PP)
 LEELANDS X-TENSION 293 (P)
 KOANUI BLUSH 6455 (P)
 KOANUI BLUSH 3304 (P)

INJEMIRA ADVANCE C085 (H)
 DEVON COURT ADVANCE F052 (H)
 DEVON COURT LIONESS A207 (H)
DAM: TALBALBA MINERVA K18 (H)
 BUNDARRA WALLY (H)
 TALBALBA MINERVA B174 (H)
 BUNDARRA MINERVA W14 (AI) (H)



Heterozygous Poll, however his scurs were more like horns, so we dehorned him. Deep, thick, easy doing bull from one of our best Advance cows. Exceptional carcase, lots of muscle, high marbling with fat cover.

May 2022 Hereford BREEDPLAN

CEDir	CEDtrs	GL	BW	200	400	600	MCW	MILK	SS	DC	C WT	EMA	RIB	RUMP	RBY %	IMF %
-0.6	+0.1	+1.0	+5.5	+33	+66	+93	+89	+23	+4.1	-4.6	+60	+4.9	+1.3	+2.0	+0.5	+1.4
53%	48%	74%	72%	70%	70%	71%	67%	64%	78%	47%	64%	57%	62%	65%	58%	63%
\$Index values:		Southern Self-Replacing Index: +\$147				Northern Self-Replacing Index: +\$128				Southern Baldy Maternal Index: +\$143			Northern Baldy Terminal Index: +\$109			

Traits Observed: GL,CE,BWT,200WT,400WT,SS,FAT,EMA,IMF,Genomics

Purchaser: _____ Price: \$ _____

Lot 21**TALBALBA EXECUTIVE R125 (H#)****Tattoo: R125****Born: 24/09/2020****Rego No.: R5XR125**

ALLENDALDE WATERHOUSE D1 (PP)
 DAYS EXECUTIVE K168 (PP)
 DAYS SILVIA G13 (AI) (P)
SIRE: TALBALBA EXECUTIVE P022 (AI) (P)
 SOUTH BUKALONG WALLACE 2 (P)
 TALBALBA CHOICE H47 (AI) (H#)
 TALBALBA CHOICE F019 (AI) (H)

MATARIKI HOLY - SMOKE (IMP NZL) (P)
 WIRRUNA JUSTIN J13 (AI) (PP)
 WIRRUNA DOREEN G393 (P)
DAM: TALBALBA MINERVA M104 (AI) (P)
 DEVON COURT ADVANCE F052 (H)
 TALBALBA MINERVA K18 (H)
 TALBALBA MINERVA B174 (H)



Horned bull. Thick, deep bull with a great skin and well set eyes. Same cow line as the last bull and you can see his carcass comes as much from that cow line as his sire. Good data set with top of the drop EMA.

May 2022 Hereford BREEDPLAN

CEDir	CEDtrs	GL	BW	200	400	600	MCW	MILK	SS	DC	C WT	EMA	RIB	RUMP	RBY %	IMF %
-1.9	+3.1	-2.9	+5.5	+39	+62	+90	+77	+23	+2.6	-3	+64	+7.9	+0.4	+0.7	+2.7	+0.4
42%	34%	62%	70%	65%	65%	66%	61%	55%	75%	37%	57%	48%	55%	59%	50%	56%
\$Index values:		Southern Self-Replacing Index: +\$152				Northern Self-Replacing Index: +\$140				Southern Baldy Maternal Index: +\$147			Northern Baldy Terminal Index: +\$105			

Traits Observed: CE,BWT,200WT,400WT,SS,FAT,EMA,IMF,Genomics

Purchaser: _____ Price: \$ _____

Lot 22**TALBALBA HOFFMAN R102 (H#)****Tattoo: R102****Born: 14/09/2020****Rego No.: R5XR102**

TH 122 711 VICTOR 719T (IMP USA) (P)
 H VICTOR 0136 (IMP USA) (P)
 H LADY EXCELL 824 ET (P)
SIRE: TALBALBA THE HOFF P059 (AI) (P)
 MAWARRA TRAIL BLAZER (AI) (H)
 TALBALBA MONICA E038 (AI) (H)
 TALBALBA MONICA A033 (H)

SOUTH BUKALONG WALLACE 2 (P)
 TALBALBA WALLACE H83 (AI) (S)
 TALBALBA LIONESS F066 (H)
DAM: TALBALBA CHOICE N364 (P)
 YARRAM STAR GENERAL W251 (H)
 TALBALBA CHOICE H30 (AI) (H)
 TALBALBA CHOICE E018 (AI) (H)



Horned bull. Thick, muscular bull with a good skin. Robust sort of bull that always takes my eye.

May 2022 Hereford BREEDPLAN

CEDir	CEDtrs	GL	BW	200	400	600	MCW	MILK	SS	DC	C WT	EMA	RIB	RUMP	RBY %	IMF %
-3.9	+0.8	+0.5	+8.3	+44	+74	+107	+97	+14	+3.8	-2.8	+59	+3.4	-1.6	-2.4	+2.7	-0.4
37%	29%	59%	70%	65%	64%	65%	60%	53%	76%	33%	56%	47%	53%	57%	49%	54%
\$Index values:		Southern Self-Replacing Index: +\$158				Northern Self-Replacing Index: +\$133				Southern Baldy Maternal Index: +\$145			Northern Baldy Terminal Index: +\$99			

Traits Observed: CE,BWT,200WT,400WT,SS,FAT,EMA,IMF,Genomics

Purchaser: _____ Price: \$ _____

Lot 23**TALBALBA FORT R178 (H#)**

Tattoo: R178

Born: 26/10/2020

Rego No.: R5XR178

SOUTH BUKALONG WALLACE 2 (P)
 WIRRUNA FORT F382 (ET) (PP)
 MOUNT DIFFICULT LORNA B123 (P)
SIRE: TARCOMBE FORT N093 (S)
 MAWARRA WEST WING (AI) (H)
 TARCOMBE VENUS J180 (H)
 TARCOMBE VENUS 18 (AI) (H)

TH 122 711 VICTOR 719T (IMP USA) (P)
 H VICTOR 0136 (IMP USA) (P)
 H LADY EXCELL 824 ET (P)
DAM: TALBALBA MISS HOFFETTE K60 (AI) (H#)
 KESWICK DEVIATE X177 (AI) (P)
 KESWICK IRISH ROSE D091 (P)
 KESWICK IRISH ROSE Y084 (P)



Horned bull. Very high performance bull with a bit more birth weight but still positive calving ease. He has a terrific carcass and a lot of style. Mother is a full sister to the high seller at our first on property sale. Not as quiet as some of the other bulls.

May 2022 Hereford BREEDPLAN

CEDir	CEDtrs	GL	BW	200	400	600	MCW	MILK	SS	DC	C WT	EMA	RIB	RUMP	RBY %	IMF %
+1.2	+0.7	-1.7	+8.5	+46	+80	+120	+117	+12	+3.6	-2.3	+72	+4.5	-1.4	-2.4	+3.2	-0.4
41%	32%	58%	69%	67%	66%	66%	61%	55%	74%	35%	57%	48%	54%	58%	50%	55%
\$Index values:		Southern Self-Replacing Index: +\$185				Northern Self-Replacing Index: +\$163				Southern Baldy Maternal Index: +\$186				Northern Baldy Terminal Index: +\$135		

Traits Observed: CE,200WT,400WT,SS,FAT,EMA,IMF,Genomics

Purchaser: _____ Price: \$ _____

Lot 24**TALBALBA EXECUTIVE R143 (H#)**

Tattoo: R143

Born: 02/10/2020

Rego No.: R5XR143

ALLENDAL WATERHOUSE D1 (PP)
 DAYS EXECUTIVE K168 (PP)
 DAYS SILVIA G13 (AI) (P)
SIRE: TALBALBA EXECUTIVE P022 (AI) (P)
 SOUTH BUKALONG WALLACE 2 (P)
 TALBALBA CHOICE H47 (AI) (H#)
 TALBALBA CHOICE F019 (AI) (H)

SOUTH BUKALONG WALLACE 2 (P)
 TALBALBA WALLACE H83 (AI) (S)
 TALBALBA LIONESS F066 (H)
DAM: TALBALBA MONICA N079 (P)
 TALBALBA VALUER (H)
 TALBALBA MONICA J028 (H)
 TALBALBA LENA C070 (H)



Horned bull. Soft bull who'll breed easy calving daughters. Use him to increase marbling.

May 2022 Hereford BREEDPLAN

CEDir	CEDtrs	GL	BW	200	400	600	MCW	MILK	SS	DC	C WT	EMA	RIB	RUMP	RBY %	IMF %
-2.1	+4.2	-0.1	+5.7	+33	+56	+82	+74	+16	+2.0	-2.3	+47	+3.0	+0.3	+0.5	+0.5	+1.2
40%	32%	62%	72%	67%	67%	68%	63%	56%	77%	36%	59%	49%	56%	61%	52%	57%
\$Index values:		Southern Self-Replacing Index: +\$126				Northern Self-Replacing Index: +\$106				Southern Baldy Maternal Index: +\$122				Northern Baldy Terminal Index: +\$85		

Traits Observed: CE,BWT,200WT,400WT,SS,FAT,EMA,IMF,Genomics

Purchaser: _____ Price: \$ _____

Lot 25**TALBALBA FORT R113 (H#)**

Tattoo: R113

Born: 19/09/2020

Rego No.: R5XR113

SOUTH BUKALONG WALLACE 2 (P)
 WIRRUNA FORT F382 (ET) (PP)
 MOUNT DIFFICULT LORNA B123 (P)
SIRE: TARCUMBE FORT N093 (S)
 MAWARRA WEST WING (AI) (H)
 TARCUMBE VENUS J180 (H)
 TARCUMBE VENUS 18 (AI) (H)

DEBARRY ROCKY C303 (P)
 YAVENVALE FUNCTIONAL F273 (S)
 YAVENVALE JULIET B136 (AI) (H)
DAM: TALBALBA MOONBEAM K161 (H#)
 SOUTH BUKALONG WALLACE 2 (P)
 TALBALBA MOONBEAM G126 (AI) (H#)
 TALBALBA MOONBEAM E088 (AI) (H)



Horned bull. Long, dark, slick skinned bull with very high calving ease. Short gestation length and above average growth.

May 2022 Hereford BREEDPLAN

CEDir	CEDtrs	GL	BW	200	400	600	MCW	MILK	SS	DC	C WT	EMA	RIB	RUMP	RBY %	IMF %
+6.1	+4.5	-4.3	+5.2	+31	+51	+81	+77	+16	+0.8	-3.2	+51	+3.4	+0.2	+0.1	+1.7	+0.0
43%	35%	56%	73%	68%	68%	68%	63%	58%	76%	38%	59%	50%	57%	61%	52%	58%
\$Index values:		Southern Self-Replacing Index: +\$146				Northern Self-Replacing Index: +\$131				Southern Baldy Maternal Index: +\$158			Northern Baldy Terminal Index: +\$116			

Traits Observed: CE,BWT,200WT,400WT,SS,FAT,EMA,IMF,Genomics

Purchaser: _____ Price: \$ _____

Lot 26**TALBALBA HOFFMAN R131 (PP)**

Tattoo: R131

Born: 28/09/2020

Rego No.: R5XR131

TH 122 711 VICTOR 719T (IMP USA) (P)
 H VICTOR 0136 (IMP USA) (P)
 H LADY EXCELL 824 ET (P)
SIRE: TALBALBA THE HOFF M035 (AI) (P)
 SOUTH BUKALONG WALLACE 2 (P)
 TALBALBA MINERVA G120 (AI) (H#)
 TALBALBA MINERVA E077 (AI) (H)

ALLENDAL WATERHOUSE D1 (PP)
 DAYS EXECUTIVE K168 (PP)
 DAYS SILVIA G13 (AI) (P)
DAM: TALBALBA ALMOND N018 (P)
 KOANUI ROCKET 0219 (IMP NZL) (P)
 KENROY ALMOND JOY (AI) (P)
 MARKOWEN ALMOND JOY E55 (P)



Homozygous Poll. Very thick, mobile bull who brings a lot of strengths to the table. Strong CE, short GL and low BW with above average growth. Big Sc and short DC for extra fertility. Big EMA and positive fats for a quality carcass.

Retained for stud duties at Talbalba.

May 2022 Hereford BREEDPLAN

CEDir	CEDtrs	GL	BW	200	400	600	MCW	MILK	SS	DC	C WT	EMA	RIB	RUMP	RBY %	IMF %
+4.5	+5.3	-2.8	+2.8	+36	+63	+88	+52	+22	+4.9	-4.2	+62	+5.6	+1.0	+1.5	+1.7	+0.6
41%	33%	64%	72%	68%	67%	68%	62%	55%	76%	36%	58%	49%	55%	59%	51%	56%
\$Index values:		Southern Self-Replacing Index: +\$191				Northern Self-Replacing Index: +\$181				Southern Baldy Maternal Index: +\$193			Northern Baldy Terminal Index: +\$130			

Traits Observed: CE,BWT,200WT,400WT,SS,FAT,EMA,IMF,Genomics

Purchaser: _____ Price: \$ _____

Lot 27**TALBALBA HOFFMAN R049 (AI) (P)**

Tattoo: R049

Born: 21/08/2020

Rego No.: R5XR049

TH 122 711 VICTOR 719T (IMP USA) (P)
 H VICTOR 0136 (IMP USA) (P)
 H LADY EXCELL 824 ET (P)

SIRE: TALBALBA THE HOFF M035 (AI) (P)

SOUTH BUKALONG WALLACE 2 (P)
 TALBALBA MINERVA G120 (AI) (H#)
 TALBALBA MINERVA E077 (AI) (H)

MOUNT DIFFICULT FELLIS Y12 (AI) (P)
 WIRRUNA ABERCORN (AI) (P)
 WIRRUNA GOLDEN VANITY R94 (AI) (P)

DAM: TALBALBA CHOICE G180 (AI) (TW) (P)

INJEMIRA EXTRA Q405 (H)
 TALBALBA CHOICE Z031 (H)
 TALBALBA CHOICE 32 (AI) (H)

Heterozygous Poll. Long bodied, high yielding bull with a strong top as indicated by his EMA of 5.7.

May 2022 Hereford BREEDPLAN

CEDir	CEDtrs	GL	BW	200	400	600	MCW	MILK	SS	DC	C WT	EMA	RIB	RUMP	RBY %	IMF %
+1.6	+2.5	-1.4	+3.7	+28	+56	+74	+54	+8	+1.7	-4	+50	+5.7	+0.1	+0.2	+2.1	+0.3
42%	35%	73%	72%	67%	66%	67%	61%	56%	76%	37%	58%	50%	55%	59%	51%	56%
\$Index values:		Southern Self-Replacing Index: +\$159				Northern Self-Replacing Index: +\$151				Southern Baldy Maternal Index: +\$150			Northern Baldy Terminal Index: +\$100			

Traits Observed: GL,CE,BWT,200WT,400WT,SS,FAT,EMA,IMF,Genomics

Purchaser: _____ Price: \$ _____

Lot 28**TALBALBA HOFFMAN R078 (TW) (P)**

Tattoo: R078

Born: 05/09/2020

Rego No.: R5XR078

TH 122 711 VICTOR 719T (IMP USA) (P)
 H VICTOR 0136 (IMP USA) (P)
 H LADY EXCELL 824 ET (P)

SIRE: TALBALBA THE HOFF M035 (AI) (P)

SOUTH BUKALONG WALLACE 2 (P)
 TALBALBA MINERVA G120 (AI) (H#)
 TALBALBA MINERVA E077 (AI) (H)

DEBARRY ROCKY C303 (P)
 YAVENVALE FUNCTIONAL F273 (S)
 YAVENVALE JULIET B136 (AI) (H)

DAM: TALBALBA RUTH J223 (P)

YALGOO DOMINO S71 (TW) (S)
 BELLCO RUTH A63 (P)
 BELLCO RUTH U125 (P)



Heterozygous Poll. Lovely quality bull who excels in CE, fertility and carcase.

May 2022 Hereford BREEDPLAN

CEDir	CEDtrs	GL	BW	200	400	600	MCW	MILK	SS	DC	C WT	EMA	RIB	RUMP	RBY %	IMF %
+4.6	+3.7	-2.1	+3.7	+33	+58	+77	+54	+18	+3.5	-4.3	+50	+4.1	+0.6	+0.8	+1.0	+0.7
39%	30%	55%	70%	65%	64%	63%	57%	51%	69%	31%	53%	45%	50%	54%	48%	50%
\$Index values:		Southern Self-Replacing Index: +\$159				Northern Self-Replacing Index: +\$145				Southern Baldy Maternal Index: +\$161			Northern Baldy Terminal Index: +\$112			

Traits Observed: BWT,200WT,400WT,SS,FAT,EMA,IMF

Purchaser: _____ Price: \$ _____

Lot 29**TALBALBA REGULATOR R060 (P)****Tattoo: R060****Born: 24/08/2020****Rego No.: R5XR060**

DAYS CALIBRE G74 (PP)
 DAYS CARBINE J141 (PP)
 ALLENDALE FANCY A270 (P)

SIRE: KANIMBLA REGULATOR M025 (AI) (PP)

TH 71U 719T MR HEREFORD 11X (IMP USA) (P)
 KANIMBLA MISS HEREFORD J025 (AI) (P)
 KANIMBLA ZENA G034 (P)

GLENWARRAH LISMORE MORE (H)
 MAWARRA BLACK HEART (H)
 MAWARRA DOREEN 300 (H)

DAM: TALBALBA CHOICE M145 (H)

COOTHARABA MAGNUM (H)
 TALBALBA CHOICE E110 (AI) (H)
 TALBALBA CHOICE B069 (H)

Heterozygous Poll. Thick, robust, high yielding sort of bull.

May 2022 Hereford BREEDPLAN

CEDir	CEDtrs	GL	BW	200	400	600	MCW	MILK	SS	DC	C WT	EMA	RIB	RUMP	RBY %	IMF %
-0.8	-0.6	+1.8	+8.5	+42	+66	+94	+88	+9	+1.6	-1.2	+52	+4.4	-0.5	-1	+1.8	-0.1
42%	34%	59%	68%	66%	66%	66%	62%	55%	75%	34%	57%	49%	55%	59%	51%	56%
\$Index values:		Southern Self-Replacing Index: +\$136				Northern Self-Replacing Index: +\$117				Southern Baldy Maternal Index: +\$134			Northern Baldy Terminal Index: +\$96			

Traits Observed: CE,200WT,400WT,SS,FAT,EMA,IMF,Genomics

Purchaser: _____ Price: \$ _____

Lot 30**TALBALBA HOFFMAN R142 (S)****Tattoo: R142****Born: 02/10/2020****Rego No.: R5XR142**

TH 122 71I VICTOR 719T (IMP USA) (P)
 H VICTOR 0136 (IMP USA) (P)
 H LADY EXCELL 824 ET (P)

SIRE: TALBALBA THE HOFF M035 (AI) (P)

SOUTH BUKALONG WALLACE 2 (P)
 TALBALBA MINERVA G120 (AI) (H#)
 TALBALBA MINERVA E077 (AI) (H)

YALGOO VICEROY E316 (ET) (PP)
 YALGOO JACOB J053 (PP)
 YALGOO MEAGAN F178 (AI) (P)

DAM: TALBALBA MINERVA M237 (P)

BUNDARRA WALLY (H)
 TALBALBA MINERVA B174 (H)
 BUNDARRA MINERVA W14 (AI) (H)

Heterozygous Poll. Really high yielding bull with outstanding muscle definition running down his spine. Low birth weight and high calving ease to top off the package.

May 2022 Hereford BREEDPLAN

CEDir	CEDtrs	GL	BW	200	400	600	MCW	MILK	SS	DC	C WT	EMA	RIB	RUMP	RBY %	IMF %
+4.3	+5.3	-2.6	+2.2	+32	+53	+69	+27	+21	+1.6	-2.2	+52	+4.9	-0.4	-0.5	+2.8	-0.6
39%	30%	61%	71%	65%	65%	65%	60%	52%	76%	33%	55%	47%	52%	56%	48%	53%
\$Index values:		Southern Self-Replacing Index: +\$158				Northern Self-Replacing Index: +\$148				Southern Baldy Maternal Index: +\$163			Northern Baldy Terminal Index: +\$105			

Traits Observed: CE,BWT,200WT,400WT,SS,FAT,EMA,IMF,Genomics

Purchaser: _____ Price: \$ _____

Lot 31**TALBALBA HOFFMAN R165 (PP)**

Tattoo: R165

Born: 19/10/2020

Rego No.: R5XR165

TH 122 711 VICTOR 719T (IMP USA) (P)
 H VICTOR 0136 (IMP USA) (P)
 H LADY EXCELL 824 ET (P)
SIRE: TALBALBA THE HOFF P059 (AI) (P)
 MAWARRA TRAIL BLAZER (AI) (H)
 TALBALBA MONICA E038 (AI) (H)
 TALBALBA MONICA A033 (H)

ALLENDALDE WATERHOUSE D1 (PP)
 DAYS EXECUTIVE K168 (PP)
 DAYS SILVIA G13 (AI) (P)
DAM: TALBALBA DIANA N001 (AI) (P)
 OKAWA COMMODORE 020076 (IMP NZL) (P)
 MARKOWEN DIANA C8 (AI) (P)
 ALANTON DIANA W8 (AI) (P)



Homozygous Poll. Bull who takes your eye out in the paddock for his structure and style.

May 2022 Hereford BREEDPLAN

CEDir	CEDtrs	GL	BW	200	400	600	MCW	MILK	SS	DC	C WT	EMA	RIB	RUMP	RBY %	IMF %
-1.7	+0.6	-2.9	+3.7	+33	+59	+79	+66	+18	+2.1	-2.2	+51	+4.0	-0.5	-0.7	+2.2	-0.7
39%	32%	62%	70%	65%	64%	65%	60%	53%	75%	34%	56%	47%	53%	56%	49%	53%
\$Index values:		Southern Self-Replacing Index: +\$122				Northern Self-Replacing Index: +\$107				Southern Baldy Maternal Index: +\$118				Northern Baldy Terminal Index: +\$82		

Traits Observed: CE,BWT,200WT,400WT,SS,FAT,EMA,IMF,Genomics

Purchaser: _____ Price: \$ _____

Lot 32**TALBALBA HOFFMAN R111 (P)**

Tattoo: R111

Born: 18/09/2020

Rego No.: R5XR111

TH 122 711 VICTOR 719T (IMP USA) (P)
 H VICTOR 0136 (IMP USA) (P)
 H LADY EXCELL 824 ET (P)
SIRE: TALBALBA THE HOFF M035 (AI) (P)
 SOUTH BUKALONG WALLACE 2 (P)
 TALBALBA MINERVA G120 (AI) (H#)
 TALBALBA MINERVA E077 (AI) (H)

ALLENDALDE ANZAC E114 (PP)
 INJEMIRA ANZAC AI J188 (AI) (PP)
 INJEMIRA PATTIE D119 (P)
DAM: TALBALBA LAST DAY M192 (P)
 YAVENVALE FUNCTIONAL F273 (S)
 TALBALBA LAST DAY J048 (P)
 EMU HOLES LAST DAY D523 (P)

Heterozygous Poll. Growthy bull with good fertility data, muscle and marbling.

May 2022 Hereford BREEDPLAN

CEDir	CEDtrs	GL	BW	200	400	600	MCW	MILK	SS	DC	C WT	EMA	RIB	RUMP	RBY %	IMF %
-2.8	+1.6	-1.1	+5.4	+39	+65	+86	+54	+20	+3.1	-4.5	+56	+4.5	+1.7	+2.3	+0.3	+1.1
39%	31%	61%	70%	66%	66%	66%	61%	54%	76%	34%	57%	48%	54%	58%	50%	56%
\$Index values:		Southern Self-Replacing Index: +\$159				Northern Self-Replacing Index: +\$142				Southern Baldy Maternal Index: +\$143				Northern Baldy Terminal Index: +\$92		

Traits Observed: CE,BWT,200WT,400WT,SS,FAT,EMA,IMF,Genomics

Purchaser: _____ Price: \$ _____

Lot 33**TALBALBA HOFFMAN R371 (S)****Tattoo: R371****Born: 03/11/2020****Rego No.: R5XR371**

TH 122 711 VICTOR 719T (IMP USA) (P)
 H VICTOR 0136 (IMP USA) (P)
 H LADY EXCELL 824 ET (P)

SIRE: TALBALBA THE HOFF M035 (AI) (P)
 SOUTH BUKALONG WALLACE 2 (P)
 TALBALBA MINERVA G120 (AI) (H#)
 TALBALBA MINERVA E077 (AI) (H)

GLENWARRAH LISMORE MORE (H)
 MAWARRA BLACK HEART (H)
 MAWARRA DOREEN 300 (H)

DAM: TALBALBA CHOICE M101 (H)
 COOTHARABA MAGNUM (H)
 TALBALBA CHOICE E017 (AI) (H)
 TALBALBA CHOICE 109 (H)



Heterozygous Poll. Growthy bull with good calving ease and short getation length. His big scrotal and short days to calving indicate he'll breed fertile daughters. On top of this he has a large EMA and retail beef yield.

May 2022 Hereford BREEDPLAN

CEDir	CEDtrs	GL	BW	200	400	600	MCW	MILK	SS	DC	C WT	EMA	RIB	RUMP	RBY %	IMF %
+1.3	+2.4	-3.7	+7.1	+45	+75	+102	+78	+14	+3.9	-3.6	+66	+6.1	-0.3	-0.5	+2.5	+0.1
40%	32%	62%	67%	66%	66%	66%	61%	54%	75%	34%	57%	49%	54%	58%	50%	55%
\$Index values:		Southern Self-Replacing Index: +\$190				Northern Self-Replacing Index: +\$175				Southern Baldy Maternal Index: +\$184			Northern Baldy Terminal Index: +\$125			

Traits Observed: CE,200WT,400WT,SS,FAT,EMA,IMF,Genomics

Purchaser: _____ Price: \$ _____

Lot 34**TALBALBA HOFFMAN R094 (P)****Tattoo: R094****Born: 12/09/2020****Rego No.: R5XR094**

TH 122 711 VICTOR 719T (IMP USA) (P)
 H VICTOR 0136 (IMP USA) (P)
 H LADY EXCELL 824 ET (P)

SIRE: TALBALBA THE HOFF M035 (AI) (P)
 SOUTH BUKALONG WALLACE 2 (P)
 TALBALBA MINERVA G120 (AI) (H#)
 TALBALBA MINERVA E077 (AI) (H)

GLENWARRAH LISMORE MORE (H)
 MAWARRA BLACK HEART (H)
 MAWARRA DOREEN 300 (H)

DAM: TALBALBA LIONESS M143 (H)
 NORTH END X061 (H)
 TALBALBA LIONESS E170 (H)
 BUNDARRA LIONESS Z81 (H)



Heterozygous Poll. Long, thick topped bull with growth. High yielding and sound structured.

May 2022 Hereford BREEDPLAN

CEDir	CEDtrs	GL	BW	200	400	600	MCW	MILK	SS	DC	C WT	EMA	RIB	RUMP	RBY %	IMF %
+0.6	+2.8	+0.9	+5.2	+35	+63	+91	+60	+15	+3.4	-3.1	+57	+5.3	-0.1	-0.3	+2.3	+0.4
40%	32%	62%	71%	66%	66%	66%	62%	55%	76%	34%	57%	49%	55%	59%	51%	56%
\$Index values:		Southern Self-Replacing Index: +\$178				Northern Self-Replacing Index: +\$162				Southern Baldy Maternal Index: +\$171			Northern Baldy Terminal Index: +\$112			

Traits Observed: CE,BWT,200WT,400WT,SS,FAT,EMA,IMF,Genomics

Purchaser: _____ Price: \$ _____

Lot 35**TALBALBA GUARDIAN R054 (S)**

Tattoo: R054

Born: 22/08/2020

Rego No.: R5XR054

ALLENDALDE YACKA (AI) (P)
 ALLENDALDE ANZAC E114 (PP)
 ALLENDALDE DAWN B22 (AI) (ET) (P)
SIRE: RAVENSDALE GUARDIAN M222 (ET) (P)
 YAMBRO CONRAD B88 (P)
 MAWARRA TABITHA 005 (AI) (P)
 DEBARRY TABITHA Y177 (P)

SOUTH BUKALONG WALLACE 2 (P)
 WIRRUNA FORT F382 (ET) (PP)
 MOUNT DIFFICULT LORNA B123 (P)
DAM: TALBALBA MINERVA K66 (AI) (P)
 TALBALBA ZEALOT (AI) (H)
 TALBALBA MINERVA H196 (H)
 TALBALBA MINERVA B174 (H)

Heterozygous Poll. Correct, well made bull with strong CE.

May 2022 Hereford BREEDPLAN

CEDir	CEDtrs	GL	BW	200	400	600	MCW	MILK	SS	DC	C WT	EMA	RIB	RUMP	RBY %	IMF %
+5.4	+3.7	+0.0	+3.7	+30	+54	+74	+67	+12	+3.2	-3.2	+48	+3.9	+0.3	+0.5	+1.2	+0.4
45%	39%	60%	72%	67%	66%	67%	63%	58%	76%	40%	58%	50%	55%	59%	52%	57%
\$Index values:		Southern Self-Replacing Index: +\$141				Northern Self-Replacing Index: +\$133				Southern Baldy Maternal Index: +\$150				Northern Baldy Terminal Index: +\$110		

Traits Observed: CE,BWT,200WT,400WT,SS,FAT,EMA,IMF,Genomics

Purchaser: _____ Price: \$ _____

Lot 36**TALBALBA HOFFMAN R169 (PP)**

Tattoo: R169

Born: 06/11/2020

Rego No.: R5XR169

TH 122 71I VICTOR 719T (IMP USA) (P)
 H VICTOR 0136 (IMP USA) (P)
 H LADY EXCELL 824 ET (P)
SIRE: TALBALBA THE HOFF P059 (AI) (P)
 MAWARRA TRAIL BLAZER (AI) (H)
 TALBALBA MONICA E038 (AI) (H)
 TALBALBA MONICA A033 (H)

ALLENDALDE WATERHOUSE D1 (PP)
 DAYS EXECUTIVE K168 (PP)
 DAYS SILVIA G13 (AI) (P)
DAM: TALBALBA LYDIA N013 (P)
 KOANUI ROCKET 0219 (IMP NZL) (P)
 MARKOWEN LYDIA E61 (AI) (P)
 MARKOWEN LYDIA B48 (P)

Homozygous Poll. Very high growth bull with plenty of muscle. Highest retail beef yield for his drop.

May 2022 Hereford BREEDPLAN

CEDir	CEDtrs	GL	BW	200	400	600	MCW	MILK	SS	DC	C WT	EMA	RIB	RUMP	RBY %	IMF %
+1.2	+1.6	-1.3	+6.9	+44	+74	+107	+97	+19	+3.5	-2.1	+69	+6.2	-1	-1.5	+3.3	-0.2
38%	31%	60%	67%	65%	65%	66%	60%	53%	74%	34%	56%	47%	53%	57%	49%	54%
\$Index values:		Southern Self-Replacing Index: +\$173				Northern Self-Replacing Index: +\$156				Southern Baldy Maternal Index: +\$177				Northern Baldy Terminal Index: +\$129		

Traits Observed: CE,200WT,400WT,SS,FAT,EMA,IMF,Genomics

Purchaser: _____ Price: \$ _____

Lot 37**TALBALBA REGULATOR R150 (S)****Tattoo: R150****Born: 06/10/2020****Rego No.: R5XR150**

DAYS CALIBRE G74 (PP)
 DAYS CARBINE J141 (PP)
 ALLENDALE FANCY A270 (P)

SIRE: KANIMBLA REGULATOR M025 (AI) (PP)

TH 71U 719T MR HEREFORD 11X (IMP USA) (P)
 KANIMBLA MISS HEREFORD J025 (AI) (P)
 KANIMBLA ZENA G034 (P)

GLENDAN PARK STORM W134 (H)
 BOWMONT STORM C115 (AI) (H)
 BOWMONT L MINERVA Y314 (H)

DAM: TALBALBA STORM J058 (H)

FOXFORTH VALUABLE (H)
 TALBALBA CHOICE E120 (AI) (H)
 BUNDARRA CHOICE Z69 (H)

Heterozygous Poll.

May 2022 Hereford BREEDPLAN

CEDir	CEDtrs	GL	BW	200	400	600	MCW	MILK	SS	DC	C WT	EMA	RIB	RUMP	RBY %	IMF %
+1.1	-3	+2.1	+6.4	+35	+56	+82	+88	+15	+3.4	-2.2	+41	+1.2	-1.1	-1.5	+0.9	-1
42%	35%	58%	68%	66%	66%	67%	61%	56%	75%	34%	57%	49%	54%	58%	51%	55%
\$Index values:		Southern Self-Replacing Index: +\$95				Northern Self-Replacing Index: +\$72				Southern Baldy Maternal Index: +\$100			Northern Baldy Terminal Index: +\$80			

Traits Observed: CE,200WT,400WT,SS,FAT,EMA,IMF,Genomics

Purchaser: _____ Price: \$ _____

Lot 38**TALBALBA GENESIS R015 (AI) (PP)****Tattoo: R015****Born: 06/08/2020****Rego No.: R5XR015**

HYALITE ON TARGET 936 (P)
 R LEADER 6964 (IMP USA) (PP)
 R MISS REVOLUTION 1009 (P)

SIRE: DAYS GENESIS N102 (AI) (PP)

DAYS BALTIMORE F82 (P)
 DAYS DAISY J44 (AI) (TW) (P)
 ALLENDALE DAISY C243 (P)

ALLENDALE WATERHOUSE D1 (PP)
 DAYS EXECUTIVE K168 (PP)
 DAYS SILVIA G13 (AI) (P)

DAM: TALBALBA CHERRY RIPE P068 (AI) (P)

WIRRUNA ABERCORN (AI) (P)
 TALBALBA CHERRY RIPE G158 (AI) (P)
 TALBALBA CHERRY RIPE 62 (H)

Homozygous Poll. Low birth weight bull that we used over heifers as a yearling. His mother is a consistent Executive cow who has another good bull for next year. Good carcase data with muscle, marbling and positive fats.

May 2022 Hereford BREEDPLAN

CEDir	CEDtrs	GL	BW	200	400	600	MCW	MILK	SS	DC	C WT	EMA	RIB	RUMP	RBY %	IMF %
+4.5	+3.7	+1.3	+1.3	+37	+54	+68	+47	+18	+1.6	-4.2	+48	+4.1	+2.0	+3.4	-0.6	+1.4
46%	35%	75%	71%	68%	68%	69%	63%	53%	70%	37%	62%	53%	59%	62%	53%	60%
\$Index values:		Southern Self-Replacing Index: +\$145				Northern Self-Replacing Index: +\$142				Southern Baldy Maternal Index: +\$149			Northern Baldy Terminal Index: +\$109			

Traits Observed: GL,CE,BWT,200WT,400WT,SS,FAT,EMA,IMF,Genomics

Purchaser: _____ Price: \$ _____

Lot 39**TALBALBA GENESIS R027 (AI) (P)**

Tattoo: R027

Born: 11/08/2020

Rego No.: R5XR027

HYALITE ON TARGET 936 (P)
 R LEADER 6964 (IMP USA) (PP)
 R MISS REVOLUTION 1009 (P)
SIRE: DAYS GENESIS N102 (AI) (PP)
 DAYS BALTIMORE F82 (P)
 DAYS DAISY J44 (AI) (TW) (P)
 ALLENDALE DAISY C243 (P)

DEVON COURT ADVANCE F052 (H)
 TALBALBA ADVANCE K246 (H)
 TALBALBA LENA G047 (AI) (H)
DAM: TALBALBA CHOICE P049 (AI) (H)
 FOXFORTH VALUABLE (H)
 TALBALBA CHOICE F019 (AI) (H)
 TALBALBA CHOICE 113 (H)



Heterozygous Poll. Low birth weight bull that we used over heifers as a yearling. Lots of muscle in this fellow.

May 2022 Hereford BREEDPLAN

CEDir	CEDtrs	GL	BW	200	400	600	MCW	MILK	SS	DC	C WT	EMA	RIB	RUMP	RBY %	IMF %
+4.4	+1.3	-0.4	+3.0	+37	+56	+76	+62	+18	-0.5	-0.7	+55	+6.0	+0.9	+1.4	+2.0	+0.1
44%	33%	75%	72%	68%	68%	69%	63%	53%	70%	36%	62%	52%	59%	62%	53%	60%
\$Index values:		Southern Self-Replacing Index: +\$136				Northern Self-Replacing Index: +\$134				Southern Baldy Maternal Index: +\$151			Northern Baldy Terminal Index: +\$116			

Traits Observed: GL,CE,BWT,200WT,400WT,SS,FAT,EMA,IMF,Genomics

Purchaser: _____ Price: \$ _____

Lot 40**TALBALBA LAWLOIT R085 (H#)**

Tattoo: R085

Born: 07/09/2020

Rego No.: R5XR085

HARVIE HIGH ROLLER ET 66X (IMP CAN) (AI) (ET) (P)
 OAK DOWNS LAWLOIT L75 (AI) (PP)
 OAK DOWNS RUBY F165 (P)
SIRE: TALBALBA LAWLOIT P014 (AI) (S)
 INJEMIRA ANZAC H006 (PP)
 TALBALBA MONICA L020 (AI) (P)
 TALBALBA MONICA G045 (H)

ALLENDALE WATERHOUSE D1 (PP)
 DAYS EXECUTIVE K168 (PP)
 DAYS SILVIA G13 (AI) (P)
DAM: TALBALBA MOONBEAM P217 (P)
 SOUTH BUKALONG WALLACE 2 (P)
 TALBALBA MOONBEAM G126 (AI) (H#)
 TALBALBA MOONBEAM E088 (AI) (H)



Horned bull. Long, growthy bull with good structure. Strong calving ease and very short gestation length to improve the efficiency of your cow herd.

May 2022 Hereford BREEDPLAN

CEDir	CEDtrs	GL	BW	200	400	600	MCW	MILK	SS	DC	C WT	EMA	RIB	RUMP	RBY %	IMF %
+5.2	+4.2	-5.4	+3.7	+32	+59	+83	+87	+22	+2.8	-2.8	+52	+3.9	-1.1	-1.5	+1.9	+0.0
38%	30%	60%	68%	64%	64%	64%	59%	52%	75%	32%	55%	46%	52%	56%	48%	53%
\$Index values:		Southern Self-Replacing Index: +\$132				Northern Self-Replacing Index: +\$114				Southern Baldy Maternal Index: +\$148			Northern Baldy Terminal Index: +\$116			

Traits Observed: CE,BWT,200WT,400WT,SS,FAT,EMA,IMF,Genomics

Purchaser: _____ Price: \$ _____

Lot 41**TALBALBA GUARDIAN R097 (S)**

Tattoo: R097

Born: 13/09/2020

Rego No.: R5XR097

ALLENDALE YACKA (AI) (P)
 ALLENDALE ANZAC E114 (PP)
 ALLENDALE DAWN B22 (AI) (ET) (P)
SIRE: RAVENSDALE GUARDIAN M222 (ET) (P)
 YAMBRO CONRAD B88 (P)
 MAWARRA TABITHA 005 (AI) (P)
 DEBARRY TABITHA Y177 (P)

GLENDAN PARK STORM W134 (H)
 BOWMONT STORM C115 (AI) (H)
 BOWMONT L MINERVA Y314 (H)
DAM: TALBALBA CHOICE F039 (H)
 TARCOMBE CAPTAIN (H)
 TALBALBA CHOICE 75 (AI) (H)
 TALBALBA CHOICE 32 (AI) (H)

Heterozygous Poll. Very high growth bull from a good old Storm cow who has weaned 10 calves by 11 years of age.

May 2022 Hereford BREEDPLAN

CEDir	CEDtrs	GL	BW	200	400	600	MCW	MILK	SS	DC	C WT	EMA	RIB	RUMP	RBY %	IMF %
+2.2	-1	-0.5	+5.8	+41	+73	+105	+98	+18	+2.1	-0.5	+67	+3.6	-0.4	-0.9	+1.4	+0.4
45%	40%	60%	73%	70%	69%	70%	65%	61%	77%	41%	61%	52%	58%	62%	55%	60%
\$Index values:		Southern Self-Replacing Index: +\$150				Northern Self-Replacing Index: +\$128				Southern Baldy Maternal Index: +\$162			Northern Baldy Terminal Index: +\$126			

Traits Observed: CE,BWT,200WT,400WT,SS,FAT,EMA,IMF,Genomics

Purchaser: _____ Price: \$ _____

Lot 42**TALBALBA GENESIS R014 (S)**

Tattoo: R014

Born: 04/08/2020

Rego No.:

SIRE: DAYS GENESIS N102 (AI) (PP)

DAM: Cow by DAYS EXECUTIVE K168



Unregistered Poll bull that we would have used over heifers if he'd been registered. Low birth weight bull (35kg) from an Executive heifer, R014 shows a very good muscle pattern and excellent structure.

CEDir	CEDtrs	GL	BW	200	400	600	MCW	MILK	SS	DC	C WT	EMA	RIB	RUMP	RBY %	IMF %
\$Index values:		Southern Self-Replacing Index:				Northern Self-Replacing Index:				Southern Baldy Maternal Index:			Northern Baldy Terminal Index:			

Traits Observed:

Purchaser: _____ Price: \$ _____

Lot 43**TALBALBA GENESIS R030 (AI) (P)**

Tattoo: R030

Born: 14/08/2020

Rego No.: R5XR030

HYALITE ON TARGET 936 (P)
 R LEADER 6964 (IMP USA) (PP)
 R MISS REVOLUTION 1009 (P)

SIRE: DAYS GENESIS N102 (AI) (PP)

DAYS BALTIMORE F82 (P)
 DAYS DAISY J44 (AI) (TW) (P)
 ALLENDALE DAISY C243 (P)

ALLENDALE WATERHOUSE D1 (PP)
 DAYS EXECUTIVE K168 (PP)
 DAYS SILVIA G13 (AI) (P)

DAM: TALBALBA CHOICE P147 (P)

GLENWARRAH LISMORE MORE (H)
 TALBALBA CHOICE G042 (H)
 TALBALBA CHOICE D091 (AI) (H)

Heterozygous Poll. Very low birth weight bull with good fertility and excellent carcase who should increase both muscularity and marbling. Good young Executive mother.

May 2022 Hereford BREEDPLAN

CEDir	CEDtrs	GL	BW	200	400	600	MCW	MILK	SS	DC	C WT	EMA	RIB	RUMP	RBY %	IMF %
+5.1	+3.4	-0.6	+1.8	+35	+54	+72	+48	+18	+2.6	-4.3	+52	+6.0	+2.7	+4.2	+0.0	+1.3
46%	35%	74%	72%	69%	69%	70%	64%	54%	77%	37%	63%	53%	60%	63%	54%	61%
\$Index values:		Southern Self-Replacing Index: +\$159				Northern Self-Replacing Index: +\$159				Southern Baldy Maternal Index: +\$163			Northern Baldy Terminal Index: +\$118			

Traits Observed: GL,CE,BWT,200WT,400WT,SS,FAT,EMA,IMF,Genomics

Purchaser: _____ Price: \$ _____

Lot 44**TALBALBA GENESIS R038 (AI) (PP)**

Tattoo: R038

Born: 16/08/2020

Rego No.: R5XR038

HYALITE ON TARGET 936 (P)
 R LEADER 6964 (IMP USA) (PP)
 R MISS REVOLUTION 1009 (P)

SIRE: DAYS GENESIS N102 (AI) (PP)

DAYS BALTIMORE F82 (P)
 DAYS DAISY J44 (AI) (TW) (P)
 ALLENDALE DAISY C243 (P)

ALLENDALE WATERHOUSE D1 (PP)
 DAYS EXECUTIVE K168 (PP)
 DAYS SILVIA G13 (AI) (P)

DAM: TALBALBA CHOICE P113 (P)

TALBALBA ZITHER (P)
 TALBALBA CHOICE H138 (P)
 TALBALBA CHOICE F111 (H)

Homozygous Poll. Low birth weight bull with above average growth. Very good carcase data again. His mother is a very hard working cow who bends the growth curve with low mature cow weight.

May 2022 Hereford BREEDPLAN

CEDir	CEDtrs	GL	BW	200	400	600	MCW	MILK	SS	DC	C WT	EMA	RIB	RUMP	RBY %	IMF %
+2.6	+2.9	-1.3	+3.1	+45	+60	+82	+45	+23	+1.3	-1.6	+57	+5.3	+1.1	+1.7	+1.2	+1.2
46%	35%	74%	72%	69%	69%	70%	64%	53%	77%	37%	62%	53%	60%	63%	54%	61%
\$Index values:		Southern Self-Replacing Index: +\$163				Northern Self-Replacing Index: +\$154				Southern Baldy Maternal Index: +\$169			Northern Baldy Terminal Index: +\$120			

Traits Observed: GL,CE,BWT,200WT,400WT,SS,FAT,EMA,IMF,Genomics

Purchaser: _____ Price: \$ _____

Lot 45**TALBALBA GENESIS R004 (AI) (S)**

Tattoo: R004

Born: 29/07/2020

Rego No.: R5XR004

HYALITE ON TARGET 936 (P)
 R LEADER 6964 (IMP USA) (PP)
 R MISS REVOLUTION 1009 (P)

SIRE: DAYS GENESIS N102 (AI) (PP)

DAYS BALTIMORE F82 (P)
 DAYS DAISY J44 (AI) (TW) (P)
 ALLENDALE DAISY C243 (P)

DAYS ELABORATE J59 (AI) (P)
 DAYS GALLIPOLI L142 (PP)
 DAYS FANCY J76 (AI) (P)

DAM: TALBALBA MONICA P062 (P)

BOWMONT STORM C115 (AI) (H)
 TALBALBA MONICA L201 (H)
 TALBALBA MONICA B172 (H)

Heterozygous Poll. Very low birth weight bull with exceptional CE. He's an earlier maturing type with length and thickness and one of our highest marbling EBVs.

May 2022 Hereford BREEDPLAN

CEDir	CEDtrs	GL	BW	200	400	600	MCW	MILK	SS	DC	C WT	EMA	RIB	RUMP	RBY %	IMF %
+6.7	+2.6	-1.2	+2.1	+36	+52	+71	+49	+17	+1.0	-3.6	+53	+5.9	+2.9	+4.5	-0.3	+2.0
45%	33%	74%	72%	68%	68%	69%	63%	52%	77%	37%	63%	54%	60%	63%	53%	61%
\$Index values:		Southern Self-Replacing Index: +\$159				Northern Self-Replacing Index: +\$159				Southern Baldy Maternal Index: +\$168			Northern Baldy Terminal Index: +\$127			

Traits Observed: GL,CE,BWT,200WT,400WT,SS,FAT,EMA,IMF,Genomics

Purchaser: _____ Price: \$ _____

Lot 46**TALBALBA GENESIS R021 (AI) (PP)**

Tattoo: R021

Born: 10/08/2020

Rego No.: R5XR021

HYALITE ON TARGET 936 (P)
 R LEADER 6964 (IMP USA) (PP)
 R MISS REVOLUTION 1009 (P)

SIRE: DAYS GENESIS N102 (AI) (PP)

DAYS BALTIMORE F82 (P)
 DAYS DAISY J44 (AI) (TW) (P)
 ALLENDALE DAISY C243 (P)

WIRRUNA FLETCHER F214 (P)
 WIRRUNA KELSO K23 (AI) (PP)
 WIRRUNA DOREEN G350 (P)

DAM: TALBALBA CHOICE P058 (P)

WIRRUNA JUSTIN J13 (AI) (PP)
 TALBALBA CHOICE M131 (AI) (P)
 TALBALBA CHOICE K84 (H#)

Homozygous Poll. Second highest indexing bull of the sale with this driven by his very high calving ease but he covers most bases. He has very short GL and DC to shorten breed back period and high muscle, marbling and fats for quality carcase production.

May 2022 Hereford BREEDPLAN

CEDir	CEDtrs	GL	BW	200	400	600	MCW	MILK	SS	DC	C WT	EMA	RIB	RUMP	RBY %	IMF %
+9.3	+6.5	-5.9	+1.8	+38	+58	+73	+42	+9	+0.9	-5.3	+55	+6.2	+3.4	+4.7	-0.2	+2.1
46%	34%	74%	72%	68%	68%	68%	63%	53%	76%	38%	61%	52%	58%	62%	52%	60%
\$Index values:		Southern Self-Replacing Index: +\$199				Northern Self-Replacing Index: +\$204				Southern Baldy Maternal Index: +\$204			Northern Baldy Terminal Index: +\$143			

Traits Observed: GL,CE,BWT,200WT,400WT,SS,FAT,EMA,IMF,Genomics

Purchaser: _____ Price: \$ _____

Lot 47**TALBALBA GENESIS R026 (AI) (PP)**

Tattoo: R026

Born: 11/08/2020

Rego No.: R5XR026

HYALITE ON TARGET 936 (P)
 R LEADER 6964 (IMP USA) (PP)
 R MISS REVOLUTION 1009 (P)

SIRE: DAYS GENESIS N102 (AI) (PP)

DAYS BALTIMORE F82 (P)
 DAYS DAISY J44 (AI) (TW) (P)
 ALLENDALE DAISY C243 (P)

ALLENDALE WATERHOUSE D1 (PP)
 DAYS EXECUTIVE K168 (PP)

DAM: TALBALBA MINERVA P031 (AI) (P)

DAYS SILVIA G13 (AI) (P)
 TALBALBA ZEALOT (AI) (H)
 TALBALBA MINERVA H196 (H)
 TALBALBA MINERVA B174 (H)

Homozygous Poll. Higher growth Genesis son who shortens GL and improves CE. His mother is one of the pick Executive daughters.

May 2022 Hereford BREEDPLAN

CEDir	CEDtrs	GL	BW	200	400	600	MCW	MILK	SS	DC	C WT	EMA	RIB	RUMP	RBY %	IMF %
+4.2	+4.2	-2.4	+3.2	+43	+66	+87	+67	+17	+0.4	-0.9	+58	+4.8	+0.8	+1.4	+1.1	+0.4
45%	34%	75%	72%	68%	68%	69%	63%	52%	77%	37%	62%	53%	59%	62%	53%	60%
\$Index values:		Southern Self-Replacing Index: +\$157				Northern Self-Replacing Index: +\$151				Southern Baldy Maternal Index: +\$170			Northern Baldy Terminal Index: +\$124			

Traits Observed: GL,CE,BWT,200WT,400WT,SS,FAT,EMA,IMF,Genomics

Purchaser: _____ Price: \$ _____

Lot 48**TALBALBA EXECUTIVE R105 (PP)**

Tattoo: R105

Born: 16/09/2020

Rego No.: R5XR105

ALLENDALE WATERHOUSE D1 (PP)
 DAYS EXECUTIVE K168 (PP)
 DAYS SILVIA G13 (AI) (P)

SIRE: TALBALBA EXECUTIVE P022 (AI) (P)

SOUTH BUKALONG WALLACE 2 (P)
 TALBALBA CHOICE H47 (AI) (H#)
 TALBALBA CHOICE F019 (AI) (H)

MATARIKI HOLY - SMOKE (IMP NZL) (P)
 WIRRUNA JUSTIN J13 (AI) (PP)
 WIRRUNA DOREEN G393 (P)

DAM: TALBALBA M118 (AI) (P)

YAVENVALE FUNCTIONAL F273 (S)
 TALBALBA MONICA K109 (H#)
 TALBALBA MONICA D061 (H)



Homozygous Poll. Long, thick bull with good structure.

May 2022 Hereford BREEDPLAN

CEDir	CEDtrs	GL	BW	200	400	600	MCW	MILK	SS	DC	C WT	EMA	RIB	RUMP	RBY %	IMF %
+3.0	+5.3	-3.3	+4.2	+38	+64	+87	+85	+18	+1.5	-2.1	+57	+3.8	+0.3	+0.7	+0.6	+0.5
42%	34%	62%	71%	65%	65%	66%	61%	55%	75%	37%	57%	48%	54%	58%	50%	55%
\$Index values:		Southern Self-Replacing Index: +\$138				Northern Self-Replacing Index: +\$125				Southern Baldy Maternal Index: +\$149			Northern Baldy Terminal Index: +\$112			

Traits Observed: CE,BWT,200WT,400WT,SS,FAT,EMA,IMF,Genomics

Purchaser: _____ Price: \$ _____

Lot 49**TALBALBA EXECUTIVE R152 (PP)**

Tattoo: R152

Born: 07/10/2020

Rego No.: R5XR152

ALLENDALDE WATERHOUSE D1 (PP)
 DAYS EXECUTIVE K168 (PP)
 DAYS SILVIA G13 (AI) (P)

SIRE: TALBALBA EXECUTIVE P022 (AI) (P)
 SOUTH BUKALONG WALLACE 2 (P)
 TALBALBA CHOICE H47 (AI) (H#)
 TALBALBA CHOICE F019 (AI) (H)

YALGOO VICEROY E316 (ET) (PP)
 YALGOO JACOB J053 (PP)
 YALGOO MEAGAN F178 (AI) (P)

DAM: TALBALBA CHOICE N048 (P)
 TALBALBA VAMPIRE (H)
 TALBALBA CHOICE G009 (H)
 TALBALBA CHOICE A025 (AI) (H)

Homozygous Poll. Exceptional muscling in this bull with top of the sale EMA at 8.3, one of the highest we've ever bred. His mother has another very good bull for next year.

May 2022 Hereford BREEDPLAN

CEDir	CEDtrs	GL	BW	200	400	600	MCW	MILK	SS	DC	C WT	EMA	RIB	RUMP	RBY %	IMF %
-6.2	+1.9	-0.8	+7.5	+40	+58	+91	+77	+22	+2.1	-1.9	+59	+8.3	+0.3	+0.7	+3.1	+0.5
39%	31%	57%	70%	64%	63%	65%	59%	52%	75%	32%	54%	46%	52%	56%	47%	52%
\$Index values:		Southern Self-Replacing Index: +\$138				Northern Self-Replacing Index: +\$124				Southern Baldy Maternal Index: +\$126			Northern Baldy Terminal Index: +\$87			

Traits Observed: CE,BWT,200WT,400WT,SS,FAT,EMA,IMF,Genomics

Purchaser: _____ Price: \$ _____

Lot 50**TALBALBA REGULATOR R047 (P)**

Tattoo: R047

Born: 20/08/2020

Rego No.: R5XR047

DAYS CALIBRE G74 (PP)
 DAYS CARBINE J141 (PP)
 ALLENDALDE FANCY A270 (P)
SIRE: KANIMBLA REGULATOR M025 (AI) (PP)
 TH 71U 719T MR HEREFORD 11X (IMP USA) (P)
 KANIMBLA MISS HEREFORD J025 (AI) (P)
 KANIMBLA ZENA G034 (P)

ALLENDALDE WATERHOUSE D1 (PP)
 DAYS EXECUTIVE K168 (PP)
 DAYS SILVIA G13 (AI) (P)

DAM: TALBALBA MINERVA N043 (P)
 SOUTH BUKALONG WALLACE 2 (P)
 TALBALBA MINERVA G066 (AI) (P)
 TALBALBA MINERVA E069 (AI) (H)



Heterozygous Poll. Thick, easy doing bull from a top cow. He's an earlier maturing type who'll breed easy care cattle that should marble.

May 2022 Hereford BREEDPLAN

CEDir	CEDtrs	GL	BW	200	400	600	MCW	MILK	SS	DC	C WT	EMA	RIB	RUMP	RBY %	IMF %
+1.6	+2.6	-1	+4.1	+32	+52	+72	+48	+18	+2.8	-2.1	+38	+1.7	+0.9	+1.3	-0.7	+1.1
43%	35%	61%	72%	67%	67%	68%	63%	56%	77%	36%	58%	50%	56%	60%	52%	57%
\$Index values:		Southern Self-Replacing Index: +\$122				Northern Self-Replacing Index: +\$103				Southern Baldy Maternal Index: +\$125			Northern Baldy Terminal Index: +\$87			

Traits Observed: CE,BWT,200WT,400WT,SS,FAT,EMA,IMF,Genomics

Purchaser: _____ Price: \$ _____

Lot 51**TALBALBA EXECUTIVE R095 (P)****Tattoo: R095****Born: 13/09/2020****Rego No.: R5XR095**

ALLENDALDE WATERHOUSE D1 (PP)
 DAYS EXECUTIVE K168 (PP)
 DAYS SILVIA G13 (AI) (P)

SIRE: TALBALBA EXECUTIVE P022 (AI) (P)
 SOUTH BUKALONG WALLACE 2 (P)
 TALBALBA CHOICE H47 (AI) (H#)
 TALBALBA CHOICE F019 (AI) (H)

TH 122 711 VICTOR 719T (IMP USA) (P)
 H VICTOR 0136 (IMP USA) (P)

DAM: TALBALBA CHOICE M032 (AI) (P)
 NORTH END X061 (H)
 TALBALBA CHOICE F111 (H)
 TALBALBA CHOICE A082 (H)



Heterozygous Poll. Very easy doing, earlier maturing type bull who you could use over heifers while improving carcass quality.

May 2022 Hereford BREEDPLAN

CEDir	CEDtrs	GL	BW	200	400	600	MCW	MILK	SS	DC	C WT	EMA	RIB	RUMP	RBY %	IMF %
+5.3	+4.6	+0.2	+1.3	+25	+43	+59	+38	+19	+1.9	-2.6	+41	+4.5	+1.2	+1.7	+0.8	+1.1
40%	32%	61%	71%	65%	65%	65%	60%	54%	76%	34%	56%	48%	54%	58%	50%	54%
\$Index values:		Southern Self-Replacing Index: +\$132				Northern Self-Replacing Index: +\$126				Southern Baldy Maternal Index: +\$141			Northern Baldy Terminal Index: +\$103			

Traits Observed: CE,BWT,200WT,400WT,SS,FAT,EMA,IMF,Genomics

Purchaser: _____ Price: \$ _____

Lot 52**TALBALBA FORT R089 (H#)****Tattoo: R089****Born: 10/09/2020****Rego No.: R5XR089**

SOUTH BUKALONG WALLACE 2 (P)
 WIRRUNA FORT F382 (ET) (PP)
 MOUNT DIFFICULT LORNA B123 (P)

SIRE: TARCOMBE FORT N093 (S)
 MAWARRA WEST WING (AI) (H)
 TARCOMBE VENUS J180 (H)
 TARCOMBE VENUS 18 (AI) (H)

SOUTH BUKALONG WALKER 6 (AI) (P)
 SOUTH BUKALONG WALLACE 2 (P)
 SOUTH BUKALONG VICTORIA 152 (P)

DAM: TALBALBA CHOICE H43 (AI) (H#)
 TALBALBA WAVER (AI) (H)
 TALBALBA CHOICE F080 (AI) (H)
 TALBALBA CHOICE D051 (H)



Horned bull. Long, strong topped bull with excellent CE and high marbling.

May 2022 Hereford BREEDPLAN

CEDir	CEDtrs	GL	BW	200	400	600	MCW	MILK	SS	DC	C WT	EMA	RIB	RUMP	RBY %	IMF %
+4.1	+4.9	-1	+5.2	+35	+50	+72	+44	+11	+0.0	-3.4	+45	+2.4	+1.5	+2.0	+0.3	+1.1
45%	37%	62%	74%	70%	70%	71%	65%	60%	77%	43%	62%	52%	59%	63%	54%	60%
\$Index values:		Southern Self-Replacing Index: +\$157				Northern Self-Replacing Index: +\$146				Southern Baldy Maternal Index: +\$157			Northern Baldy Terminal Index: +\$104			

Traits Observed: CE,BWT,200WT,400WT,SS,FAT,EMA,IMF,Genomics

Purchaser: _____ Price: \$ _____

Lot 53**TALBALBA EXECUTIVE R146 (P)**

Tattoo: R146

Born: 04/10/2020

Rego No.: R5XR146

ALLENDALDE WATERHOUSE D1 (PP)
 DAYS EXECUTIVE K168 (PP)
 DAYS SILVIA G13 (AI) (P)

SIRE: TALBALBA EXECUTIVE P022 (AI) (P)
 SOUTH BUKALONG WALLACE 2 (P)
 TALBALBA CHOICE H47 (AI) (H#)
 TALBALBA CHOICE F019 (AI) (H)

SOUTH BUKALONG WALLACE 2 (P)
 TALBALBA WALLACE H83 (AI) (S)
 TALBALBA LIONESS F066 (H)

DAM: TALBALBA ASTER LASS M089 (P)
 ALLENDALDE WATERHOUSE D1 (PP)
 TALBALBA ASTER LASS H74 (AI) (P)
 BELCO ASTER LASS Y31 (P)

Heterozygous Poll. Long, thick bull with very strong carcase data; muscle, exceptional marbling and positive fats.

May 2022 Hereford BREEDPLAN

CEDir	CEDtrs	GL	BW	200	400	600	MCW	MILK	SS	DC	C WT	EMA	RIB	RUMP	RBY %	IMF %
-0.8	+3.7	-0.9	+5.1	+35	+51	+71	+52	+25	+4.0	-5.4	+40	+4.3	+1.9	+2.7	+0.2	+1.7
41%	33%	60%	71%	66%	66%	66%	60%	55%	76%	35%	57%	47%	55%	59%	50%	55%
\$Index values:		Southern Self-Replacing Index: +\$135				Northern Self-Replacing Index: +\$122				Southern Baldy Maternal Index: +\$127			Northern Baldy Terminal Index: +\$89			

Traits Observed: CE,BWT,200WT,400WT,SS,FAT,EMA,IMF,Genomics

Purchaser: _____ Price: \$ _____

Lot 54**TALBALBA GALLIPOLI R145 (PP)**

Tattoo: R145

Born: 03/10/2020

Rego No.: R5XR145

DAYS ELABORATE J59 (AI) (P)
 DAYS GALLIPOLI L142 (PP)
 DAYS FANCY J76 (AI) (P)

SIRE: TALBALBA GALLIPOLI P072 (P)
 MAWARRA BLACK HEART (H)
 TALBALBA CHERRY RIPE L031 (H)
 TALBALBA CHERRY RIPE F026 (H)

ALLENDALDE WATERHOUSE D1 (PP)
 DAYS EXECUTIVE K168 (PP)
 DAYS SILVIA G13 (AI) (P)

DAM: TALBALBA MONICA P183 (P)
 BOWMONT STORM C115 (AI) (H)
 TALBALBA MONICA G079 (H)
 TALBALBA MONICA B172 (H)



Homozygous Poll. Long bull with good growth and structure. He has a high EMA and will add yield.

May 2022 Hereford BREEDPLAN

CEDir	CEDtrs	GL	BW	200	400	600	MCW	MILK	SS	DC	C WT	EMA	RIB	RUMP	RBY %	IMF %
+0.4	-0.7	+0.0	+4.7	+34	+55	+83	+84	+19	+1.3	-1.4	+56	+4.7	+0.2	+0.9	+1.4	-0.1
36%	29%	57%	68%	65%	65%	66%	61%	54%	76%	33%	58%	48%	55%	59%	50%	56%
\$Index values:		Southern Self-Replacing Index: +\$113				Northern Self-Replacing Index: +\$100				Southern Baldy Maternal Index: +\$120			Northern Baldy Terminal Index: +\$95			

Traits Observed: CE,BWT,200WT,400WT,SS,FAT,EMA,IMF,Genomics

Purchaser: _____ Price: \$ _____

Lot 55**TALBALBA GALLIPOLI R122 (H#)****Tattoo: R122****Born: 24/09/2020****Rego No.: R5XR122**

DAYS ELABORATE J59 (AI) (P)

DAYS GALLIPOLI L142 (PP)

DAYS FANCY J76 (AI) (P)

SIRE: TALBALBA GALLIPOLI P072 (P)

MAWARRA BLACK HEART (H)

TALBALBA CHERRY RIPE L031 (H)

TALBALBA CHERRY RIPE F026 (H)

HARVIE HIGH ROLLER ET 66X (IMP CAN) (AI) (ET) (P)

OAK DOWNS LAWLOIT L75 (AI) (PP)

OAK DOWNS RUBY F165 (P)

DAM: TALBALBA LENA P015 (AI) (P)

GLENTREVOR WALLACE H427 (AI) (PP)

TALBALBA LENA L168 (AI) (P)

TALBALBA LENA J109 (H)

Horned bull. Low birth weight bull from a first calver. High EMA bull.

May 2022 Hereford BREEDPLAN

CEDir	CEDtrs	GL	BW	200	400	600	MCW	MILK	SS	DC	C WT	EMA	RIB	RUMP	RBY %	IMF %
+7.6	+2.6	-3.1	+1.5	+24	+40	+62	+59	+15	+1.4	-1.6	+50	+5.9	+0.0	+0.5	+2.2	+0.1
34%	26%	59%	69%	64%	64%	65%	59%	51%	75%	31%	56%	47%	54%	58%	49%	54%
\$Index values:		Southern Self-Replacing Index: +\$121				Northern Self-Replacing Index: +\$119				Southern Baldy Maternal Index: +\$140			Northern Baldy Terminal Index: +\$111			

Traits Observed: CE,BWT,200WT,400WT,SS,FAT,EMA,IMF,Genomics

Purchaser: _____ Price: \$ _____

Lot 56**TALBALBA LAWLOIT R086 (P)****Tattoo: R086****Born: 07/09/2020****Rego No.: R5XR086**

HARVIE HIGH ROLLER ET 66X (IMP CAN) (AI) (ET) (P)

OAK DOWNS LAWLOIT L75 (AI) (PP)

OAK DOWNS RUBY F165 (P)

SIRE: TALBALBA LAWLOIT P014 (AI) (S)

INJEMIRA ANZAC H006 (PP)

TALBALBA MONICA L020 (AI) (P)

TALBALBA MONICA G045 (H)

DAYS ELABORATE J59 (AI) (P)

DAYS GALLIPOLI L142 (PP)

DAYS FANCY J76 (AI) (P)

DAM: TALBALBA MONICA P093 (P)

DEVON COURT ADVANCE F052 (H)

TALBALBA MONICA L129 (H)

TALBALBA MONICA C002 (H)

Heterozygous Poll. Very high CE bull with big EMA figure.

May 2022 Hereford BREEDPLAN

CEDir	CEDtrs	GL	BW	200	400	600	MCW	MILK	SS	DC	C WT	EMA	RIB	RUMP	RBY %	IMF %
+7.1	+2.7	-2.8	+3.8	+33	+47	+72	+68	+20	-0.1	-0.3	+53	+6.1	-0.3	-0.3	+2.6	+0.4
35%	26%	58%	68%	63%	63%	63%	58%	47%	75%	29%	53%	45%	51%	55%	47%	51%
\$Index values:		Southern Self-Replacing Index: +\$126				Northern Self-Replacing Index: +\$118				Southern Baldy Maternal Index: +\$150			Northern Baldy Terminal Index: +\$121			

Traits Observed: CE,BWT,200WT,400WT,SS,FAT,EMA,IMF,Genomics

Purchaser: _____ Price: \$ _____

Lot 57**TALBALBA GUNPOWDER R028 (AI) (S)****Tattoo: R028****Born: 12/08/2020****Rego No.: R5XR028**

NJW 73S M326 TRUST 100W ET (IMP USA) (ET) (P)
 C ETF WILDCAT 4248 (ET) (P)
 RPH MAIDEN 95T (P)

SIRE: CHURCHILL GUNPOWDER 657D (IMP USA) (ET) (PP)

GOLDEN OAK OUTCROSS 18U (P)
 CHURCHILL LADY 002X ET (P)
 CHURCHILL LADY 600S ET (P)

GLENDAN PARK STORM W134 (H)
 BOWMONT STORM C115 (AI) (H)
 BOWMONT L MINERVA Y314 (H)

DAM: TALBALBA MONICA K177 (H)

BUNDARRA VICAR (H)
 BUNDARRA MONICA Y101 (H)
 BUNDARRA MONICA R10 (HPR) (H)

Heterozygous Poll. Very high growth bull who should have been in the top of the sale but has does more than his fair share of fighting.

May 2022 Hereford BREEDPLAN

CEDir	CEDtrs	GL	BW	200	400	600	MCW	MILK	SS	DC	C WT	EMA	RIB	RUMP	RBY %	IMF %
+2.0	-2.7	-0.5	+4.1	+41	+65	+94	+76	+19	+3.6	-1.9	+62	+5.2	-0.6	-1.2	+2.0	+0.4
40%	31%	74%	72%	68%	67%	67%	63%	59%	77%	34%	59%	51%	56%	58%	50%	56%
\$Index values:		Southern Self-Replacing Index: +\$153				Northern Self-Replacing Index: +\$136				Southern Baldy Maternal Index: +\$157			Northern Baldy Terminal Index: +\$120			

Traits Observed: GL,CE,BWT,200WT,400WT,SS,FAT,EMA,IMF,Genomics

Purchaser: _____ Price: \$ _____

Lot 58**TALBALBA FORT R101 (P)****Tattoo: R101****Born: 14/09/2020****Rego No.: R5XR101**

SOUTH BUKALONG WALLACE 2 (P)
 WIRRUNA FORT F382 (ET) (PP)
 MOUNT DIFFICULT LORNA B123 (P)

SIRE: TARCOMBE FORT N093 (S)

MAWARRA WEST WING (AI) (H)
 TARCOMBE VENUS J180 (H)
 TARCOMBE VENUS 18 (AI) (H)

SOUTH BUKALONG WALLACE 2 (P)
 TALBALBA WALLACE H83 (AI) (S)
 TALBALBA LIONESS F066 (H)

DAM: TALBALBA CHOICE M112 (P)

BOWMONT STORM C115 (AI) (H)
 TALBALBA CHOICE F132 (H)
 TALBALBA CHOICE 89 (AI) (H)

Heterozygous Poll. High growth, deep bodier bull.

May 2022 Hereford BREEDPLAN

CEDir	CEDtrs	GL	BW	200	400	600	MCW	MILK	SS	DC	C WT	EMA	RIB	RUMP	RBY %	IMF %
+1.0	+2.0	-1.8	+6.1	+37	+63	+92	+86	+11	+0.9	-2.5	+52	+0.4	+0.5	+0.5	-0.1	+0.5
42%	34%	56%	72%	67%	67%	67%	62%	56%	76%	37%	58%	48%	56%	60%	51%	57%
\$Index values:		Southern Self-Replacing Index: +\$139				Northern Self-Replacing Index: +\$118				Southern Baldy Maternal Index: +\$140			Northern Baldy Terminal Index: +\$100			

Traits Observed: CE,BWT,200WT,400WT,SS,FAT,EMA,IMF,Genomics

Purchaser: _____ Price: \$ _____

Lot 59**TALBALBA FORT R100 (H#)****Tattoo: R100****Born: 14/09/2020****Rego No.: R5XR100**

SOUTH BUKALONG WALLACE 2 (P)
 WIRRUNA FORT F382 (ET) (PP)
 MOUNT DIFFICULT LORNA B123 (P)

SIRE: TARCOMBE FORT N093 (S)

MAWARRA WEST WING (AI) (H)
 TARCOMBE VENUS J180 (H)
 TARCOMBE VENUS 18 (AI) (H)

SOUTH BUKALONG WALLACE 2 (P)
 TALBALBA WALLACE H37 (AI) (H#)
 TALBALBA CHOICE F030 (AI) (H)

DAM: TALBALBA MINERVA K141 (H#)

BOWMONT STORM C115 (AI) (H)
 TALBALBA MINERVA H50 (H)
 TALBALBA MINERVA 53 (H)



Horned bull.

May 2022 Hereford BREEDPLAN

CEDir	CEDtrs	GL	BW	200	400	600	MCW	MILK	SS	DC	C WT	EMA	RIB	RUMP	RBY %	IMF %
+4.8	+2.0	+0.8	+3.7	+30	+43	+63	+52	+18	+0.7	-2.3	+38	+1.4	-0.4	-0.6	+0.9	+0.3
41%	33%	53%	72%	67%	66%	67%	61%	55%	75%	36%	57%	48%	55%	58%	50%	55%
\$Index values:		Southern Self-Replacing Index: +\$108				Northern Self-Replacing Index: +\$91				Southern Baldy Maternal Index: +\$119			Northern Baldy Terminal Index: +\$90			

Traits Observed: CE,BWT,200WT,400WT,SS,FAT,EMA,IMF,Genomics

Purchaser: _____ Price: \$ _____

Lot 60**TALBALBA FORT R075 (H#)****Tattoo: R075****Born: 03/09/2020****Rego No.: R5XR075**

SOUTH BUKALONG WALLACE 2 (P)
 WIRRUNA FORT F382 (ET) (PP)
 MOUNT DIFFICULT LORNA B123 (P)

SIRE: TARCOMBE FORT N093 (S)

MAWARRA WEST WING (AI) (H)
 TARCOMBE VENUS J180 (H)
 TARCOMBE VENUS 18 (AI) (H)

BUNDARRA ZAMBIA (H)
 GLENWARRAH LISMORE MORE (H)
 GLENWARRAH LIONESS 35 (H)

DAM: TALBALBA MONICA G045 (H)

FOXFORTH VALUABLE (H)
 TALBALBA MONICA D061 (H)
 BUNDARRA MONICA S4 (H)

Horned bull. Long thick bull from a top cow.

May 2022 Hereford BREEDPLAN

CEDir	CEDtrs	GL	BW	200	400	600	MCW	MILK	SS	DC	C WT	EMA	RIB	RUMP	RBY %	IMF %
-1.6	+1.4	-1.3	+6.6	+36	+60	+82	+77	+11	+0.5	-2	+53	+4.7	-0.1	-0.2	+2.0	+0.6
43%	34%	57%	73%	68%	67%	68%	62%	58%	76%	37%	59%	50%	56%	60%	52%	56%
\$Index values:		Southern Self-Replacing Index: +\$132				Northern Self-Replacing Index: +\$120				Southern Baldy Maternal Index: +\$127			Northern Baldy Terminal Index: +\$92			

Traits Observed: CE,BWT,200WT,400WT,SS,FAT,EMA,IMF,Genomics

Purchaser: _____ Price: \$ _____

Lot 61**TALBALBA FORT R116 (PP)****Tattoo: R116****Born: 21/09/2020****Rego No.: R5XR116**

SOUTH BUKALONG WALLACE 2 (P)
 WIRRUNA FORT F382 (ET) (PP)
 MOUNT DIFFICULT LORNA B123 (P)

SIRE: TARCOMBE FORT N093 (S)

MAWARRA WEST WING (AI) (H)
 TARCOMBE VENUS J180 (H)
 TARCOMBE VENUS 18 (AI) (H)

KARINA CHERRY Z8 (PP)
 TYCOLAH JACK FLASH F82 (PP)
 TYCOLAH COUNTESS Z99 (P)

DAM: TALBALBA CHOICE K30 (AI) (P)

SOUTH BUKALONG WALLACE 2 (P)
 TALBALBA CHOICE H47 (AI) (H#)
 TALBALBA CHOICE F019 (AI) (H)

Homozygous Poll.

May 2022 Hereford BREEDPLAN

CEDir	CEDtrs	GL	BW	200	400	600	MCW	MILK	SS	DC	C WT	EMA	RIB	RUMP	RBY %	IMF %
+1.6	+2.1	-0.2	+5.5	+37	+54	+81	+67	+12	+0.9	-3.4	+49	+1.8	+0.7	+1.0	-0.1	+1.1
43%	35%	58%	72%	67%	67%	67%	62%	56%	75%	37%	58%	48%	55%	59%	51%	56%
\$Index values:		Southern Self-Replacing Index: +\$140				Northern Self-Replacing Index: +\$121				Southern Baldy Maternal Index: +\$137			Northern Baldy Terminal Index: +\$96			

Traits Observed: CE,BWT,200WT,400WT,SS,FAT,EMA,IMF,Genomics

Purchaser: _____ Price: \$ _____

Lot 62**TALBALBA REGULATOR R159 (S)****Tattoo: R159****Born: 12/10/2020****Rego No.: R5XR159**

DAYS CALIBRE G74 (PP)
 DAYS CARBINE J141 (PP)
 ALLENDALE FANCY A270 (P)
SIRE: KANIMBLA REGULATOR M025 (AI) (PP)
 TH 71U 719T MR HEREFORD 11X (IMP USA) (P)
 KANIMBLA MISS HEREFORD J025 (AI) (P)
 KANIMBLA ZENA G034 (P)

COOTHARABA MAGNUM (H)
 TALBALBA ZEALOT (AI) (H)
 TALBALBA CHERRY RIPE A160 (AI) (H)

DAM: TALBALBA MINERVA H196 (H)

BUNDARRA WALLY (H)
 TALBALBA MINERVA B174 (H)
 BUNDARRA MINERVA W14 (AI) (H)

Heterozygous poll. Long, strong topped bull who gets around well. Very good mother.

May 2022 Hereford BREEDPLAN

CEDir	CEDtrs	GL	BW	200	400	600	MCW	MILK	SS	DC	C WT	EMA	RIB	RUMP	RBY %	IMF %
+0.9	+2.2	+1.5	+5.2	+34	+55	+73	+60	+14	+1.6	-1.7	+44	+3.6	-0.6	-0.7	+1.7	-0.4
41%	33%	59%	72%	67%	67%	67%	62%	58%	77%	34%	57%	49%	54%	58%	50%	55%
\$Index values:		Southern Self-Replacing Index: +\$120				Northern Self-Replacing Index: +\$106				Southern Baldy Maternal Index: +\$121			Northern Baldy Terminal Index: +\$85			

Traits Observed: CE,BWT,200WT,400WT,SS,FAT,EMA,IMF,Genomics

Purchaser: _____ Price: \$ _____

Lot 63**TALBALBA REGULATOR R180 (P)****Tattoo: R180****Born: 06/11/2020****Rego No.: R5XR180**

DAYS CALIBRE G74 (PP)
 DAYS CARBINE J141 (PP)
 ALLENDALE FANCY A270 (P)

SIRE: KANIMBLA REGULATOR M025 (AI) (PP)

TH 71U 719T MR HEREFORD 11X (IMP USA) (P)
 KANIMBLA MISS HEREFORD J025 (AI) (P)
 KANIMBLA ZENA G034 (P)

SOUTH BUKALONG WALLACE 2 (P)
 TALBALBA WALLACE H83 (AI) (S)
 TALBALBA LIONESS F066 (H)

DAM: TALBALBA CHOICE L107 (P)

BOWMONT STORM C115 (AI) (H)
 TALBALBA CHOICE G167 (H)
 TALBALBA A041 (AI) (H)

Heterozygous Poll. Younger bull from another top end cow. Long, growthy bull with marbling potential.

May 2022 Hereford BREEDPLAN

CEDir	CEDtrs	GL	BW	200	400	600	MCW	MILK	SS	DC	C WT	EMA	RIB	RUMP	RBY %	IMF %
+4.0	+1.7	+0.7	+4.2	+30	+41	+58	+40	+14	+1.1	-1.5	+35	+2.8	+0.5	+0.5	+0.6	+0.9
42%	34%	59%	68%	67%	66%	66%	62%	56%	75%	34%	57%	48%	54%	58%	50%	56%
\$Index values:		Southern Self-Replacing Index: +\$110				Northern Self-Replacing Index: +\$99				Southern Baldy Maternal Index: +\$118			Northern Baldy Terminal Index: +\$87			

Traits Observed: CE,200WT,400WT,SS,FAT,EMA,IMF,Genomics

Purchaser: _____ Price: \$ _____

Lot 64**TALBALBA REGULATOR R020 (PP)****Tattoo: R020****Born: 09/08/2020****Rego No.: R5XR020**

DAYS CALIBRE G74 (PP)
 DAYS CARBINE J141 (PP)
 ALLENDALE FANCY A270 (P)

SIRE: KANIMBLA REGULATOR M025 (AI) (PP)

TH 71U 719T MR HEREFORD 11X (IMP USA) (P)
 KANIMBLA MISS HEREFORD J025 (AI) (P)
 KANIMBLA ZENA G034 (P)

MATARIKI HOLY - SMOKE (IMP NZL) (P)
 WIRRUNA JUSTIN J13 (AI) (PP)
 WIRRUNA DOREEN G393 (P)

DAM: TALBALBA CHOICE N108 (AI) (P)

TALBALBA WALLACE H83 (AI) (S)
 TALBALBA CHOICE L107 (P)
 TALBALBA CHOICE G167 (H)

Homozygous poll. Very high growth bull who maintains CE. Mother has one of next years best.

May 2022 Hereford BREEDPLAN

CEDir	CEDtrs	GL	BW	200	400	600	MCW	MILK	SS	DC	C WT	EMA	RIB	RUMP	RBY %	IMF %
+1.5	+2.4	-2.6	+7.0	+44	+71	+102	+83	+15	+2.6	-2.7	+65	+5.3	+0.2	+0.3	+1.6	+0.2
44%	36%	61%	71%	66%	65%	66%	62%	55%	76%	36%	57%	49%	54%	58%	50%	56%
\$Index values:		Southern Self-Replacing Index: +\$175				Northern Self-Replacing Index: +\$157				Southern Baldy Maternal Index: +\$174			Northern Baldy Terminal Index: +\$121			

Traits Observed: CE,BWT,200WT,400WT,SS,FAT,EMA,IMF,Genomics

Purchaser: _____ Price: \$ _____

Lot 65**TALBALBA REGULATOR R064 (PP)****Tattoo: R064****Born: 28/08/2020****Rego No.: R5XR064**

DAYS CALIBRE G74 (PP)
 DAYS CARBINE J141 (PP)
 ALLENDALE FANCY A270 (P)

SIRE: KANIMBLA REGULATOR M025 (AI) (PP)

TH 71U 719T MR HEREFORD 11X (IMP USA) (P)
 KANIMBLA MISS HEREFORD J025 (AI) (P)
 KANIMBLA ZENA G034 (P)

ALLENDALE WATERHOUSE D1 (PP)
 DAYS EXECUTIVE K168 (PP)
 DAYS SILVIA G13 (AI) (P)

DAM: TALBALBA CHOICE N034 (P)

SOUTH BUKALONG WALLACE 2 (P)
 TALBALBA CHOICE G063 (AI) (H#)
 TALBALBA CHOICE E017 (AI) (H)

Homozygous Poll. High CE bull with terrific carcass. Excellent Executive mother.

May 2022 Hereford BREEDPLAN

CEDir	CEDtrs	GL	BW	200	400	600	MCW	MILK	SS	DC	C WT	EMA	RIB	RUMP	RBY %	IMF %
+5.0	+4.2	-4.4	+4.3	+35	+52	+74	+51	+20	+3.5	-4	+50	+5.6	+1.0	+1.4	+1.0	+1.1
43%	35%	62%	72%	68%	68%	69%	64%	57%	76%	36%	59%	50%	56%	61%	52%	58%
\$Index values:		Southern Self-Replacing Index: +\$156				Northern Self-Replacing Index: +\$145				Southern Baldy Maternal Index: +\$161			Northern Baldy Terminal Index: +\$115			

Traits Observed: CE,BWT,200WT,400WT,SS,FAT,EMA,IMF,Genomics

Purchaser: _____ Price: \$ _____

Lot 66**TALBALBA REGULATOR R084 (S)****Tattoo: R084****Born: 07/09/2020****Rego No.: R5XR084**

DAYS CALIBRE G74 (PP)
 DAYS CARBINE J141 (PP)
 ALLENDALE FANCY A270 (P)

SIRE: KANIMBLA REGULATOR M025 (AI) (PP)

TH 71U 719T MR HEREFORD 11X (IMP USA) (P)
 KANIMBLA MISS HEREFORD J025 (AI) (P)
 KANIMBLA ZENA G034 (P)

IRONBARK M428 HOT SHOT W264 (AI) (H)
 TALBALBA WAVER (AI) (H)
 TALBALBA MONICA A033 (H)

DAM: TALBALBA LENA J084 (AI) (H)

COOTHARABA MAGNUM (H)
 TALBALBA LENA G047 (AI) (H)
 TALBALBA LENA A063 (H)

Heterozygous Poll. Low birth weight bull with muscle.

May 2022 Hereford BREEDPLAN

CEDir	CEDtrs	GL	BW	200	400	600	MCW	MILK	SS	DC	C WT	EMA	RIB	RUMP	RBY %	IMF %
+3.2	+2.6	-0.5	+1.8	+19	+23	+33	+2	+17	+1.4	-3	+24	+4.5	+1.5	+2.3	+0.6	+0.7
42%	33%	61%	72%	66%	66%	66%	60%	54%	76%	33%	56%	48%	54%	58%	50%	54%
\$Index values:		Southern Self-Replacing Index: +\$94				Northern Self-Replacing Index: +\$90				Southern Baldy Maternal Index: +\$95			Northern Baldy Terminal Index: +\$61			

Traits Observed: CE,BWT,200WT,400WT,SS,FAT,EMA,IMF,Genomics

Purchaser: _____ Price: \$ _____

Lot 67**TALBALBA EXECUTIVE R157 (P)**

Tattoo: R157

Born: 11/10/2020

Rego No.: R5XR157

ALLENDALDE WATERHOUSE D1 (PP)
 DAYS EXECUTIVE K168 (PP)
 DAYS SILVIA G13 (AI) (P)

SIRE: TALBALBA EXECUTIVE P022 (AI) (P)
 SOUTH BUKALONG WALLACE 2 (P)
 TALBALBA CHOICE H47 (AI) (H#)
 TALBALBA CHOICE F019 (AI) (H)

ALLENDALDE ANZAC E114 (PP)
 INJEMIRA ANZAC AI J188 (AI) (PP)
 INJEMIRA PATTIE D119 (P)

DAM: TALBALBA MINERVA M133 (P)
 BOWMONT STORM C115 (AI) (H)
 TALBALBA MINERVA H314 (H)
 TALBALBA MINERVA C091 (AI) (H)

Heterozygous Poll. Big, deep easy doing bull.

May 2022 Hereford BREEDPLAN

CEDir	CEDtrs	GL	BW	200	400	600	MCW	MILK	SS	DC	C WT	EMA	RIB	RUMP	RBY %	IMF %
-0.8	+1.4	-2.3	+5.8	+40	+64	+93	+100	+20	+1.2	-2.3	+63	+4.6	+0.9	+1.4	+0.7	+0.3
41%	33%	59%	70%	64%	64%	65%	60%	53%	73%	34%	56%	47%	53%	58%	49%	54%
\$Index values:		Southern Self-Replacing Index: +\$123				Northern Self-Replacing Index: +\$107				Southern Baldy Maternal Index: +\$127				Northern Baldy Terminal Index: +\$100		

Traits Observed: CE,BWT,200WT,400WT,SS,FAT,EMA,IMF,Genomics

Purchaser: _____ Price: \$ _____

Lot 68**TALBALBA HOFFMAN R176 (PP)**

Tattoo: R176

Born: 05/11/2020

Rego No.: R5XR176

TH 122 71I VICTOR 719T (IMP USA) (P)
 H VICTOR 0136 (IMP USA) (P)
 H LADY EXCELL 824 ET (P)

SIRE: TALBALBA THE HOFF P059 (AI) (P)
 MAWARRA TRAIL BLAZER (AI) (H)
 TALBALBA MONICA E038 (AI) (H)
 TALBALBA MONICA A033 (H)

YALGOO VICEROY E316 (ET) (PP)
 YALGOO JACOB J053 (PP)
 YALGOO MEAGAN F178 (AI) (P)

DAM: TALBALBA MOONBEAM N163 (P)
 YAVENVALE FUNCTIONAL F273 (S)
 TALBALBA MOONBEAM K161 (H#)
 TALBALBA MOONBEAM G126 (AI) (H#)

Homozygous Poll. Very thick, muscular bull with good fertility data and a high retail beef yield.

May 2022 Hereford BREEDPLAN

CEDir	CEDtrs	GL	BW	200	400	600	MCW	MILK	SS	DC	C WT	EMA	RIB	RUMP	RBY %	IMF %
-0.3	+2.8	-3.9	+6.0	+41	+68	+97	+71	+21	+3.3	-3.6	+64	+6.1	+0.2	+0.4	+2.7	+0.2
35%	27%	57%	65%	63%	63%	64%	58%	51%	72%	31%	54%	44%	51%	55%	47%	51%
\$Index values:		Southern Self-Replacing Index: +\$179				Northern Self-Replacing Index: +\$165				Southern Baldy Maternal Index: +\$173				Northern Baldy Terminal Index: +\$117		

Traits Observed: CE,200WT,400WT,SS,FAT,EMA,IMF,Genomics

Purchaser: _____ Price: \$ _____

Lot 69**TALBALBA EXECUTIVE R153 (H#)****Tattoo: R153****Born: 08/10/2020****Rego No.: R5XR153**

ALLENDALDE WATERHOUSE D1 (PP)
 DAYS EXECUTIVE K168 (PP)
 DAYS SILVIA G13 (AI) (P)

SIRE: TALBALBA EXECUTIVE P022 (AI) (P)

SOUTH BUKALONG WALLACE 2 (P)
 TALBALBA CHOICE H47 (AI) (H#)
 TALBALBA CHOICE F019 (AI) (H)

DEBARRY ROCKY C303 (P)
 YAVENVALE FUNCTIONAL F273 (S)
 YAVENVALE JULIET B136 (AI) (H)

DAM: TALBALBA CORISANDE J085 (P)

DEBARRY SULTAN 3 (P)
 BELLCO CORISANDE A57 (P)
 BELLCO CORISANDE V53 (P)

Horned bull.

May 2022 Hereford BREEDPLAN

CEDir	CEDtrs	GL	BW	200	400	600	MCW	MILK	SS	DC	C WT	EMA	RIB	RUMP	RBY %	IMF %
+0.5	+2.9	-2.2	+5.5	+33	+48	+74	+85	+13	+1.7	-1.4	+42	+2.5	+0.0	+0.2	+0.8	-0.1
37%	30%	57%	66%	64%	64%	65%	60%	55%	74%	32%	56%	46%	53%	57%	48%	53%
\$Index values:		Southern Self-Replacing Index: +\$93				Northern Self-Replacing Index: +\$80				Southern Baldy Maternal Index: +\$101			Northern Baldy Terminal Index: +\$78			

Traits Observed: CE,200WT,400WT,SS,FAT,EMA,IMF,Genomics

Purchaser: _____ Price: \$ _____

Lot 70**TALBALBA FORT R185 (P)****Tattoo: R185****Born: 20/11/2020****Rego No.: R5XR185**

SOUTH BUKALONG WALLACE 2 (P)
 WIRRUNA FORT F382 (ET) (PP)
 MOUNT DIFFICULT LORNA B123 (P)

SIRE: TARCOMBE FORT N093 (S)

MAWARRA WEST WING (AI) (H)
 TARCOMBE VENUS J180 (H)
 TARCOMBE VENUS 18 (AI) (H)

SOUTH BUKALONG WALLACE 2 (P)
 TALBALBA WALLACE G091 (AI) (P)
 TALBALBA CHOICE E110 (AI) (H)

DAM: TALBALBA J205 (H#)

BOWMONT STORM C115 (AI) (H)
 TALBALBA CHOICE G043 (TW) (H)
 TALBALBA CHOICE C018 (H)

Heterozygous Poll.

May 2022 Hereford BREEDPLAN

CEDir	CEDtrs	GL	BW	200	400	600	MCW	MILK	SS	DC	C WT	EMA	RIB	RUMP	RBY %	IMF %
+3.3	+3.0	-1.1	+4.7	+33	+49	+77	+68	+15	+0.5	-2.8	+47	+2.8	+0.4	+0.8	+1.1	+0.7
41%	33%	55%	70%	68%	67%	68%	62%	57%	72%	37%	59%	48%	55%	59%	51%	56%
\$Index values:		Southern Self-Replacing Index: +\$137				Northern Self-Replacing Index: +\$124				Southern Baldy Maternal Index: +\$142			Northern Baldy Terminal Index: +\$104			

Traits Observed: CE,200WT,400WT,SS,FAT,EMA,IMF,Genomics

Purchaser: _____ Price: \$ _____

Lot 71**TALBALBA HOFFMAN R186 (H#)****Tattoo: R186****Born: 10/12/2020****Rego No.: R5XR186**

TH 122 711 VICTOR 719T (IMP USA) (P)
H VICTOR 0136 (IMP USA) (P)
H LADY EXCELL 824 ET (P)

SIRE: TALBALBA THE HOFF M035 (AI) (P)
SOUTH BUKALONG WALLACE 2 (P)
TALBALBA MINERVA G120 (AI) (H#)
TALBALBA MINERVA E077 (AI) (H)

BUNDARRA ZAMBIA (H)
GLENWARRAH LISMORE MORE (H)
GLENWARRAH LIONESS 35 (H)

DAM: TALBALBA CHOICE G042 (H)
COOTHARABA MAGNUM (H)
TALBALBA CHOICE D091 (AI) (H)
BUNDARRA CHOICE U111 (H)

Horned bull. Very high yielding, good skinned bull.

May 2022 Hereford BREEDPLAN

CEDir	CEDtrs	GL	BW	200	400	600	MCW	MILK	SS	DC	C WT	EMA	RIB	RUMP	RBY %	IMF %
+1.3	+2.4	-0.5	+4.3	+33	+56	+79	+58	+14	+2.2	-2.6	+57	+6.9	-0.3	-0.5	+3.1	+0.4
41%	33%	62%	69%	67%	66%	67%	62%	56%	67%	35%	58%	49%	55%	59%	51%	56%
\$Index values:		Southern Self-Replacing Index: +\$160				Northern Self-Replacing Index: +\$153				Southern Baldy Maternal Index: +\$157			Northern Baldy Terminal Index: +\$109			

Traits Observed: CE,200WT,400WT,FAT,EMA,IMF,Genomics

Purchaser: _____ Price: \$ _____





Client photos





A NUTRIEN AG SOLUTIONS PARTNER

25
Years

STUD SALES

Australia

LIVE AUCTIONS & ONLINE SALES

BULLS, FEMALES & GENETICS

PRIVATE SALES, COMMERCIAL SALES, FEEDLOT SALES



The Most Progressive Livestock Agents in Australia.



Mark Duthie
0448 016 950

Harvey Weyman-Jones
0414 941 788

Peter Brazier
0407 525 983

Josh Heck
0409 732 676

Georgie Connor
0428 347 550

Nikita Duthie
0400 434 085

www.gdlrural.com.au

TOOWOOMBА



**CROP
INPUTS**



AGRONOMY



**LIVESTOCK
AGENCY**



**ANIMAL
MANAGEMENT**



**ANIMAL
HEALTH**



FENCING



FINANCE



INSURANCE



REAL ESTATE

Nutrien Ag Solutions is committed to providing clients with services and expertise to better their farming operation.

Nutrien Ag Solutions Toowoomba	388 Taylor St, Toowoomba	(07) 4637 3000
Branch Manager	James McMahon	0437 674 744
Merchandise	Roby Parker	0477 984 473
Livestock	Andrew Costello	0429 485 191
	Aaron Randall	0458 732 117
	Jenny Radke	07 4637 3013
	Meg Ryan	07 4637 3062
Stud Stock	Colby Ede	0417 265 980
Finance	Robert Moncrieff	0408 296 952
Insurance	Lizz Whittall	0409 267 068

QUEENSLAND LIVESTOCK AGENTS ASSOCIATION LIMITED

STANDARD STUD STOCK - AUCTION TERMS AND ~ CONDITIONS OF SALE

IMPORTANT NOTICE

All bids shall be treated as offers made upon the following Terms and Conditions of Sale and all persons present are admitted to attend the sale on the basis that they have notice of these Terms and Conditions.

1. The highest bidder shall, subject to Condition 2, be the purchaser provided that the vendor reserves the right to bid either by himself or through his agent or auctioneer and should any dispute arise among the bidders for any lot, during or immediately after sale of the lot, it shall be settled at the auctioneers absolute discretion who may, should one of the disputants advance, put the lot or lots up again. The bidding from time to time shall be regulated by the auctioneer and no bid shall be retracted.
2. The sale will be conducted on a "Sale" or "No Sale" basis whereby the lot for sale shall be knocked down to the highest bidder, but the sale will be subject to the acceptance of the highest bid by the vendor who will immediately after the fall of the hammer declare "Sale" or "No Sale" Should the vendor reject the bid of the highest bidder such bidder will have the right of first refusal of the lot at the vendor's nominated price for one hour after the lot has been passed out of the ring on the Terms and Conditions herein set forth in so far as they shall apply.
3. The details of the purchaser, the purchase price and the lot sold as recorded by the sale clerk for and on behalf of the auctioneer shall be equally binding on both purchaser and vendor.
4. The auctioneer expressly reserves the right, without giving any reason therefore, to:
 - (a) Refuse to acknowledge any bid;
 - (b) Withdraw any lot or lots before or during the sale;
 - (c) Exclude any person from the auction venue should it think fit.5. Each lot in all cases shall be at the risk and expense of the purchaser, upon acceptance of his bid by the vendor or upon acceptance of the highest bidder's offer by the vendor whichever shall be the earlier.
6. Except as expressly provided in these Terms and Conditions of Sale no guarantee or warranty shall be given in respect of any lot sold under these Conditions as to pedigree, sex, age, breeding condition or otherwise howsoever, and no guarantee, warranty or condition whatsoever shall be implied from any affirmation made before or at the time of the sale, or from any circumstances of the sale, but in all cases where a guarantee is intended the same shall attach and be enforceable only if reduced to writing before delivery of the lot and signed by the vendor or by the auctioneer acting as agent for the vendor, and the absence of such writing shall be conclusive evidence in case of dispute that no guarantee warranty or condition whatsoever was given or implied.
7. In the event of any dispute in respect to the sale of any lot.
 - (i) The purchaser shall nevertheless be obliged to pay to the auctioneer the full purchase price and any other monies or interest payable by the purchaser in accordance with these terms and conditions;
 - (ii) The vendor and the purchaser shall resolve the dispute between themselves;
 - (iii) The auctioneer shall have no liability or responsibility in regard to the dispute; and
 - (iv) No lot shall be returned to the auctioneer and the purchaser shall indemnify the auctioneer for all costs, expenses and damages which the auctioneer is put to or incurs by reason of the purchaser so doing.
8. The name of the vendor for whom the auctioneer acts is acknowledged to have been furnished to purchasers prior to sale and further particulars will in all cases be furnished to a purchaser if required ~ the case of any dispute the remedy of the purchaser shall be against the vendor only and in no case or under any circumstances against the auctioneer who is to be regarded for all intents and purposes as agent for a disclosed principal.
9.
 - (a) **PAYMENT** – Unless prior credit arrangements have been made in writing with the auctioneer the full purchase price for each lot shall be due and payable to the auctioneer in cash upon acceptance of the highest bid or the highest bidder's offer by the vendor and prior to delivery. Notwithstanding that delivery is given to or possession obtained by the purchaser or his representative prior to the payment of the purchase money in full the property in any lot which is sold shall not pass to the purchaser until the full purchase price and all cheques, promissory notes, bills of exchange, acceptance orders or drafts given in connection with such payment have been paid and liquidated, and until property shall pass, the purchaser shall hold such lot as bailee, provided that in all cases should such payment not have been made and liquidated within 14 days of the date of the sale the auctioneer reserves the right to:
 - (i) Rescind the contract on behalf of the vendor and repossess and resell any lot;
 - (ii) Recover from the purchaser interest upon the purchase price at a rate per annum which aggregates the 90 day Bill Rate plus two percentum. For the purposes of this condition "the 90 day Bill Rate" is the rate published regularly in the Australian Financial Review, expressed as a percentage per annum. If at any time the Financial Review ceases to publish a 90 day Bill Rate, the auctioneer shall determine and advise the purchaser of the interest rate to apply for the purpose of this condition.
 - (b) The auctioneer is selling as the del credere agent of the vendor and the full purchase price of any lot sold shall be payable by the purchaser to the auctioneer and be fully recoverable by the auctioneer in its own name.
10. If the purchaser shall neglect or fail to comply with any of the within conditions, any lot purchased by him may be immediately resold by public auction or private contract, with or without notice, at the risk of the former purchaser, who will be held responsible for all loss and expenses arising out of such resale, and shall not participate in any profit accruing therefrom.
11. Any vendor or purchaser removing the sale number from any lot after it has been sold will fully indemnify all affected parties for any loss, costs or damage should the lot be wrongly delivered.
12. The purchasers, if more than one, shall be jointly and severally bound by these Terms and Conditions, and shall jointly and severally carry out and perform same.
13. Any person who advances a bid on a lot shall do so on the expressed condition and understanding that should that person's bid be the highest bid and such bid is accepted by the vendor, then that person will be held personally liable for the price so agreed upon, regardless of the fact that that person may be acting on behalf of another party, either disclosed or undisclosed to the vendor or the auctioneer, provided however, that this Condition shall not in any way negate the vendor's right to claim against any principal and in such case the bidder's liability shall be construed to be by way of guarantee.
14. The auctioneer may, should it think fit, make arrangements on a purchaser's behalf for the feeding, watering, trucking, shipping of and general attendance to any lot after sale but no responsibility will be accepted by the auctioneer and all such services will be at the purchaser's risk and expense.
15. No lot will be delivered until the sales invoice has been checked and signed by the purchaser or his duly authorised representative.
16.
 - (a) Each lot in all cases shall be sold with all faults, if any, and excepting those conditions and warranties implied by the Trade Practices Act or any applicable State legislation which cannot be contractually excluded and excepting conditions and warranties expressly contained in these Terms and Conditions of Sale, any express or implied condition, statement or warranty, statutory or otherwise, is hereby excluded. The auctioneer is not liable in respect of any error, misdescription or omission in any particulars appearing or stated regarding the descriptions or pedigrees of any lot offered for sale and no such error, misdescription or omission shall entitle the purchaser to annul the sale or reject the lot or claim any compensation, damage or abatement in price.
 - (b) Each lot will be sold subject to passing all veterinary tests required by the law of the State or country to which the purchaser intends to transport that particular lot, such tests to be undertaken at the purchaser's expense and concluded immediately following the sale. In the event of a lot failing to pass these tests, the sale shall be null and void, any purchase moneys paid by the purchaser shall be refunded and property in the lot shall revert to or remain with the vendor.
17. **GUARANTEES OF FERTILITY**
- 17.1 **BULLS.** Save and except for calves at foot, all bulls are guaranteed breeders and to so prove within six months of the date of sale or by reaching the age of 30 months whichever date shall be the later.
- 17.2 **FEMALES.** Save and except for female calves at foot, all females are guaranteed to be in calf or go into calf within six months of the date of sale or by the age of 30 months whichever date shall be the later. A positive pregnancy test certified by a qualified veterinary surgeon shall be sufficient evidence that the animal is in calf.
- 17.3 Claims under Clauses 17.1 and 17.2 guarantees of fertility shall be made to the vendor within six months from the date of sale or prior to the animal entering a quarantine area other than on the vendor's property.
- 17.3.1 All claims must be accompanied by a veterinary certificate which shall clearly identify the basis of the claim.
- 17.3.2 Infertility resulting from injury or disease occurring after the sale of the animal shall not be covered by this guarantee.

- 17.3.3 The vendor retains the right to have the animal placed on a property nominated by him or returned to his own property for further assessment of fertility for a period not exceeding six months. In the event of the animal being proven fertile within the period, the costs incurred shall be borne by the purchaser. In the event of the animal not being proven fertile within the period the costs incurred shall be borne by the vendor.
- 17.4 **LIABILITY OF A VENDOR.** Except for costs defined elsewhere in the conditions of sale, the liability of a vendor in respect of claims relating to fertility shall not exceed the purchase price of the animal(s) or to provide mutually agreed upon replacement animals.
- 17.5 **REFUNDS.** In the event of a claim being substantiated and the purchase price being refunded, the animal/s shall automatically become the property of the vendor and be returned to him or disposed of according to his instructions at his expense.
- 17.6 This guarantee shall be voided by the purchaser if
 - (a) The animal is returned to the vendor:
 - (i) in poor physical condition or with any injury;
 - (ii) tests carried out on behalf of the vendor within fourteen days of such return proved positive to any diseases which may affect the animals fertility or ability to breed naturally; or
 - (b) the purchaser has collected and stored semen from a bull or embryos from a female.
- 17.7 In the event of a dispute as to whether a lot is a breeder, such dispute shall be resolved by the vendor and the purchaser and the auctioneer, while he will use his best endeavours to assist, shall have no liability or responsibility in that regard. In the event that a lot is alleged or proved not to be a breeder, the purchaser shall nevertheless be obliged to pay the auctioneer the full purchase price and any other monies or interest payable by the purchaser in accordance with these Terms and Conditions.
18.
 - (a) Each lot shall be at the risk of the vendor in respect of any damage or injury, whether by disease, accident or otherwise, for the period that the lot be in the custody of the auctioneer, PROVIDED THAT the auctioneer, its servants, agents and employees shall use all reasonable care to protect and control the lot while it is in the auctioneer's custody AND PROVIDED THAT when a lot has been sold, it shall be at the risk of the purchaser in all respects
 - (b) If any vendor brings to the sale premises any lot which is dangerous, or infected with any disease, that vendor shall be liable for all injury, damages, costs, losses, or expenses which the auctioneer may sustain, incur or be put to either directly or indirectly as a result of the vendor so doing. The auctioneer reserves the right, at its absolute discretion, to exclude from the sale, or put out of the sale venue or dispose of, any lot which in its opinion shows signs of any disease, whether infectious, contagious or not, or of any serious fault or of being dangerous.
19. **DELIVERY** – Except at the discretion of the auctioneer no lot shall be delivered to the purchaser unless payment of the purchase money together with any additional charges incurred including those expenses incurred by the auctioneer pursuant to Condition 14 hereof, is first made by the purchaser to the auctioneer. Release of lots may be withheld by the auctioneer until personal cheques are cleared.
20. In these Conditions:
 - (a) References to "Auctioneer" shall be taken to mean as the context so admits, the selling agent or any member, subsidiary or related corporation or body, officer, agent or employee thereof, authorised by the vendor to conduct the sale of the lot;
 - (b) "Purchaser" shall have the meaning ascribed to it in Condition 1;
 - (c) "Vendor" shall mean the person or corporation upon whose account lots are offered for sale and where a stud or farm is named shall mean the proprietor of that stud or farm;
 - (d) "Lot" shall be taken to mean the animal offered for sale and/or sold by the auctioneer on behalf of a vendor prior to the animal entering a quarantine area other than on the vendor's property.
- 17.3.1 All claims must be accompanied by a veterinary certificate which shall clearly identify the basis of the claim.
- 17.3.2 Infertility resulting from injury or disease occurring after the sale of the animal shall not be covered by this guarantee.
- 17.3.3 The vendor retains the right to have the animal placed on a property nominated by him or returned to his own property for further assessment of fertility for a period not exceeding six months. In the event of the animal being proven fertile within the period, the costs incurred shall be borne by the purchaser. In the event of the animal not being proven fertile within the period the costs incurred shall be borne by the vendor.
- 17.4 **LIABILITY OF A VENDOR.** Except for costs defined elsewhere in the conditions of sale, the liability of a vendor in respect of claims relating to fertility shall not exceed the purchase price of the animal(s) or to provide mutually agreed upon replacement animals.
- 17.5 **REFUNDS.** In the event of a claim being substantiated and the purchase price being refunded, the animal/s shall automatically become the property of the vendor and be returned to him or disposed of according to his instructions at his expense.
- 17.6 This guarantee shall be voided by the purchaser if
 - (a) The animal is returned to the vendor:
 - (i) in poor physical condition or with any injury;
 - (ii) tests carried out on behalf of the vendor within fourteen days of such return proved positive to any diseases which may affect the animals fertility or ability to breed naturally; or
 - (b) the purchaser has collected and stored semen from a bull or embryos from a female.
- 17.7 In the event of a dispute as to whether a lot is a breeder, such dispute shall be resolved by the vendor and the purchaser and the auctioneer, while he will use his best endeavours to assist, shall have no liability or responsibility in that regard. In the event that a lot is alleged or proved not to be a breeder, the purchaser shall nevertheless be obliged to pay the auctioneer the full purchase price and any other monies or interest payable by the purchaser in accordance with these Terms and Conditions.
18.
 - (a) Each lot shall be at the risk of the vendor in respect of any damage or injury, whether by disease, accident or otherwise, for the period that the lot be in the custody of the auctioneer, PROVIDED THAT the auctioneer, its servants, agents and employees shall use all reasonable care to protect and control the lot while it is in the auctioneer's custody AND PROVIDED THAT when a lot has been sold, it shall be at the risk of the purchaser in all respects
 - (b) If any vendor brings to the sale premises any lot which is dangerous, or infected with any disease, that vendor shall be liable for all injury, damages, costs, losses, or expenses which the auctioneer may sustain, incur or be put to either directly or indirectly as a result of the vendor so doing. The auctioneer reserves the right, at its absolute discretion, to exclude from the sale, or put out of the sale venue or dispose of, any lot which in its opinion shows signs of any disease, whether infectious, contagious or not, or of any serious fault or of being dangerous.
19. **DELIVERY** – Except at the discretion of the auctioneer no lot shall be delivered to the purchaser unless payment of the purchase money together with any additional charges incurred including those expenses incurred by the auctioneer pursuant to Condition 14 hereof, is first made by the purchaser to the auctioneer. Release of lots may be withheld by the auctioneer until personal cheques are cleared.
20. In these Conditions:
 - (a) References to "Auctioneer" shall be taken to mean as the context so admits, the selling agent or any member, subsidiary or related corporation or body, officer, agent or employee thereof, authorised by the vendor to conduct the sale of the lot;
 - (b) "Purchaser" shall have the meaning ascribed to it in Condition 1;
 - (c) "Vendor" shall mean the person or corporation upon whose account lots are offered for sale and where a stud or farm is named shall mean the proprietor of that stud or farm;
 - (d) "Lot" shall be taken to mean the animal offered for sale and/or sold by the auctioneer on behalf of a vendor.

IMPORTANT NOTICE

The selling agent, its members, subsidiary or related corporations, officers, agents, and employees for themselves and for those for whom they act while exercising due care provide all information without responsibility and give no guarantee whatsoever as to its accuracy.

All persons who attend the sale do so entirely at their risk and the selling agent, its members, subsidiary or related corporations, officers, agents, employees and its principals, for themselves and for those for whom they act, do not assume or accept any responsibility or liability of whatever nature for any injury or damage whatsoever which may occur.

The hammer price is exclusive of GST but GST will be applied to the final hammer price and included on the invoice.

TALBALBA HEREFORDS 6th On Property Sale

BUYER'S INSTRUCTION SLIP

Name: _____

Address: _____

Email: _____

Phone No.: _____ Mobile: _____

Account No.: _____

Lots Purchased: _____

Total No. of Lots: _____

Road Transport Required: _____

Destination: _____

If arranging own transport (please give details): _____

Destination: _____

Date to be collected: _____

Insure for (period): _____

Transfer Registration Certificate to: _____

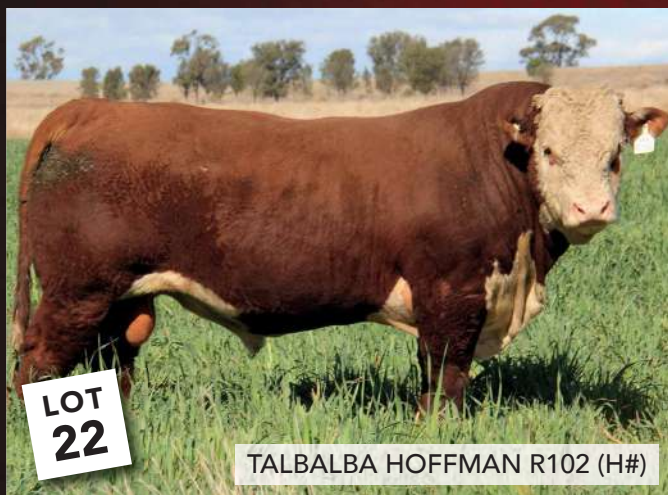
Other Instructions: _____

In the event of the above-mentioned Agent being unwilling to make settlement on my behalf, I agree to do so personally in full within fourteen (14) days from the date of Sale.

Signature of Buyer: _____

Date: Thursday 25th August 2022

NOTES



TALBALBA HOFFMAN R102 (H#)



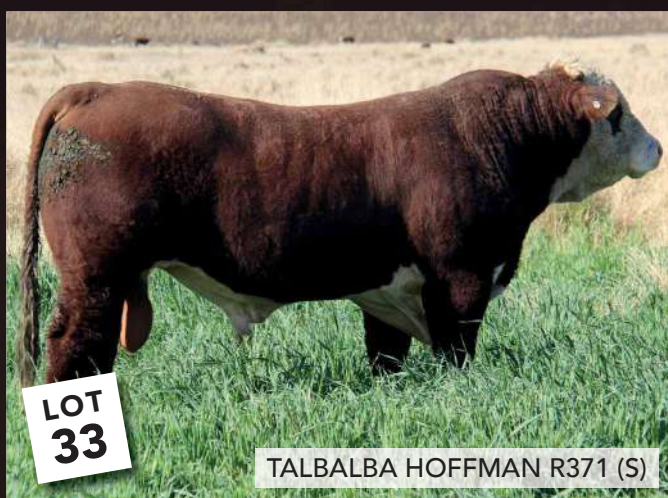
TALBALBA FORT R178 (H#)



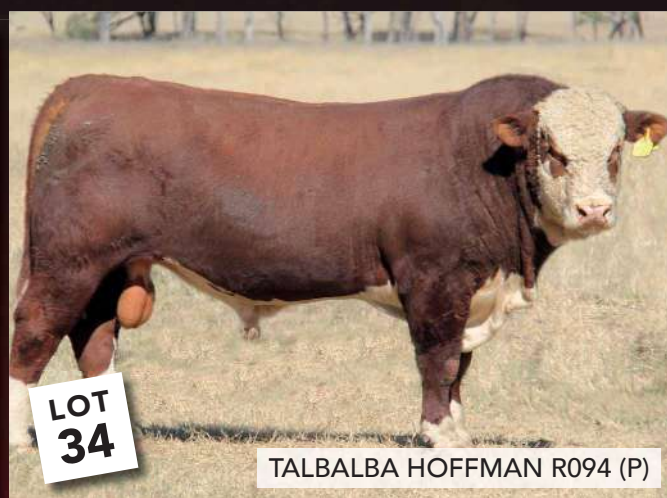
TALBALBA HOFFMAN R165 (PP)



TALBALBA GENESIS R027 (P)



TALBALBA HOFFMAN R371 (S)



TALBALBA HOFFMAN R094 (P)

VIDEOS OF SALE BULLS CAN BE VIEWED VIA OUR WEBSITE

www.talbalba.com



TALBALBA TECHNO R071 (P)

LOT
3



TALBALBA TECHNO R055 (P)

LOT
7



TALBALBA TECHNO R051 (PP)

LOT
4



TALBALBA EXECUTIVE R105 (PP)

LOT
48



TALBALBA TECHNO R130 (S)

LOT
20



TALBALBA HOFFMAN R078 (P)

LOT
28



TALBALBA
HEREFORDS

STEVE AND DEB REID

1392 Nicol Creek Road, Millmerran (Bringalily), QLD

Phone 07 46957182 | Mobile 0427 631 014

Email: talbalbastud@bigpond.com

Web: www.talbalba.com