



TALBALBA HEREFORDS



AuctionsPlus

Buy and Sell stock nationally

4TH
ON PROPERTY
SALE

Free delivery within
500km radius or by
prior arrangement.

All bulls have been
Blooded, inoculated
for 5 in 1, BEF and Vibrio

Semen and
Morphology tested

Complete Breedplan
data and Genomics

Online bidding option
with Auctions Plus

Videos of Sale Bulls
will also be available
via our website
www.talbalba.com

**11:30am THURSDAY
27 AUGUST 2020**

"Delemere"
1392 Nicol Creek Road
Millmerran (Bringalily) QLD

53 BULLS
• 16 DEHORNE
• 37 POLLED

2019 TOP PRICE BULL SOLD TO NEIL JAMES, WANDOAN, QLD FOR \$17,500



Pictured with selling agent Simon Booth, Landmark and Deb, Brooke, Kate and Meg Reid.



Talbalba Emperor P043 (AI) (H)

Welcome to



TALBALBA HEREFORDS

4TH ON-PROPERTY SALE

Thursday 27 August 2020 commencing at 11:30am

"Delemere", 1392 Nicol Creek Road, Millmerran (Bringalily) QLD

16 DEHORNED HEREFORD BULLS • 37 POLL HEREFORD BULLS

Complete Hereford Group Breedplan data.

Semen tested including Morphology.

Blooded, Innoculated 5 in 1, Vibrio and BEF (3 day sickness)

Online bidding option with Auctions Plus

DELIVERY:

All bulls purchased will be delivered free to your door
within 500km radius or by prior arrangement.

VENDORS

Steve and Deb Reid

Phone (07) 46 957182

Steve mobile 0427 631014

Deb mobile 0438 656424

Email: talbalbastud@bigpond.com

Web: www.talbalba.com

AGENTS



Nutrien Livestock

Dalby Office 07 4669 6955

Mark Duthie 0448 016 950
(Stud stock and Auctioneer)

Harvey Weyman-Jones 0414 941 788
(Stud stock)

Peter Daniel 0428 790 967
(Dalby Branch Manager)

Toowoomba Office 07 4637 3000

Colbe Ede 0417 265 980
(Stud stock and Auctioneer)

Simon Booth 0438 756 245
(Livestock)

Andrew Costello 0429 485 191
(Livestock)

Welcome to our 4th on property sale

Through challenging times the beef industry has gone from strength to strength and those with cattle and grass are seeing the best returns of all time. A welcome reward after recent years of considerable outlay to keep our herds alive. It is great to once again present our bulls off pasture, Leucaena and oats.

We are gradually polling our herd as more community focus comes onto animal welfare issues. Despite this, each year we source the best horn bull in both phenotype and performance data we can find to use by AI over elite females to breed a line of horned Herefords to meet the needs of our horned clients and to maintain genetic diversity.

This year's draft of bulls is one of the strongest we have presented in recent years with consistent lines of both polled and horned bulls. It is always a challenge to breed cattle combining the phenotype that we all like, with data that we can use, especially in the hard to measure traits such as calving ease and marbling. We continue to drive improvement through the use of performance data and search widely to find the right sires for our program.

Mawarra Emperor (H) and Talbalba Advance K246 (H) have bred some top end stud sires

and commercial bulls with muscle, capacity and quality backed up by performance data. Lot 1, Talbalba Emperor P043 is the most complete bull we have offered recently with probably the best EBV set of any horned bull sold in Australia this year. We are retaining semen for use in our herd.

The poll section of the sale is dominated by Days Executive with 20 sons catalogued. He has consistently bred a line of cattle that perform on grass. Executive sons will add dollars to your bottom line with more weight in your feeders or finished steers and extra performance out of their easy calving daughters.

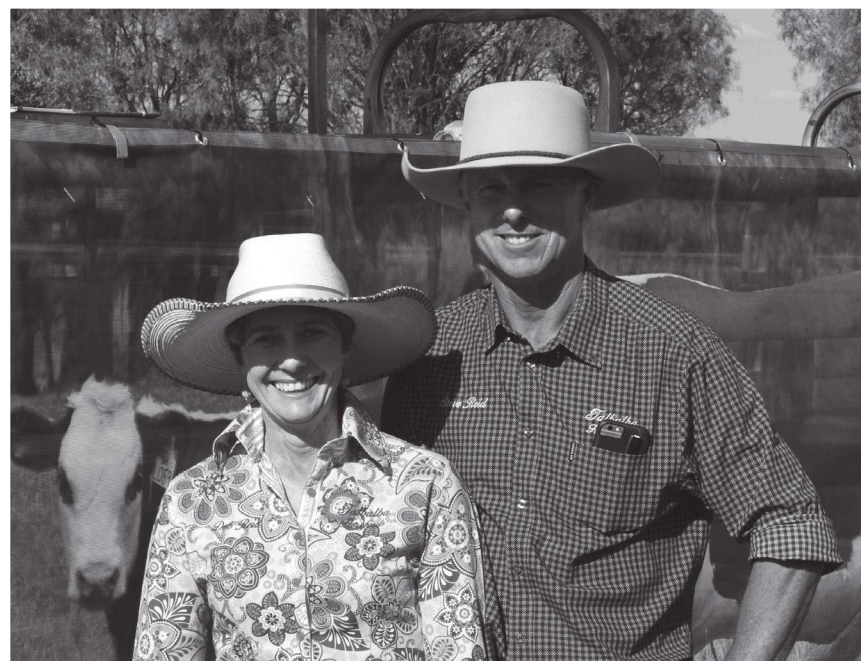
While we expect to conduct our sale as normal, we do understand that some may be wary of crowds due to the Covid crisis. We welcome inspection prior to sale and online bidding is available through Auctionsplus.

I hope the seasons continue to improve and you are able to take advantage of strong cattle prices.

We look forward to seeing you at our sale on the 27th August.

Regards

Steve and Deb



NOTES TO BUYERS

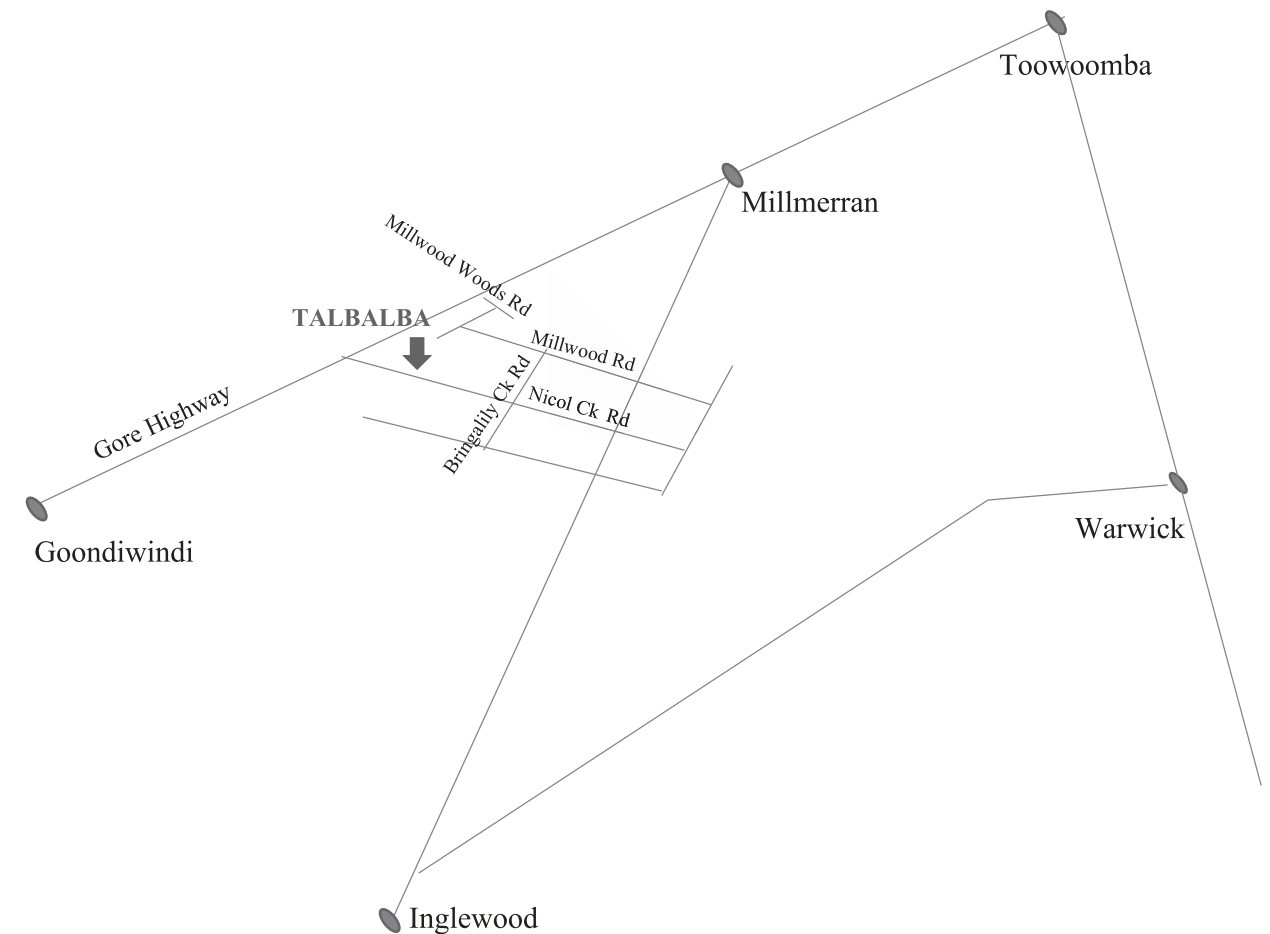
Directions: We are located at 1392 Nicol Creek Road, Bringalily, QLD.

From Millmerran head south towards Inglewood 25 km, turn right (West) at Nicol Ck Rd, continue 7km and Talbalba is on your right.

From Goondiwindi take Gore Highway head towards Millmerran 123 km, at Rifle Range turn right into Millwood Woods Rd 1.5 km then left into Millwood Road 6.5 km, right into Bringalily Creek Rd 4 km, right into Nicol Ck Rd, 4 km and Talbalba is on your right.

Signs will be displayed on sale day.

Mobile phone service is available.



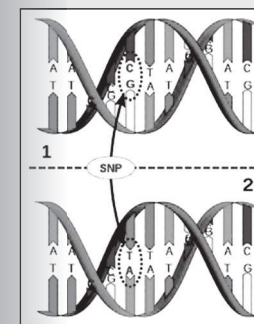
Inspection may be arranged prior to sale day by contacting the vendors or our agents. Visitors are always welcome. Inspection from 8am Sale day.

Delivery: Bulls will be delivered free to your door within 500km radius of "Delemere" or by prior arrangement with us. Please arrange Insurance for your purchase as all care will be taken but no responsibility.

Fertility: All bulls have been semen tested including Morphology by Brendan Coonan, Northern Artificial Breeding Service on 02/07/2020.

GENOMIC TESTING

All sires have had DNA collected and a 50 K, Low Density SNP produce by Neogen at Gatton.



This guarantees:

- Bulls with Genomics in traits observed (Breedplan) are sire verified and tested free of known genetic conditions.
- The accuracy of the EBVs will go to the next level with the addition of Genomic information.

Health: All bulls have been vaccinated for Tick Fever, 5 in 1, BEF (3 day sickness) and Vibrio. We recommend purchasers continue these vaccination programs with a yearly booster, All bulls tested Pestivirus (PI) negative by NSW Dept of Industry Laboratory and University of QLD Laboratory. No bulls have been hoof trimmed.

| Vaccination / Treatment history | |
|---------------------------------|----------------------------------|
| 5 in 1 | 26/06/2020 |
| Vibrio | 13/05/2020 and 26/06/2020 |
| BEF (3 day sickness) | 2 doses 2019, booster 30/07/2020 |
| Tick Fever Trivalent | 05/04/2020 |
| Cattle Guard backline drench | 26/06/2020 |

Tick Fever note:
Lot 12 treated with Imidox 05/04/2020 for severe reaction to Tick fever vaccine so no longer immune.

| Horn Status | |
|-------------|------------------------------------------------------------------------------------|
| H | Horned Animal (All horned bulls have been dehorned) |
| H# | Horned animal with poll blood in first 6 generations |
| HPR | Herd Performance Recorded |
| P | Polled |
| S | Poll animal with scurs (scurs have not been touched and usually are insignificant) |

Poll Test: The Australian Poll Gene Marker test is available from the Animal Genetics Laboratory at the University of Queensland and Zoetis Animal Genetics. Hair, blood, tissue or semen samples can all be used to perform the test.

The results will describe the percentage chance of the most likely genotype. The genotypes that are reported are homozygous polled (PP), heterozygous polled (PH), and homozygous horned (HH). The accuracy of the test result is reported alongside the most likely genotype. The accuracy will range from 90% to 99%. If the test does not return an informative result, the accuracy is less than 90%, the result will be returned as Not Determined (ND).

Homozygous Polled bulls will dehorn all of their progeny irrespective of the mother's horn status.

Heterozygous Polled bulls dehorn 75% to 100% of their progeny when used over Poll cows depending on the % of homozygous cows. They dehorn 50% of their progeny when used over Horned cows.

Handling your new bull: Our bulls are run in groups of about 20 in open paddocks and are not used to being on their own. While this does ensure that they can compete and perform in the paddock, it can make them nervous when they are transported individually. If your bull doesn't settle after acclimatising into a new mob please let us know.

Rebate: A rebate of 3% of the purchase price will be allowed to outside agents introducing buyers in writing 24 hours prior to the sale and settling on their behalf within 7 days from date of sale. Outside agents attending the sale in person with buyers will be eligible for a \$200 expenses reimbursement.

Insurance: Insurance representatives will be in attendance. Cover can be arranged from the fall of the hammer. There is no vendor insurance on Sale bulls.

GST is to be added onto the purchase price at the fall of the auctioneer's hammer.

Buyer's Instructions: All buyer's instructions must be in writing and no verbal instructions will be accepted. A buyer's instruction slip is included in the catalogue for your convenience.

Refreshments: Our local Kindon branch of ICPA , Isolated Children's Parents' Association, will be catering Morning Tea and Lunch at this year's sale as a fundraising event. On completion of the sale please join us for complimentary drinks.

Safety: All persons enter the bull pens at their own risk. Children under 14 to be accompanied by an adult and must not enter bull pens. Bulls are generally quiet to handle but Sale day is stressful and may cause unpredictable behaviour.

Disclaimer: Whilst all due care is taken the owners, employees, agents and sales staff accept no liability for any accidents that may occur to persons or property on Sale day.



Can't make the sale?

Purchase online in eight simple steps!

Log on to AuctionsPlus and bid on your phone, tablet or computer.

- 1 REGISTER ONLINE**
Free once off registration for all auctions.
- 2 COMPLETE BUYER INDUCTION**
The buyer induction will help you understand the roles and responsibilities of everyone on the AuctionsPlus system.
- 3 VIEW CATALOGUE**
View photos, videos, pedigrees and more.
- 4 ENTER AUCTION**
Log into the auction anytime, anywhere and bid on your mobile, tablet or computer.
- 5 AUTO BID**
Can't stay for the whole sale? Set your maximum bid on the lot that you want to purchase and let the computer bid for you.
- 6 CONTACT SELLING AGENT**
If successful, contact selling agent to arrange payment and delivery. The agent contact details will be available in the catalogue header.
- 7 PAYMENT**
Via the selling agent's terms and conditions.
- 8 DELIVERY**
Arrange transport of livestock at your expense.

*Contact AuctionsPlus on (02) 9262 4222
or email studsales@auctionsplus.com.au
or www.auctionsplus.com.au*

Check us out on:    

BREEDPLAN INFORMATION

Breedplan is a performance evaluation programme that describes the genetic merit of bulls for a number of commercially important traits. This genetic merit is given as an Estimated Breeding Value (EBV) for each trait. The EBVs in this catalogue are Hereford Group Breedplan EBVs and can be directly compared with Hereford Group Breedplan EBVs from other herds.

When comparing bulls, the EBV of each bull can be compared against the breed benchmark of zero (0), or against the current breed average EBV which are shown at the end of this entry.

Using EBVs to compare bulls:

- Birth wt EBV** – the lower the birthweight EBV, the lighter is the birthweight potential of the progeny.
- Milk EBV** – reflects extra calf weight at weaning due to the genetic influence a sire has on his daughters milking and mothering ability.
- 200 day wt** – indicates the relative weight advantage of a sire’s progeny at 8-10 months of age.
- 400 day wt** – indicates the relative weight advantage of a sire’s progeny at yearling age. This EBV is important if selecting sires for the domestic/supermarket trade.
- 600 day wt** – indicates the relative weight advantage of a sire’s progeny beyond yearling age. This EBV is important if selecting sires to breed steers for the grainfed export markets.
- EMA** – bulls with positive (+) EBVs are expected to produce progeny with larger eye muscle area than progeny with negative (-) EBVs.
- Fat Depth** – bulls with negative (-) EBVs are expected to produce progeny that will be relatively leaner than will bulls with a positive (+) EBV.
- Scrotal Size** – bulls with positive (+) EBVs are expected to produce male progeny that are relatively more fertile and to produce female progeny that reach puberty earlier than will the progeny of negative (-) EBV bulls.
- Carcase Yield (RBY%)** – bulls with positive EBVs for RBY% can be expected to produce progeny that are higher yielding @ 300kg HSCW than progeny from negative sires. Selection for this trait needs to be balanced with other growth and fertility traits.
- Intra-muscular fat % (IMF%)** – selection of bulls positive for IMF will improve marbling performance of their progeny. For a significant increase in marbling score, above average IMF sires need to be joined to above average IMF females.

Selection Indexes – Selection Indexes indicate the possible extra dollars earned per cow joined in self replacing herds targeting a particular market.

Northern Self-Replacing Index – Estimates the genetic differences between animals in net profitability per cow joined in a commercial self replacing herd targeting the domestic market.

This index is suitable for use by both straight bred Hereford herds and in cross breeding herds where Hereford bulls are being used over a Bos Indicus cow herd.

Daughters are retained for breeding.

Northern Baldy Terminal Index – Estimates the genetic difference between animals in net profitability per cow joined in a commercial crossbred herd using Hereford bulls over Bos Indicus females where all progeny are slaughtered.

| AVERAGE EBVs FOR 2018 BORN HEREFORD CALVES (HEREFORD GROUP BREEDPLAN) | | | | | | | | | | | | | | | | |
|-----------------------------------------------------------------------|-----------------------|-------------------------|---------------------------------------|-----------------|-----------------|---------------------------------------|-----------------|-----------|---------------------------------------|------------------------|-----------------|--------------------------------------|--------------|---------------|-----------------------|---------|
| Calving Ease DIR (%) | Calving Ease DTRS (%) | Gestation Length (days) | Birth Wt. (kg) | 200 Day Wt (kg) | 400 Day Wt (kg) | 600 Day Wt (kg) | Mat Cow Wt (kg) | Milk (kg) | Scrotal Size (cm) | Days to Calving (days) | Carcase Wt (kg) | Eye Muscle Area (sq cm) | Rib Fat (mm) | Rump Fat (mm) | Retail Beef Yield (%) | IMF (%) |
| +1.6 | +1.5 | -0.5 | +4.3 | +33 | +55 | +78 | +67 | +16 | +2.0 | -2.8 | +51 | +3.4 | +0.6 | +0.7 | +0.8 | +0.5 |
| \$Index values: | | | Southern Self-Replacing Index: +\$126 | | | Northern Self-Replacing Index: +\$111 | | | Southern Baldy Maternal Index: +\$126 | | | Northern Baldy Terminal Index: +\$93 | | | | |

Reference Sires



Days Executive K188 (PP)
\$45,000 sire owned with Injemira.
High growth sire excelling in fertility, muscle, CE daughters and docility.



Mawarra Emperor L336 (H)
Bin project sire
Low birth weight sire excelling in growth, milk and marbling.



Days Gallipoli L142 (PP)
Bin project sire.
Low birth weight sire, high calving ease sire excelling in carcase traits.



Talbalba AdvanceK 246 (H)
Outstanding Advance son sold to Ardrossan.
High in growth, milk and carcase traits.



Talbalba Wallace H83 (S)
High growth sire excelling in calving ease, fertility and marbling.



KCF Bennett Homeland C34 (PP)
Calving ease sire excelling in fertility and carcase traits.

Lot 1

TALBALBA EMPEROR P043 (AI) (H)

Tattoo: P043

Born: 16/08/2018

Rego No.: R5XP043

CHURCHILL SENSATION 028X (H)
CHURCHILL A1 ET (IMP USA) (H)
CHURCHILL LADY 6109S ET (H)
SIRE: MAWARRA EMPEROR (AI) (ET) (H)
COOTHARABA MAGNUM (H)
MAWARRA MINERVA 816 (AI) (ET) (H)
MAWARRA MINERVA 554 ET1 (AI) (ET) (H)

INJEMIRA ADVANCE C085 (H)
DEVON COURT ADVANCE F052 (H)
DEVON COURT LIONESS A207 (H)
DAM: TALBALBA CHOICE K47 (H)
BOWMONT STORM C115 (AI) (H)
TALBALBA CHOICE F132 (H)
TALBALBA CHOICE 89 (AI) (H)



A bull for the times. Genuine low birth weight sire with growth in the top 10% of the breed. Outstanding carcass data with top 10% muscle and top 1% marbling. Proven pedigree and reliable EBVs due to BIN participation by M Emperor. Stud sire. Semen retained for in herd use and 100 straws sold commercially.

| June 2020 Hereford GROUP BREEDPLAN | | | | | | | | | | | | | | | | |
|------------------------------------|--------|---------------------------------------|------|-----|-----|---------------------------------------|-----|------|------|---------------------------------------|------|------|------|---------------------------------------|-------|-------|
| CEDir | CEDtrs | GL | BW | 200 | 400 | 600 | MCW | MILK | SS | DC | C WT | EMA | RIB | RUMP | RBY % | IMF % |
| +2.1 | -2.3 | -0.8 | +3.7 | +36 | +67 | +98 | +81 | +21 | +1.0 | -0.9 | +70 | +5.5 | +0.4 | +0.3 | +1.2 | +2.0 |
| 41% | 30% | 74% | 72% | 67% | 67% | 66% | 60% | 46% | 76% | 32% | 56% | 50% | 54% | 58% | 52% | 55% |
| \$Index values: | | Southern Self-Replacing Index: +\$162 | | | | Northern Self-Replacing Index: +\$142 | | | | Southern Baldy Maternal Index: +\$171 | | | | Northern Baldy Terminal Index: +\$134 | | |

Traits Observed: GL,CE,BWT,200WT,400WT,SS,FAT,EMA,IMF,DOC,Genomics

Purchaser: _____ Price: \$ _____

Lot 2

TALBALBA EMPEROR P087 (H)

Tattoo: P087

Born: 02/09/2018

Rego No.: R5XP087

CHURCHILL SENSATION 028X (H)
CHURCHILL A1 ET (IMP USA) (H)
CHURCHILL LADY 6109S ET (H)
SIRE: MAWARRA EMPEROR (AI) (ET) (H)
COOTHARABA MAGNUM (H)
MAWARRA MINERVA 816 (AI) (ET) (H)
MAWARRA MINERVA 554 ET1 (AI) (ET) (H)

IRONBARK M428 HOT SHOT W264 (AI) (H)
TALBALBA WAVER (AI) (H)
TALBALBA MONICA A033 (H)
DAM: TALBALBA LENA J084 (AI) (H)
COOTHARABA MAGNUM (H)
TALBALBA LENA G047 (AI) (H)
TALBALBA LENA A063 (H)



P087 ticks a lot of the same boxes as Lot 1. They both go back to the US sire Sensation, who sets the standard for calving ease and marbling in North America. His dam is from G047 who also sired Advance K246, who we used by AI. Top 15% muscle. Top 1% marbling. Consistent bloodlines.

| June 2020 Hereford GROUP BREEDPLAN | | | | | | | | | | | | | | | | |
|------------------------------------|--------|---------------------------------------|------|-----|-----|---------------------------------------|-----|------|------|---------------------------------------|------|------|------|---------------------------------------|-------|-------|
| CEDir | CEDtrs | GL | BW | 200 | 400 | 600 | MCW | MILK | SS | DC | C WT | EMA | RIB | RUMP | RBY % | IMF % |
| +1.1 | +0.8 | -0.1 | +4.6 | +36 | +53 | +73 | +43 | +21 | +1.4 | -1.6 | +48 | +5.0 | +0.8 | +1.1 | +0.4 | +2.4 |
| 40% | 29% | 65% | 73% | 67% | 66% | 66% | 58% | 47% | 74% | 32% | 56% | 48% | 53% | 57% | 50% | 54% |
| \$Index values: | | Southern Self-Replacing Index: +\$139 | | | | Northern Self-Replacing Index: +\$121 | | | | Southern Baldy Maternal Index: +\$141 | | | | Northern Baldy Terminal Index: +\$102 | | |

Traits Observed: CE,BWT,200WT,400WT,SS,FAT,EMA,IMF,DOC,Genomics

Purchaser: _____ Price: \$ _____

Lot 3

TALBALBA ADVANCE P011 (AI) (H)

Tattoo: P011

Born: 16/08/2018

Rego No.: R5XP011

INJEMIRA ADVANCE C085 (H)
DEVON COURT ADVANCE F052 (H)
DEVON COURT LIONESS A207 (H)
SIRE: TALBALBA ADVANCE K246 (H)
COOTHARABA MAGNUM (H)
TALBALBA LENA G047 (AI) (H)
TALBALBA LENA A063 (H)

GLENDAN PARK STORM W134 (H)
BOWMONT STORM C115 (AI) (H)
BOWMONT L MINERVA Y314 (H)
DAM: TALBALBA CHERRY RIPE F026 (H)
INJEMIRA EXTRA Q405 (H)
TALBALBA CHERRY RIPE 66 (H)
TALBALBA CHERRY RIPE 54 (H)



Long, dark, slick skinned bull who looks like his Storm mother. Front paddock sire.

| June 2020 Hereford GROUP BREEDPLAN | | | | | | | | | | | | | | | | |
|------------------------------------|--------|--------------------------------------|------|-----|-----|--------------------------------------|-----|------|------|--------------------------------------|------|------|------|--------------------------------------|-------|-------|
| CEDir | CEDtrs | GL | BW | 200 | 400 | 600 | MCW | MILK | SS | DC | C WT | EMA | RIB | RUMP | RBY % | IMF % |
| -0.3 | -5.1 | +0.6 | +5.4 | +33 | +52 | +80 | +80 | +18 | +0.8 | +0.3 | +48 | +2.5 | -1.1 | -1.6 | +1.5 | +0.0 |
| 40% | 33% | 73% | 70% | 66% | 65% | 64% | 58% | 51% | 75% | 32% | 54% | 48% | 52% | 57% | 50% | 50% |
| \$Index values: | | Southern Self-Replacing Index: +\$90 | | | | Northern Self-Replacing Index: +\$68 | | | | Southern Baldy Maternal Index: +\$99 | | | | Northern Baldy Terminal Index: +\$84 | | |

Traits Observed: GL,CE,BWT,200WT,400WT,SS,FAT,EMA,IMF,DOC,Genomics

Purchaser: _____ Price: \$ _____

Lot 4

TALBALBA TALBALBA ADVANCE P051 (AI) (H)

Tattoo: P051

Born: 22/08/2018

Rego No.: R5XP051

INJEMIRA ADVANCE C085 (H)
DEVON COURT ADVANCE F052 (H)
DEVON COURT LIONESS A207 (H)
SIRE: TALBALBA ADVANCE K246 (H)
COOTHARABA MAGNUM (H)
TALBALBA LENA G047 (AI) (H)
TALBALBA LENA A063 (H)

COORA GOVERNOR U051 (AI) (H)
NORTH END X061 (H)
GVPC DOREEN R035 (H)
DAM: TALBALBA MONICA F023 (H)
WALLAN CREEK PACEMAKER Q207 (H)
BUNDARRA MONICA U3 (H)
BUNDARRA MONICA R77 (H)



Deep, soft, easy doing bull with marbling in the top 25% of the breed.

| June 2020 Hereford GROUP BREEDPLAN | | | | | | | | | | | | | | | | |
|------------------------------------|--------|---------------------------------------|------|-----|-----|--------------------------------------|-----|------|------|---------------------------------------|------|------|------|--------------------------------------|-------|-------|
| CEDir | CEDtrs | GL | BW | 200 | 400 | 600 | MCW | MILK | SS | DC | C WT | EMA | RIB | RUMP | RBY % | IMF % |
| -0.6 | -0.2 | +4.3 | +5.1 | +27 | +45 | +69 | +57 | +15 | +1.7 | -1.1 | +36 | +2.3 | -0.3 | -0.5 | +0.9 | +0.8 |
| 40% | 32% | 72% | 70% | 65% | 64% | 63% | 58% | 49% | 74% | 33% | 53% | 47% | 51% | 56% | 49% | 49% |
| \$Index values: | | Southern Self-Replacing Index: +\$103 | | | | Northern Self-Replacing Index: +\$84 | | | | Southern Baldy Maternal Index: +\$103 | | | | Northern Baldy Terminal Index: +\$75 | | |

Traits Observed: GL,CE,BWT,200WT,400WT,SS,FAT,EMA,IMF,DOC

Purchaser: _____ Price: \$ _____

Lot 5

TALBALBA ADVANCE P030 (H)

Tattoo: P030

Born: 12/08/2018

Rego No.: R5XP030

INJEMIRA ADVANCE C085 (H)
DEVON COURT ADVANCE F052 (H)
DEVON COURT LIONESS A207 (H)
SIRE: TALBALBA ADVANCE K246 (H)
COOTHARABA MAGNUM (H)
TALBALBA LENA G047 (AI) (H)
TALBALBA LENA A063 (H)

GLENDAN PARK STORM W134 (H)
BOWMONT STORM C115 (AI) (H)
BOWMONT L MINERVA Y314 (H)
DAM: TALBALBA CHOICE G140 (H)
BUNDARRA METEOR (AI) (H)
TALBALBA CHOICE 74 (AI) (H)
TALBALBA CHOICE 40 (AI) (H)

Thick Advance son from a top Storm cow. Half brothers have sold to \$13,000.

| June 2020 Hereford GROUP BREEDPLAN | | | | | | | | | | | | | | | | |
|------------------------------------|--------|--------------------------------------|------|-----|-----|--------------------------------------|-----|------|------|--------------------------------------|------|------|------|--------------------------------------|-------|-------|
| CEDir | CEDtrs | GL | BW | 200 | 400 | 600 | MCW | MILK | SS | DC | C WT | EMA | RIB | RUMP | RBY % | IMF % |
| -0.5 | -2.6 | -0.1 | +4.8 | +29 | +42 | +66 | +51 | +14 | +1.6 | -0.3 | +38 | +3.3 | +0.2 | +0.4 | +0.8 | +0.7 |
| 41% | 33% | 55% | 71% | 65% | 65% | 64% | 58% | 50% | 76% | 33% | 54% | 48% | 53% | 57% | 51% | 50% |
| \$Index values: | | Southern Self-Replacing Index: +\$96 | | | | Northern Self-Replacing Index: +\$81 | | | | Southern Baldy Maternal Index: +\$98 | | | | Northern Baldy Terminal Index: +\$73 | | |

Traits Observed: CE,BWT,200WT,400WT,SS,FAT,EMA,IMF,DOC,Genomics

Purchaser: _____ Price: \$ _____

Lot 6

TALBALBA EMPEROR P026 (AI) (H)

Tattoo: P026

Born: 10/08/2018

Rego No.: R5XP026

CHURCHILL SENSATION 028X (H)
CHURCHILL A1 ET (IMP USA) (H)
CHURCHILL LADY 6109S ET (H)
SIRE: MAWARRA EMPEROR (AI) (ET) (H)
COOTHARABA MAGNUM (H)
MAWARRA MINERVA 816 (AI) (ET) (H)
MAWARRA MINERVA 554 ET1 (AI) (ET) (H)

BUNDARRA ZAMBIA (H)
GLENWARRAH LISMORE MORE (H)
GLENWARRAH LIONESS 35 (H)
DAM: TALBALBA MONICA G045 (H)
FOXFORTH VALUABLE (H)
TALBALBA MONICA D061 (H)
BUNDARRA MONICA S4 (H)

Thick topped Emperor son with excellent carcase data. Top 10% muscle, 5% marbling. Mother is one of the good ones.

| June 2020 Hereford GROUP BREEDPLAN | | | | | | | | | | | | | | | | |
|------------------------------------|--------|---------------------------------------|------|-----|-----|---------------------------------------|-----|------|------|---------------------------------------|------|------|------|--------------------------------------|-------|-------|
| CEDir | CEDtrs | GL | BW | 200 | 400 | 600 | MCW | MILK | SS | DC | C WT | EMA | RIB | RUMP | RBY % | IMF % |
| -3.6 | +0.0 | -0.4 | +6.7 | +35 | +66 | +87 | +79 | +15 | +2.9 | -1.8 | +52 | +5.6 | +0.1 | +0.1 | +1.1 | +1.5 |
| 42% | 31% | 75% | 73% | 68% | 68% | 67% | 61% | 50% | 76% | 32% | 57% | 51% | 55% | 59% | 52% | 55% |
| \$Index values: | | Southern Self-Replacing Index: +\$130 | | | | Northern Self-Replacing Index: +\$113 | | | | Southern Baldy Maternal Index: +\$123 | | | | Northern Baldy Terminal Index: +\$91 | | |

Traits Observed: GL,CE,BWT,200WT,400WT,SS,FAT,EMA,IMF,DOC,Genomics

Purchaser: _____ Price: \$ _____

Lot 7

TALBALBA EXECUTIVE P039 (AI) (S)

Tattoo: P039

Born: 14/08/2018

Rego No.: R5XP039

ALLENDALE VAGABOND A74 (AI) (P)
ALLENDALE WATERHOUSE D1 (PP)
ALLENDALE MARLINE X185 (P)
SIRE: DAYS EXECUTIVE K168 (PP)
ALLENDALE TIPPERARY D13 (AI) (ET) (P)
DAYS SILVIA G13 (AI) (P)
DAYS SILVIA E30 (AI) (P)

SOUTH BUKALONG WALKER 6 (AI) (P)
SOUTH BUKALONG WALLACE 2 (P)
SOUTH BUKALONG VICTORIA 152 (P)
DAM: TALBALBA MINERVA G066 (AI) (P)
COOTHARABA MAGNUM (H)
TALBALBA MINERVA E069 (AI) (H)
BUNDARRA MINERVA W14 (AI) (H)



Well muscled sound structured Executive son with top 1% growth, 25% muscle and 20% marbling. P039 is a powerful individual who has exceptional calving ease. Use him to increase the weight and performance of your feeder cattle while improving the calving ability of your heifers.

| June 2020 Hereford GROUP BREEDPLAN | | | | | | | | | | | | | | | | |
|------------------------------------|--------|---------------------------------------|------|-----|-----|---------------------------------------|-----|------|------|---------------------------------------|------|------|------|---------------------------------------|-------|-------|
| CEDir | CEDtrs | GL | BW | 200 | 400 | 600 | MCW | MILK | SS | DC | C WT | EMA | RIB | RUMP | RBY % | IMF % |
| +1.8 | +4.2 | -1.5 | +6.3 | +46 | +79 | +115 | +79 | +21 | +2.8 | -1.2 | +70 | +4.2 | -0.6 | -0.9 | +1.9 | +0.9 |
| 48% | 41% | 76% | 74% | 69% | 68% | 68% | 63% | 55% | 78% | 40% | 59% | 54% | 57% | 61% | 55% | 57% |
| \$Index values: | | Southern Self-Replacing Index: +\$204 | | | | Northern Self-Replacing Index: +\$178 | | | | Southern Baldy Maternal Index: +\$208 | | | | Northern Baldy Terminal Index: +\$142 | | |

Traits Observed: GL,CE,BWT,200WT,400WT,SS,FAT,EMA,IMF,DOC,Genomics

Purchaser: _____ Price: \$ _____

Lot 8

TALBALBA EXECUTIVE P112 (P)

Tattoo: P112

Born: 13/09/2018

Rego No.: R5XP112

ALLENDALE VAGABOND A74 (AI) (P)
ALLENDALE WATERHOUSE D1 (PP)
ALLENDALE MARLINE X185 (P)
SIRE: DAYS EXECUTIVE K168 (PP)
ALLENDALE TIPPERARY D13 (AI) (ET) (P)
DAYS SILVIA G13 (AI) (P)
DAYS SILVIA E30 (AI) (P)

SOUTH BUKALONG WALKER 6 (AI) (P)
SOUTH BUKALONG WALLACE 2 (P)
SOUTH BUKALONG VICTORIA 152 (P)
DAM: TALBALBA CHOICE H43 (AI) (H#)
TALBALBA WAVER (AI) (H)
TALBALBA CHOICE F080 (AI) (H)
TALBALBA CHOICE D051 (H)



Same pedigree and similar performance to the last lot. Top 10% muscle, 10% marbling and 20% growth. Excellent fertility data. Complete sire.

| June 2020 Hereford GROUP BREEDPLAN | | | | | | | | | | | | | | | | |
|------------------------------------|--------|---------------------------------------|------|-----|-----|---------------------------------------|-----|------|------|---------------------------------------|------|------|------|---------------------------------------|-------|-------|
| CEDir | CEDtrs | GL | BW | 200 | 400 | 600 | MCW | MILK | SS | DC | C WT | EMA | RIB | RUMP | RBY % | IMF % |
| +1.3 | +4.8 | -3.1 | +5.0 | +38 | +68 | +91 | +60 | +14 | +4.0 | -3.3 | +58 | +5.3 | +1.2 | +1.8 | +1.2 | +1.3 |
| 46% | 39% | 64% | 73% | 68% | 68% | 67% | 62% | 54% | 77% | 38% | 58% | 52% | 56% | 60% | 54% | 55% |
| \$Index values: | | Southern Self-Replacing Index: +\$187 | | | | Northern Self-Replacing Index: +\$177 | | | | Southern Baldy Maternal Index: +\$181 | | | | Northern Baldy Terminal Index: +\$121 | | |

Traits Observed: CE,BWT,200WT,400WT,SS,FAT,EMA,IMF,DOC,Genomics

Purchaser: _____ Price: \$ _____

Lot 9

TALBALBA EXECUTIVE P171 (S)

Tattoo: P171

Born: 03/10/2018

Rego No.: R5XP171

ALLENDAL VAGABOND A74 (AI) (P)
ALLENDAL WATERHOUSE D1 (PP)
ALLENDAL MARLINE X185 (P)
SIRE: DAYS EXECUTIVE K168 (PP)
ALLENDAL TIPPERARY D13 (AI) (ET) (P)
DAYS SILVIA G13 (AI) (P)
DAYS SILVIA E30 (AI) (P)

TH 122 71I VICTOR 719T (IMP USA) (P)
TH 71U 719T MR HEREFORD 11X (IMP USA) (P)
TH 7N 45P RITA 71U (P)
DAM: TALBALBA MINERVA H44 (AI) (H#)
BOWMONT STORM C115 (AI) (H)
TALBALBA CHOICE F039 (H)
TALBALBA CHOICE 75 (AI) (H)

Younger bull with lots of growth (top 1%) and muscle (top 5%). Will also add marbling, milk and fertility. One of the good ones.

| June 2020 Hereford GROUP BREEDPLAN | | | | | | | | | | | | | | | | |
|-----------------------------------------------------------------|--------|---------------------------------------|------|-----|-----|---------------------------------------|-----|------|------|---------------------------------------|------|------|-----|---------------------------------------|-------|-------|
| CEDir | CEDtrs | GL | BW | 200 | 400 | 600 | MCW | MILK | SS | DC | C WT | EMA | RIB | RUMP | RBY % | IMF % |
| -0.3 | -0.9 | -3.7 | +6.4 | +46 | +82 | +118 | +98 | +25 | +3.4 | -1.3 | +75 | +6.5 | -1 | -1.3 | +2.8 | +0.0 |
| 45% | 37% | 63% | 73% | 67% | 67% | 66% | 61% | 52% | 76% | 35% | 56% | 50% | 53% | 57% | 51% | 54% |
| \$Index values: | | Southern Self-Replacing Index: +\$180 | | | | Northern Self-Replacing Index: +\$156 | | | | Southern Baldy Maternal Index: +\$184 | | | | Northern Baldy Terminal Index: +\$135 | | |
| Traits Observed: CE,BWT,200WT,400WT,SS,FAT,EMA,IMF,DOC,Genomics | | | | | | | | | | | | | | | | |

Purchaser: _____ Price: \$ _____

Lot 10

TALBALBA EXECUTIVE P040 (AI) (S)

Tattoo: P040

Born: 15/08/2018

Rego No.: R5XP040

ALLENDAL VAGABOND A74 (AI) (P)
ALLENDAL WATERHOUSE D1 (PP)
ALLENDAL MARLINE X185 (P)
SIRE: DAYS EXECUTIVE K168 (PP)
ALLENDAL TIPPERARY D13 (AI) (ET) (P)
DAYS SILVIA G13 (AI) (P)
DAYS SILVIA E30 (AI) (P)

COOTHARABA ELGIN 2 (H)
COOTHARABA MAGNUM (H)
COOTHARABA PAULINE 279 (H)
DAM: TALBALBA CHOICE G077 (AI) (H)
FOXFORTH VALUABLE (H)
TALBALBA CHOICE E009 (H)
BUNDARRA CHOICE Y20 (H)



Highest performing bull in this years catalogue. Top 1% growth and top 1% muscle. Deep bodied bull with a beautiful skin.

| June 2020 Hereford GROUP BREEDPLAN | | | | | | | | | | | | | | | | |
|--------------------------------------------------------------------|--------|---------------------------------------|------|-----|-----|---------------------------------------|------|------|------|---------------------------------------|------|------|------|---------------------------------------|-------|-------|
| CEDir | CEDtrs | GL | BW | 200 | 400 | 600 | MCW | MILK | SS | DC | C WT | EMA | RIB | RUMP | RBY % | IMF % |
| -7.5 | -0.1 | -0.3 | +8.5 | +48 | +89 | +126 | +106 | +21 | +3.6 | -1.8 | +81 | +7.6 | -0.6 | -0.6 | +2.8 | +0.5 |
| 47% | 41% | 75% | 73% | 68% | 68% | 68% | 63% | 54% | 77% | 38% | 58% | 53% | 56% | 60% | 54% | 56% |
| \$Index values: | | Southern Self-Replacing Index: +\$183 | | | | Northern Self-Replacing Index: +\$157 | | | | Southern Baldy Maternal Index: +\$167 | | | | Northern Baldy Terminal Index: +\$115 | | |
| Traits Observed: GL,CE,BWT,200WT,400WT,SS,FAT,EMA,IMF,DOC,Genomics | | | | | | | | | | | | | | | | |

Purchaser: _____ Price: \$ _____

Lot 11

TALBALBA EXECUTIVE P032 (AI) (P)

Tattoo: P032

Born: 12/08/2018

Rego No.: R5XP032

ALLENDAL VAGABOND A74 (AI) (P)
ALLENDAL WATERHOUSE D1 (PP)
ALLENDAL MARLINE X185 (P)
SIRE: DAYS EXECUTIVE K168 (PP)
ALLENDAL TIPPERARY D13 (AI) (ET) (P)
DAYS SILVIA G13 (AI) (P)
DAYS SILVIA E30 (AI) (P)

COOTHARABA MAGNUM (H)
TALBALBA ZEALOT (AI) (H)
TALBALBA CHERRY RIPE A160 (AI) (H)
DAM: TALBALBA CHOICE H182 (H)
BUNDARRA WALLY (H)
TALBALBA CHOICE C078 (H)
TALBALBA CHOICE 112 (H)



Growthy bull from a top cow. Top 20% muscle.

| June 2020 Hereford GROUP BREEDPLAN | | | | | | | | | | | | | | | | |
|--------------------------------------------------------------------|--------|---------------------------------------|------|-----|-----|--------------------------------------|-----|------|------|---------------------------------------|------|------|------|--------------------------------------|-------|-------|
| CEDir | CEDtrs | GL | BW | 200 | 400 | 600 | MCW | MILK | SS | DC | C WT | EMA | RIB | RUMP | RBY % | IMF % |
| -4 | +1.2 | -2.7 | +7.0 | +37 | +60 | +82 | +75 | +15 | +2.9 | -1.9 | +45 | +4.4 | -0.2 | +0.1 | +1.1 | +0.4 |
| 43% | 36% | 74% | 73% | 68% | 68% | 67% | 62% | 53% | 77% | 35% | 57% | 51% | 54% | 59% | 52% | 53% |
| \$Index values: | | Southern Self-Replacing Index: +\$114 | | | | Northern Self-Replacing Index: +\$97 | | | | Southern Baldy Maternal Index: +\$106 | | | | Northern Baldy Terminal Index: +\$75 | | |
| Traits Observed: GL,CE,BWT,200WT,400WT,SS,FAT,EMA,IMF,DOC,Genomics | | | | | | | | | | | | | | | | |

Purchaser: _____ Price: \$ _____

Lot 12

TALBALBA EXECUTIVE P022 (AI) (P)

Tattoo: P022

Born: 07/08/2018

Rego No.: R5XP022

ALLENDAL VAGABOND A74 (AI) (P)
ALLENDAL WATERHOUSE D1 (PP)
ALLENDAL MARLINE X185 (P)
SIRE: DAYS EXECUTIVE K168 (PP)
ALLENDAL TIPPERARY D13 (AI) (ET) (P)
DAYS SILVIA G13 (AI) (P)
DAYS SILVIA E30 (AI) (P)

SOUTH BUKALONG WALKER 6 (AI) (P)
SOUTH BUKALONG WALLACE 2 (P)
SOUTH BUKALONG VICTORIA 152 (P)
DAM: TALBALBA CHOICE H47 (AI) (H#)
FOXFORTH VALUABLE (H)
TALBALBA CHOICE F019 (AI) (H)
TALBALBA CHOICE 113 (H)



Used last spring over select cows. Low birth weight, moderate framed bull with lots of muscle (top 5%), marbling (top 30%) and strong calving ease data. Mother is a picture perfect cow.

| June 2020 Hereford GROUP BREEDPLAN | | | | | | | | | | | | | | | | |
|--------------------------------------------------------------------|--------|---------------------------------------|------|-----|-----|---------------------------------------|-----|------|------|---------------------------------------|------|------|------|---------------------------------------|-------|-------|
| CEDir | CEDtrs | GL | BW | 200 | 400 | 600 | MCW | MILK | SS | DC | C WT | EMA | RIB | RUMP | RBY % | IMF % |
| +1.7 | +3.9 | -2.6 | +4.0 | +37 | +59 | +82 | +67 | +19 | +2.6 | -3.5 | +58 | +6.2 | +0.6 | +1.0 | +1.9 | +0.7 |
| 47% | 40% | 76% | 74% | 69% | 68% | 67% | 63% | 55% | 77% | 39% | 58% | 53% | 56% | 60% | 54% | 56% |
| \$Index values: | | Southern Self-Replacing Index: +\$156 | | | | Northern Self-Replacing Index: +\$149 | | | | Southern Baldy Maternal Index: +\$156 | | | | Northern Baldy Terminal Index: +\$112 | | |
| Traits Observed: GL,CE,BWT,200WT,400WT,SS,FAT,EMA,IMF,DOC,Genomics | | | | | | | | | | | | | | | | |

Purchaser: _____ Price: \$ _____

Lot 13

TALBALBA GALLIPOLI P072 (P)

Tattoo: P072

Born: 30/08/2018

Rego No.: R5XP072

MELVILLE EXCEL E443 (P)
DAYS ELABORATE J59 (AI) (P)
DAYS CORA E38 (AI) (P)
SIRE: DAYS GALLIPOLI L142 (PP)
DAYS CALIBRE G74 (PP)
DAYS FANCY J76 (AI) (P)
DAYS FANCY F38 (AI) (P)

GLENWARRAH LISMORE MORE (H)
MAWARRA BLACK HEART (H)
MAWARRA DOREEN 300 (H)
DAM: TALBALBA CHERRY RIPE L031 (H)
BOWMONT STORM C115 (AI) (H)
TALBALBA CHERRY RIPE F026 (H)
TALBALBA CHERRY RIPE 66 (H)



Used last spring over heifers. Heavily muscled (top 1%) bull with excellent calving ease, all wrapped up in a dark soft skin.

| June 2020 Hereford GROUP BREEDPLAN | | | | | | | | | | | | | | | | |
|------------------------------------|--------|---------------------------------------|------|-----|-----|---------------------------------------|-----|------|------|---------------------------------------|------|------|------|---------------------------------------|-------|-------|
| CEDir | CEDtrs | GL | BW | 200 | 400 | 600 | MCW | MILK | SS | DC | C WT | EMA | RIB | RUMP | RBY % | IMF % |
| +4.8 | +1.2 | -2 | +4.7 | +32 | +55 | +80 | +81 | +9 | +2.0 | -2.1 | +58 | +7.9 | -0.6 | -0.5 | +3.2 | +0.1 |
| 42% | 30% | 61% | 73% | 67% | 67% | 65% | 58% | 48% | 76% | 32% | 56% | 49% | 54% | 58% | 51% | 55% |
| \$Index values: | | Southern Self-Replacing Index: +\$149 | | | | Northern Self-Replacing Index: +\$146 | | | | Southern Baldy Maternal Index: +\$157 | | | | Northern Baldy Terminal Index: +\$121 | | |

Traits Observed: CE,BWT,200WT,400WT,SS,FAT,EMA,IMF,DOC,Genomics

Purchaser: _____ Price: \$ _____

Lot 14

TALBALBA LAWLOIT P014 (AI) (S)

Tattoo: P014

Born: 03/08/2018

Rego No.: R5XP014

HARVIE TRAVELER 69T (IMP CAN) (P)
HARVIE HIGH ROLLER ET 66X (IMP CAN) (AI) (ET) (P)
HARVIE DAN MS FIREFLY 69S (P)
SIRE: OAK DOWNS LAWLOIT L75 (AI) (PP)
MARKOWEN VINCENT C66 (P)
OAK DOWNS RUBY F165 (P)
OAK DOWNS RUBY 105 (P)

ALLENDAL E ANZAC E114 (PP)
INJEMIRA ANZAC H006 (PP)
INJEMIRA MARINDA B028 (AI) (P)
DAM: TALBALBA MONICA L020 (AI) (P)
GLENWARRAH LISMORE MORE (H)
TALBALBA MONICA G045 (H)
TALBALBA MONICA D061 (H)



Used last spring over heifers. Low birth weight, high calving ease sire with outstanding muscle (top 1%). Top young mother.

| June 2020 Hereford GROUP BREEDPLAN | | | | | | | | | | | | | | | | |
|------------------------------------|--------|---------------------------------------|------|-----|-----|---------------------------------------|-----|------|------|---------------------------------------|------|------|------|---------------------------------------|-------|-------|
| CEDir | CEDtrs | GL | BW | 200 | 400 | 600 | MCW | MILK | SS | DC | C WT | EMA | RIB | RUMP | RBY % | IMF % |
| +8.2 | +4.6 | -2.2 | +2.4 | +31 | +61 | +82 | +77 | +16 | +2.8 | -2.7 | +65 | +6.5 | +0.7 | +1.1 | +1.5 | +0.5 |
| 40% | 29% | 75% | 71% | 67% | 67% | 64% | 58% | 47% | 76% | 31% | 54% | 48% | 52% | 56% | 50% | 51% |
| \$Index values: | | Southern Self-Replacing Index: +\$159 | | | | Northern Self-Replacing Index: +\$155 | | | | Southern Baldy Maternal Index: +\$177 | | | | Northern Baldy Terminal Index: +\$136 | | |

Traits Observed: GL,CE,BWT,200WT,400WT,SS,FAT,EMA,IMF,DOC,Genomics

Purchaser: _____ Price: \$ _____

Lot 15

TALBALBA THE HOFF P059 (AI) (P)

Tattoo: P059

Born: 27/08/2018

Rego No.: R5XP059

DRF JWR PRINCE VICTOR 71I (P)
TH 122 71I VICTOR 719T (IMP USA) (P)
KBCR 19D DOMINETTE 122 (P)
SIRE: H VICTOR 0136 (IMP USA) (P)
GO EXCEL L18 (P)
H LADY EXCELL 824 ET (P)
BR DM GOLDRIANNA 3001 ET (P)

GH NEON 17N (IMP CAN) (H)
MAWARRA TRAIL BLAZER (AI) (H)
MAWARRA MINERVA 554 ET1 (AI) (ET) (H)
DAM: TALBALBA MONICA E038 (AI) (H)
MOORLANDS GRAND NATIONAL V045 (AI) (H)
TALBALBA MONICA A033 (H)
BUNDARRA MONICA R94 (H)



Used last spring over select cows. Bull with muscle (top 10%) and sound structure from a top old cow.

| June 2020 Hereford GROUP BREEDPLAN | | | | | | | | | | | | | | | | |
|------------------------------------|--------|---------------------------------------|------|-----|-----|---------------------------------------|-----|------|------|---------------------------------------|------|------|------|---------------------------------------|-------|-------|
| CEDir | CEDtrs | GL | BW | 200 | 400 | 600 | MCW | MILK | SS | DC | C WT | EMA | RIB | RUMP | RBY % | IMF % |
| +0.6 | +0.9 | -3.1 | +5.6 | +39 | +62 | +84 | +64 | +18 | +2.4 | -2.3 | +59 | +5.5 | -0.7 | -1.2 | +2.6 | -0.2 |
| 46% | 36% | 75% | 73% | 68% | 68% | 67% | 61% | 57% | 75% | 34% | 57% | 51% | 54% | 58% | 52% | 54% |
| \$Index values: | | Southern Self-Replacing Index: +\$145 | | | | Northern Self-Replacing Index: +\$128 | | | | Southern Baldy Maternal Index: +\$143 | | | | Northern Baldy Terminal Index: +\$101 | | |

Traits Observed: GL,CE,BWT,200WT,400WT,SS,FAT,EMA,IMF,DOC,Genomics

Purchaser: _____ Price: \$ _____

Lot 16

TALBALBA EXECUTIVE P114 (PP)

Tattoo: P114

Born: 14/09/2018

Rego No.: R5XP114

ALLENDAL E VAGABOND A74 (AI) (P)
ALLENDAL E WATERHOUSE D1 (PP)
ALLENDAL E MARLINE X185 (P)
SIRE: DAYS EXECUTIVE K168 (PP)
ALLENDAL E TIPPERARY D13 (AI) (ET) (P)
DAYS SILVIA G13 (AI) (P)
DAYS SILVIA E30 (AI) (P)

SOUTH BUKALONG WALLACE 2 (P)
WIRRUNA FORT F382 (ET) (PP)
MOUNT DIFFICULT LORNA B123 (P)
DAM: TALBALBA MINERVA K66 (AI) (P)
TALBALBA ZEALOT (AI) (H)
TALBALBA MINERVA H196 (H)
TALBALBA MINERVA B174 (H)



Homozygous Poll. Deep bodied, soft bull with muscle in the top 20% and marbling in the top 30%. Strong fertility traits and CEDtrs to improve your cow herd performance.1

| June 2020 Hereford GROUP BREEDPLAN | | | | | | | | | | | | | | | | |
|------------------------------------|--------|---------------------------------------|------|-----|-----|---------------------------------------|-----|------|------|---------------------------------------|------|------|------|--------------------------------------|-------|-------|
| CEDir | CEDtrs | GL | BW | 200 | 400 | 600 | MCW | MILK | SS | DC | C WT | EMA | RIB | RUMP | RBY % | IMF % |
| -1.7 | +2.5 | -2.4 | +4.6 | +32 | +60 | +80 | +61 | +13 | +3.3 | -4.1 | +49 | +4.5 | +0.9 | +1.5 | +1.0 | +0.7 |
| 45% | 38% | 64% | 73% | 68% | 68% | 67% | 62% | 54% | 77% | 37% | 57% | 52% | 55% | 59% | 53% | 55% |
| \$Index values: | | Southern Self-Replacing Index: +\$149 | | | | Northern Self-Replacing Index: +\$137 | | | | Southern Baldy Maternal Index: +\$136 | | | | Northern Baldy Terminal Index: +\$89 | | |

Traits Observed: CE,BWT,200WT,400WT,SS,FAT,EMA,IMF,DOC,Genomics

Purchaser: _____ Price: \$ _____

Lot 17

TALBALBA EXECUTIVE P325 (S)

Tattoo: P325Born: 10/09/2018Rego No.: R5XP325

ALLENDAL VAGABOND A74 (AI) (P)
ALLENDAL WATERHOUSE D1 (PP)
ALLENDAL MARLINE X185 (P)
SIRE: DAYS EXECUTIVE K168 (PP)
ALLENDAL TIPPERARY D13 (AI) (ET) (P)
DAYS SILVIA G13 (AI) (P)
DAYS SILVIA E30 (AI) (P)



DEBARRY ROCKY C303 (P)
YAVENVAL FUNCTIONAL F273 (S)
YAVENVAL JULIET B136 (AI) (H)
DAM: TALBALBA CORISANDE J085 (P)
DEBARRY SULTAN 3 (P)
BELLCO CORISANDE A57 (P)
BELLCO CORISANDE V53 (P)

High growth sire (top 15%) with good carcass data and excellent fertility and calving ease traits. Soft growthy young bull.

| June 2020 Hereford GROUP BREEDPLAN | | | | | | | | | | | | | | | | |
|------------------------------------|--------|---------------------------------------|------|-----|-----|---------------------------------------|-----|------|------|---------------------------------------|------|------|------|---------------------------------------|-------|-------|
| CEDir | CEDtrs | GL | BW | 200 | 400 | 600 | MCW | MILK | SS | DC | C WT | EMA | RIB | RUMP | RBY % | IMF % |
| +1.7 | +2.5 | -0.8 | +7.1 | +37 | +62 | +93 | +88 | +13 | +2.6 | -1.6 | +50 | +4.3 | +0.1 | +0.2 | +1.4 | +0.4 |
| 41% | 35% | 57% | 65% | 65% | 66% | 65% | 61% | 52% | 76% | 34% | 57% | 50% | 54% | 58% | 52% | 53% |
| \$Index values: | | Southern Self-Replacing Index: +\$146 | | | | Northern Self-Replacing Index: +\$130 | | | | Southern Baldy Maternal Index: +\$151 | | | | Northern Baldy Terminal Index: +\$111 | | |

Traits Observed: CE,200WT,400WT,SS,FAT,EMA,IMF,DOC,Genomics

Purchaser: _____ Price: \$ _____

Lot 18

TALBALBA EXECUTIVE P069 (PP)

Tattoo: P069Born: 28/08/2018Rego No.: R5XP069

ALLENDAL VAGABOND A74 (AI) (P)
ALLENDAL WATERHOUSE D1 (PP)
ALLENDAL MARLINE X185 (P)
SIRE: DAYS EXECUTIVE K168 (PP)
ALLENDAL TIPPERARY D13 (AI) (ET) (P)
DAYS SILVIA G13 (AI) (P)
DAYS SILVIA E30 (AI) (P)



DEBARRY ROCKY C303 (P)
YAVENVAL FUNCTIONAL F273 (S)
YAVENVAL JULIET B136 (AI) (H)
DAM: TALBALBA CHOICE J096 (P)
NORTH END X061 (H)
TALBALBA CHOICE F111 (H)
TALBALBA CHOICE A082 (H)

Homozygous Poll. High performing bull with growth (top 5%), muscle (top 15%) and marbling (top 25%).

| June 2020 Hereford GROUP BREEDPLAN | | | | | | | | | | | | | | | | |
|------------------------------------|--------|---------------------------------------|------|-----|-----|---------------------------------------|-----|------|------|---------------------------------------|------|------|------|---------------------------------------|-------|-------|
| CEDir | CEDtrs | GL | BW | 200 | 400 | 600 | MCW | MILK | SS | DC | C WT | EMA | RIB | RUMP | RBY % | IMF % |
| -3.1 | +1.6 | -2.9 | +8.7 | +48 | +76 | +109 | +92 | +21 | +3.1 | -1.4 | +64 | +4.9 | +0.3 | +0.6 | +0.8 | +0.8 |
| 43% | 36% | 59% | 73% | 68% | 68% | 67% | 62% | 53% | 77% | 35% | 57% | 51% | 55% | 59% | 53% | 55% |
| \$Index values: | | Southern Self-Replacing Index: +\$154 | | | | Northern Self-Replacing Index: +\$128 | | | | Southern Baldy Maternal Index: +\$151 | | | | Northern Baldy Terminal Index: +\$107 | | |

Traits Observed: CE,BWT,200WT,400WT,SS,FAT,EMA,IMF,DOC,Genomics

Purchaser: _____ Price: \$ _____

Lot 19

TALBALBA EXECUTIVE P092 (PP)

Tattoo: P092Born: 13/09/2018Rego No.: R5XP092

ALLENDAL VAGABOND A74 (AI) (P)
ALLENDAL WATERHOUSE D1 (PP)
ALLENDAL MARLINE X185 (P)
SIRE: DAYS EXECUTIVE K168 (PP)
ALLENDAL TIPPERARY D13 (AI) (ET) (P)
DAYS SILVIA G13 (AI) (P)
DAYS SILVIA E30 (AI) (P)

SOUTH BUKALONG WALKER 6 (AI) (P)
SOUTH BUKALONG WALLACE 2 (P)
SOUTH BUKALONG VICTORIA 152 (P)
DAM: TALBALBA CHERRY RIPE G082 (AI) (P)
MAWARRA TRAIL BLAZER (AI) (H)
TALBALBA CHERRY RIPE E076 (AI) (H)
TALBALBA CHERRY RIPE A160 (AI) (H)

Homozygous Poll. Excellent carcass data with top 10% marbling and 35% muscle. Calving ease specialist.

| June 2020 Hereford GROUP BREEDPLAN | | | | | | | | | | | | | | | | |
|------------------------------------|--------|---------------------------------------|------|-----|-----|---------------------------------------|-----|------|------|---------------------------------------|------|------|------|---------------------------------------|-------|-------|
| CEDir | CEDtrs | GL | BW | 200 | 400 | 600 | MCW | MILK | SS | DC | C WT | EMA | RIB | RUMP | RBY % | IMF % |
| +5.1 | +5.3 | -3.7 | +4.4 | +39 | +57 | +78 | +57 | +16 | +2.4 | -2 | +51 | +3.9 | +0.7 | +1.3 | +0.7 | +1.2 |
| 46% | 40% | 64% | 67% | 66% | 67% | 66% | 62% | 53% | 76% | 39% | 58% | 53% | 56% | 60% | 54% | 56% |
| \$Index values: | | Southern Self-Replacing Index: +\$154 | | | | Northern Self-Replacing Index: +\$146 | | | | Southern Baldy Maternal Index: +\$164 | | | | Northern Baldy Terminal Index: +\$119 | | |

Traits Observed: CE,200WT,400WT,SS,FAT,EMA,IMF,DOC,Genomics

Purchaser: _____ Price: \$ _____

Lot 20

TALBALBA EXECUTIVE P164 (S)

Tattoo: P164Born: 29/09/2018Rego No.: R5XP164

ALLENDAL VAGABOND A74 (AI) (P)
ALLENDAL WATERHOUSE D1 (PP)
ALLENDAL MARLINE X185 (P)
SIRE: DAYS EXECUTIVE K168 (PP)
ALLENDAL TIPPERARY D13 (AI) (ET) (P)
DAYS SILVIA G13 (AI) (P)
DAYS SILVIA E30 (AI) (P)

SOUTH BUKALONG WALLACE 2 (P)
WIRRUNA FORT F382 (ET) (PP)
MOUNT DIFFICULT LORNA B123 (P)
DAM: TALBALBA CHOICE K128 (AI) (P)
BOWMONT STORM C115 (AI) (H)
TALBALBA CHOICE H110 (H)
TALBALBA CHOICE Z017 (H)

Deep, thick, easy doing type bull. Marbling top 30%.

| June 2020 Hereford GROUP BREEDPLAN | | | | | | | | | | | | | | | | |
|------------------------------------|--------|---------------------------------------|------|-----|-----|---------------------------------------|-----|------|------|---------------------------------------|------|------|------|--------------------------------------|-------|-------|
| CEDir | CEDtrs | GL | BW | 200 | 400 | 600 | MCW | MILK | SS | DC | C WT | EMA | RIB | RUMP | RBY % | IMF % |
| +0.4 | -0.9 | -1.7 | +4.9 | +37 | +60 | +85 | +70 | +18 | +2.1 | -2.8 | +51 | +2.8 | +0.2 | +0.4 | +0.6 | +0.7 |
| 46% | 39% | 64% | 67% | 66% | 67% | 66% | 62% | 53% | 76% | 37% | 57% | 52% | 55% | 59% | 53% | 55% |
| \$Index values: | | Southern Self-Replacing Index: +\$135 | | | | Northern Self-Replacing Index: +\$115 | | | | Southern Baldy Maternal Index: +\$133 | | | | Northern Baldy Terminal Index: +\$98 | | |

Traits Observed: CE,200WT,400WT,SS,FAT,EMA,IMF,DOC,Genomics

Purchaser: _____ Price: \$ _____

Lot 21

TALBALBA THE HOFF P054 (AI) (S)

Tattoo: P054

Born: 25/08/2018

Rego No.: R5XP054

DRF JWR PRINCE VICTOR 711 (P)
TH 122 711 VICTOR 719T (IMP USA) (P)
KBCR 19D DOMINETTE 122 (P)
SIRE: H VICTOR 0136 (IMP USA) (P)
GO EXCEL L18 (P)
H LADY EXCELL 824 ET (P)
BR DM GOLDRIANNA 3001 ET (P)

SOUTH BUKALONG WALKER 6 (AI) (P)
SOUTH BUKALONG WALLACE 2 (P)
SOUTH BUKALONG VICTORIA 152 (P)
DAM: TALBALBA MINERVA G120 (AI) (H#)
MAWARRA TRAIL BLAZER (AI) (H)
TALBALBA MINERVA E077 (AI) (H)
BUNDARRA MINERVA R100 (H)



Low birth weight bull with exceptional calving ease and muscle (top 5%). We kept a share in his brother, M035, and he is breeding well. A half brother in the weaners is one of the best and will probably have some cows this spring. Consistent, high performing cattle.

| June 2020 Hereford GROUP BREEDPLAN | | | | | | | | | | | | | | | | |
|------------------------------------|--------|---------------------------------------|------|-----|-----|---------------------------------------|-----|------|------|---------------------------------------|------|------|------|---------------------------------------|-------|-------|
| CEDir | CEDtrs | GL | BW | 200 | 400 | 600 | MCW | MILK | SS | DC | C WT | EMA | RIB | RUMP | RBY % | IMF % |
| +8.2 | +6.7 | -1.4 | +3.7 | +37 | +61 | +84 | +51 | +17 | +1.6 | -1.1 | +67 | +6.0 | -0.6 | -1.2 | +2.9 | +0.1 |
| 46% | 36% | 76% | 73% | 69% | 68% | 67% | 61% | 57% | 77% | 37% | 57% | 52% | 56% | 59% | 53% | 55% |
| \$Index values: | | Southern Self-Replacing Index: +\$181 | | | | Northern Self-Replacing Index: +\$169 | | | | Southern Baldy Maternal Index: +\$198 | | | | Northern Baldy Terminal Index: +\$137 | | |

Traits Observed: GL,CE,BWT,200WT,400WT,SS,FAT,EMA,IMF,DOC,Genomics

Purchaser: _____ Price: \$ _____

Lot 22

TALBALBA EXECUTIVE P018 (AI) (P)

Tattoo: P018

Born: 04/08/2018

Rego No.: R5XP018

ALLENDAL VAGABOND A74 (AI) (P)
ALLENDAL WATERHOUSE D1 (PP)
ALLENDAL MARLINE X185 (P)
SIRE: DAYS EXECUTIVE K168 (PP)
ALLENDAL TIPPERARY D13 (AI) (ET) (P)
DAYS SILVIA G13 (AI) (P)
DAYS SILVIA E30 (AI) (P)

COORA GOVERNOR U051 (AI) (H)
NORTH END X061 (H)
GVPC DOREEN R035 (H)
DAM: TALBALBA LIONESS E170 (H)
BUNDARRA WALLY (H)
BUNDARRA LIONESS Z81 (H)
BUNDARRA LIONESS N81 (H)



Deep bodied, easy doing bull with growth in the top 10%. He has very short gestation length and strong CE data to improve the functionality of your cow herd.

| June 2020 Hereford GROUP BREEDPLAN | | | | | | | | | | | | | | | | |
|------------------------------------|--------|---------------------------------------|------|-----|-----|---------------------------------------|-----|------|------|---------------------------------------|------|------|------|---------------------------------------|-------|-------|
| CEDir | CEDtrs | GL | BW | 200 | 400 | 600 | MCW | MILK | SS | DC | C WT | EMA | RIB | RUMP | RBY % | IMF % |
| +1.6 | +5.3 | -4.2 | +6.8 | +37 | +66 | +97 | +92 | +15 | +3.9 | -0.5 | +55 | +4.0 | -1.4 | -2.2 | +2.1 | +0.2 |
| 46% | 38% | 74% | 73% | 68% | 68% | 67% | 62% | 56% | 77% | 38% | 58% | 52% | 56% | 60% | 54% | 56% |
| \$Index values: | | Southern Self-Replacing Index: +\$146 | | | | Northern Self-Replacing Index: +\$124 | | | | Southern Baldy Maternal Index: +\$156 | | | | Northern Baldy Terminal Index: +\$113 | | |

Traits Observed: GL,CE,BWT,200WT,400WT,SS,FAT,EMA,IMF,DOC,Genomics

Purchaser: _____ Price: \$ _____

Lot 23

TALBALBA EXECUTIVE P020 (HPR) (AI) (S)

Tattoo: P020

Born: 04/08/2018

Rego No.: R5XP020

ALLENDAL VAGABOND A74 (AI) (P)
ALLENDAL WATERHOUSE D1 (PP)
ALLENDAL MARLINE X185 (P)
SIRE: DAYS EXECUTIVE K168 (PP)
ALLENDAL TIPPERARY D13 (AI) (ET) (P)
DAYS SILVIA G13 (AI) (P)
DAYS SILVIA E30 (AI) (P)

COOTHARABA ELGIN 2 (H)
COOTHARABA MAGNUM (H)
COOTHARABA PAULINE 279 (H)
DAM: TALBALBA COM G030 (HPR) (AI) (H#)
TALBALBA QUIVER (H)
TALBALBA COM Z998 (HPR) (H#)



Easy doing, moderate framed bull with muscle (top 1%). CE and fertility improver.

| June 2020 Hereford GROUP BREEDPLAN | | | | | | | | | | | | | | | | |
|------------------------------------|--------|---------------------------------------|------|-----|-----|---------------------------------------|-----|------|------|---------------------------------------|------|------|------|--------------------------------------|-------|-------|
| CEDir | CEDtrs | GL | BW | 200 | 400 | 600 | MCW | MILK | SS | DC | C WT | EMA | RIB | RUMP | RBY % | IMF % |
| +0.8 | +1.5 | -4.5 | +5.2 | +32 | +54 | +77 | +72 | +13 | +2.8 | -1.2 | +52 | +7.3 | -0.7 | -0.6 | +2.9 | -0.1 |
| 46% | 39% | 75% | 73% | 68% | 68% | 67% | 62% | 55% | 77% | 37% | 57% | 52% | 55% | 60% | 53% | 55% |
| \$Index values: | | Southern Self-Replacing Index: +\$129 | | | | Northern Self-Replacing Index: +\$122 | | | | Southern Baldy Maternal Index: +\$132 | | | | Northern Baldy Terminal Index: +\$98 | | |

Traits Observed: GL,CE,BWT,200WT,400WT,SS,FAT,EMA,IMF,DOC,Genomics

Purchaser: _____ Price: \$ _____

Lot 24

TALBALBA EXECUTIVE P116 (PP)

Tattoo: P116

Born: 14/09/2018

Rego No.: R5XP116

ALLENDAL VAGABOND A74 (AI) (P)
ALLENDAL WATERHOUSE D1 (PP)
ALLENDAL MARLINE X185 (P)
SIRE: DAYS EXECUTIVE K168 (PP)
ALLENDAL TIPPERARY D13 (AI) (ET) (P)
DAYS SILVIA G13 (AI) (P)
DAYS SILVIA E30 (AI) (P)

TH 122 711 VICTOR 719T (IMP USA) (P)
TH 71U 719T MR HEREFORD 11X (IMP USA) (P)
TH 7N 45P RITA 71U (P)
DAM: TALBALBA CHOICE J126 (AI) (P)
BOWMONT STORM C115 (AI) (H)
TALBALBA CHOICE G167 (H)
TALBALBA A041 (AI) (H)

Homozygous Poll. Very thick, muscular (top 5%), bull with growth in the top 25%.

| June 2020 Hereford GROUP BREEDPLAN | | | | | | | | | | | | | | | | |
|------------------------------------|--------|---------------------------------------|------|-----|-----|---------------------------------------|-----|------|------|---------------------------------------|------|------|------|--------------------------------------|-------|-------|
| CEDir | CEDtrs | GL | BW | 200 | 400 | 600 | MCW | MILK | SS | DC | C WT | EMA | RIB | RUMP | RBY % | IMF % |
| -3.6 | -3 | -2.5 | +6.3 | +39 | +64 | +89 | +80 | +19 | +1.6 | -1.2 | +56 | +6.0 | -0.5 | -0.6 | +2.7 | -1 |
| 44% | 37% | 62% | 73% | 68% | 68% | 67% | 62% | 52% | 77% | 35% | 57% | 52% | 55% | 60% | 53% | 55% |
| \$Index values: | | Southern Self-Replacing Index: +\$118 | | | | Northern Self-Replacing Index: +\$102 | | | | Southern Baldy Maternal Index: +\$114 | | | | Northern Baldy Terminal Index: +\$83 | | |

Traits Observed: CE,BWT,200WT,400WT,SS,FAT,EMA,IMF,DOC,Genomics

Purchaser: _____ Price: \$ _____

Lot 25

TALBALBA EXECUTIVE P128 (P)

Tattoo: P128

Born: 19/09/2018

Rego No.: R5XP128

ALLENDALE VAGABOND A74 (AI) (P)
ALLENDALE WATERHOUSE D1 (PP)
ALLENDALE MARLINE X185 (P)
SIRE: DAYS EXECUTIVE K168 (PP)
ALLENDALE TIPPERARY D13 (AI) (ET) (P)
DAYS SILVIA G13 (AI) (P)
DAYS SILVIA E30 (AI) (P)

MONREID P EXPRESS X001 ET1 (AI) (ET) (H)
COOTHARABA MENDEZ (H)
COOTHARABA SINCERITY 15 (H)
DAM: TALBALBA CHERRY RIPE H89 (H)
BUNDARRA WALLY (H)
TALBALBA CHERRY RIPE D003 (H)
TALBALBA CHERRY RIPE 62 (H)



Top 15% muscle and top 25% growth.

| June 2020 Hereford GROUP BREEDPLAN | | | | | | | | | | | | | | | | |
|------------------------------------|--------|---------------------------------------|------|-----|-----|---------------------------------------|-----|------|------|---------------------------------------|------|------|-----|--------------------------------------|-------|-------|
| CEDir | CEDtrs | GL | BW | 200 | 400 | 600 | MCW | MILK | SS | DC | C WT | EMA | RIB | RUMP | RBY % | IMF % |
| -0.7 | +1.9 | -2.4 | +5.8 | +36 | +62 | +89 | +84 | +16 | +2.1 | -1.2 | +55 | +5.0 | -1 | -1.2 | +2.0 | +0.3 |
| 45% | 37% | 58% | 73% | 68% | 68% | 67% | 62% | 54% | 77% | 35% | 57% | 52% | 55% | 60% | 53% | 55% |
| \$Index values: | | Southern Self-Replacing Index: +\$132 | | | | Northern Self-Replacing Index: +\$114 | | | | Southern Baldy Maternal Index: +\$134 | | | | Northern Baldy Terminal Index: +\$99 | | |

Traits Observed: CE,BWT,200WT,400WT,SS,FAT,EMA,IMF,DOC,Genomics

Purchaser: _____ Price: \$ _____

Lot 26

TALBALBA LAWLOIT P037 (AI) (S)

Tattoo: P037

Born: 13/08/2018

Rego No.: R5XP037

HARVIE TRAVELER 69T (IMP CAN) (P)
HARVIE HIGH ROLLER ET 66X (IMP CAN) (AI) (ET) (P)
HARVIE DAN MS FIREFLY 69S (P)
SIRE: OAK DOWNS LAWLOIT L75 (AI) (PP)
MARKOWEN VINCENT C66 (P)
OAK DOWNS RUBY F165 (P)
OAK DOWNS RUBY 105 (P)

BUNDARRA WALLY (H)
BUNDARRA ZAY (H)
BUNDARRA MINERVA V29 (H)
DAM: JINDALEE DOREEN E020 (H)
SMITHSTON WEE DRAM ET1 (AI) (ET) (H)
JINDALEE DOREEN A001 (H)
SMITHSTON DOREEN X058 (H)

Growthy bull with top 10% muscle and strong CE data.

| June 2020 Hereford GROUP BREEDPLAN | | | | | | | | | | | | | | | | |
|------------------------------------|--------|---------------------------------------|------|-----|-----|---------------------------------------|-----|------|------|---------------------------------------|------|------|------|---------------------------------------|-------|-------|
| CEDir | CEDtrs | GL | BW | 200 | 400 | 600 | MCW | MILK | SS | DC | C WT | EMA | RIB | RUMP | RBY % | IMF % |
| +3.7 | +1.1 | -0.2 | +5.1 | +34 | +56 | +84 | +77 | +14 | +2.0 | -0.9 | +56 | +5.4 | +0.5 | +0.8 | +1.4 | +0.0 |
| 39% | 29% | 73% | 71% | 66% | 65% | 63% | 55% | 49% | 74% | 30% | 52% | 45% | 49% | 53% | 47% | 48% |
| \$Index values: | | Southern Self-Replacing Index: +\$134 | | | | Northern Self-Replacing Index: +\$123 | | | | Southern Baldy Maternal Index: +\$145 | | | | Northern Baldy Terminal Index: +\$110 | | |

Traits Observed: GL,CE,BWT,200WT,400WT,SS,FAT,EMA,IMF,DOC,Genomics

Purchaser: _____ Price: \$ _____

Lot 27

TALBALBA KELSO P133 (AI) (P)

Tattoo: P133

Born: 19/09/2018

Rego No.: R5XP133

QUAMBY PLAINS STOCKMASTER Y118 (P)
WIRRUNA FLETCHER F214 (P)
WIRRUNA LAST DAY B16 (AI) (H#)
SIRE: WIRRUNA KELSO K23 (AI) (PP)
WIRRUNA EDGEWATER E371 (AI) (ET) (P)
WIRRUNA DOREEN G350 (P)
WIRRUNA DOREEN D31 (AI) (P)

ALLENDALE ANZAC E114 (PP)
INJEMIRA ANZAC AI J188 (AI) (PP)
INJEMIRA PATTIE D119 (P)
DAM: TALBALBA MINERVA M133 (P)
BOWMONT STORM C115 (AI) (H)
TALBALBA MINERVA H314 (H)
TALBALBA MINERVA C091 (AI) (H)

Correct, easy doing bull with super data set. Top 15% growth, top 15% muscle, top 10% marbling with outstanding calving ease. To top off the package he has very short GL and strongly negative days to calving. Heifers calf.

| June 2020 Hereford GROUP BREEDPLAN | | | | | | | | | | | | | | | | |
|------------------------------------|--------|---------------------------------------|------|-----|-----|---------------------------------------|-----|------|------|---------------------------------------|------|------|------|---------------------------------------|-------|-------|
| CEDir | CEDtrs | GL | BW | 200 | 400 | 600 | MCW | MILK | SS | DC | C WT | EMA | RIB | RUMP | RBY % | IMF % |
| +5.8 | +3.8 | -5.2 | +6.1 | +38 | +66 | +95 | +92 | +13 | +1.5 | -5.1 | +61 | +4.7 | +1.8 | +2.2 | -0.2 | +1.6 |
| 45% | 34% | 72% | 71% | 66% | 66% | 65% | 60% | 50% | 75% | 36% | 55% | 49% | 54% | 58% | 51% | 53% |
| \$Index values: | | Southern Self-Replacing Index: +\$175 | | | | Northern Self-Replacing Index: +\$160 | | | | Southern Baldy Maternal Index: +\$180 | | | | Northern Baldy Terminal Index: +\$134 | | |

Traits Observed: GL,CE,BWT,200WT,400WT,SS,FAT,EMA,IMF,DOC,Genomics

Purchaser: _____ Price: \$ _____

Lot 28

TALBALBA THE HOFF P159 (S)

Tattoo: P159

Born: 27/09/2018

Rego No.: R5XP159

TH 122 71I VICTOR 719T (IMP USA) (P)
H VICTOR 0136 (IMP USA) (P)
H LADY EXCELL 824 ET (P)
SIRE: TALBALBA THE HOFF M044 (AI) (PP)
SOUTH BUKALONG WALLACE 2 (P)
TALBALBA CHERRY RIPE G082 (AI) (P)
TALBALBA CHERRY RIPE E076 (AI) (H)

TH 122 71I VICTOR 719T (IMP USA) (P)
H VICTOR 0136 (IMP USA) (P)
H LADY EXCELL 824 ET (P)
DAM: TALBALBA CHOICE M032 (AI) (P)
NORTH END X061 (H)
TALBALBA CHOICE F111 (H)
TALBALBA CHOICE A082 (H)



Very low birth weight heifer bull who still has muscle (top 35%). Thick, well made bull with a good skin. Heifers calf.

| June 2020 Hereford GROUP BREEDPLAN | | | | | | | | | | | | | | | | |
|------------------------------------|--------|---------------------------------------|------|-----|-----|---------------------------------------|-----|------|------|---------------------------------------|------|------|------|---------------------------------------|-------|-------|
| CEDir | CEDtrs | GL | BW | 200 | 400 | 600 | MCW | MILK | SS | DC | C WT | EMA | RIB | RUMP | RBY % | IMF % |
| +9.1 | +5.7 | -2.3 | +0.9 | +26 | +43 | +61 | +38 | +15 | +1.7 | -1.5 | +49 | +3.8 | -0.4 | -0.7 | +2.0 | -0.1 |
| 37% | 27% | 60% | 71% | 65% | 65% | 63% | 58% | 48% | 76% | 31% | 52% | 48% | 52% | 56% | 49% | 49% |
| \$Index values: | | Southern Self-Replacing Index: +\$138 | | | | Northern Self-Replacing Index: +\$131 | | | | Southern Baldy Maternal Index: +\$157 | | | | Northern Baldy Terminal Index: +\$112 | | |

Traits Observed: CE,BWT,200WT,400WT,SS,FAT,EMA,IMF,DOC,Genomics

Purchaser: _____ Price: \$ _____


Lot 29

TALBALBA THE HOFF P126 (PP)

Tattoo: P126Born: 19/09/2018Rego No.: R5XP126

TH 122 71I VICTOR 719T (IMP USA) (P)
H VICTOR 0136 (IMP USA) (P)
H LADY EXCELL 824 ET (P)
SIRE: TALBALBA THE HOFF M044 (AI) (PP)
SOUTH BUKALONG WALLACE 2 (P)
TALBALBA CHERRY RIPE G082 (AI) (P)
TALBALBA CHERRY RIPE E076 (AI) (H)

ALLENDAL E ANZAC E114 (PP)
INJEMIRA ANZAC AI J188 (AI) (PP)
INJEMIRA PATTIE D119 (P)
DAM: TALBALBA CHOICE M172 (P)
COOTHARABA MAGNUM (H)
TALBALBA CHOICE D032 (AI) (H)
TALBALBA CHOICE A025 (AI) (H)



Homozygous Poll. Very muscular (top 10%) Hoff son with growth in the top 5% and positive calving ease. Big testicles and short days to calving to boost herd fertility. Heifers calf.

| June 2020 Hereford GROUP BREEDPLAN | | | | | | | | | | | | | | | | |
|-----------------------------------------------------------------|--------|---------------------------------------|------|-----|-----|---------------------------------------|-----|------|------|---------------------------------------|------|------|------|---------------------------------------|-------|-------|
| CEDir | CEDtrs | GL | BW | 200 | 400 | 600 | MCW | MILK | SS | DC | C WT | EMA | RIB | RUMP | RBY % | IMF % |
| +1.6 | +1.7 | -1.6 | +5.7 | +41 | +73 | +104 | +87 | +21 | +4.7 | -3.7 | +73 | +5.5 | +0.2 | +0.1 | +2.3 | +0.2 |
| 37% | 29% | 54% | 69% | 63% | 63% | 61% | 56% | 45% | 75% | 30% | 51% | 46% | 50% | 55% | 48% | 48% |
| \$Index values: | | Southern Self-Replacing Index: +\$181 | | | | Northern Self-Replacing Index: +\$164 | | | | Southern Baldy Maternal Index: +\$180 | | | | Northern Baldy Terminal Index: +\$129 | | |
| Traits Observed: CE,BWT,200WT,400WT,SS,FAT,EMA,IMF,DOC,Genomics | | | | | | | | | | | | | | | | |

Purchaser: _____ Price: \$ _____

Lot 30

TALBALBA HOMELAND P123 (AI) (S)

Tattoo: P123Born: 16/09/2018Rego No.: R5XP123

SHF WONDER M326 W18 ET (P)
NJW 73S W18 HOMETOWN 10Y (IMP USA) (P)
NJW P606 72N DAYDREAM 73S (P)
SIRE: KCF BENNETT HOMELAND C34 (IMP USA) (PP)
EFBEEF SCHU-LAR PROFICIENT N093 (IMP USA) (P)
KCF MISS PROFICIENT A47 (P)
KCF MISS REVOLUTION Y102 (ET) (P)

SOUTH BUKALONG WALLACE 2 (P)
TALBALBA WALLACE H83 (AI) (S)
TALBALBA LIONESS F066 (H)
DAM: TALBALBA CHOICE M214 (H#)
BOWMONT STORM C115 (AI) (H)
TALBALBA CHOICE H08 (H)
TALBALBA CHOICE D105 (H)

Calving ease bull with good structure and marbling in the top 20% of the breed. His sire produced the \$55,000 bull at Wodonga this year. Heifers calf.

| June 2020 Hereford GROUP BREEDPLAN | | | | | | | | | | | | | | | | |
|--------------------------------------------------------------------|--------|---------------------------------------|------|-----|-----|---------------------------------------|-----|------|------|---------------------------------------|------|------|------|---------------------------------------|-------|-------|
| CEDir | CEDtrs | GL | BW | 200 | 400 | 600 | MCW | MILK | SS | DC | C WT | EMA | RIB | RUMP | RBY % | IMF % |
| +4.1 | +3.6 | -3 | +4.5 | +37 | +61 | +87 | +77 | +19 | +2.2 | -3.3 | +57 | +3.1 | +0.6 | +0.3 | +0.4 | +0.9 |
| 41% | 30% | 72% | 70% | 65% | 64% | 62% | 55% | 42% | 75% | 30% | 52% | 46% | 51% | 55% | 48% | 49% |
| \$Index values: | | Southern Self-Replacing Index: +\$148 | | | | Northern Self-Replacing Index: +\$128 | | | | Southern Baldy Maternal Index: +\$155 | | | | Northern Baldy Terminal Index: +\$115 | | |
| Traits Observed: GL,CE,BWT,200WT,400WT,SS,FAT,EMA,IMF,DOC,Genomics | | | | | | | | | | | | | | | | |

Purchaser: _____ Price: \$ _____

22

Lot 31

TALBALBA HOMELAND P085 (AI) (PP)

Tattoo: P085Born: 04/09/2018Rego No.: R5XP085

SHF WONDER M326 W18 ET (P)
NJW 73S W18 HOMETOWN 10Y (IMP USA) (P)
NJW P606 72N DAYDREAM 73S (P)
SIRE: KCF BENNETT HOMELAND C34 (IMP USA) (PP)
EFBEEF SCHU-LAR PROFICIENT N093 (IMP USA) (P)
KCF MISS PROFICIENT A47 (P)
KCF MISS REVOLUTION Y102 (ET) (P)

TYCOLAH JOVIAL F77 (PP)
MAWARRA MUSTANG (AI) (ET) (PP)
DEBARRY TABITHA Y177 (P)
DAM: TALBALBA ELLE M013 (P)
KIDMAN THE DON Y220 (P)
KENROY ELLE (AI) (P)
KENROY ELLE E07 (AI) (H)

Homozygous Poll. Heifers calf.

| June 2020 Hereford GROUP BREEDPLAN | | | | | | | | | | | | | | | | |
|--------------------------------------------------------------------|--------|---------------------------------------|------|-----|-----|--------------------------------------|-----|------|------|---------------------------------------|------|------|------|--------------------------------------|-------|-------|
| CEDir | CEDtrs | GL | BW | 200 | 400 | 600 | MCW | MILK | SS | DC | C WT | EMA | RIB | RUMP | RBY % | IMF % |
| -1 | +2.4 | +0.8 | +4.5 | +33 | +53 | +77 | +75 | +15 | +3.0 | -3.7 | +48 | +2.6 | +0.6 | +0.0 | +0.3 | +0.1 |
| 42% | 30% | 73% | 70% | 65% | 65% | 63% | 55% | 42% | 75% | 30% | 52% | 46% | 51% | 55% | 48% | 49% |
| \$Index values: | | Southern Self-Replacing Index: +\$111 | | | | Northern Self-Replacing Index: +\$92 | | | | Southern Baldy Maternal Index: +\$107 | | | | Northern Baldy Terminal Index: +\$75 | | |
| Traits Observed: GL,CE,BWT,200WT,400WT,SS,FAT,EMA,IMF,DOC,Genomics | | | | | | | | | | | | | | | | |

Purchaser: _____ Price: \$ _____


Lot 32

TALBALBA WALLY P109 (S)

Tattoo: P109Born: 12/09/2018Rego No.: R5XP109

SOUTH BUKALONG WALKER 6 (AI) (P)
SOUTH BUKALONG WALLACE 2 (P)
SOUTH BUKALONG VICTORIA 152 (P)
SIRE: TALBALBA WALLACE H83 (AI) (S)
NORTH END X061 (H)
TALBALBA LIONESS F066 (H)
TALBALBA LIONESS C069 (H)

MONREID P EXPRESS X001 ET1 (AI) (ET) (H)
COOTHARABA MENDEZ (H)
COOTHARABA SINCERITY 15 (H)
DAM: TALBALBA DOREEN H54 (H)
BUNDARRA ZAY (H)
JINDALEE DOREEN E020 (H)
JINDALEE DOREEN A001 (H)



Wallace H83 has produced practical cattle which grow and have weight for age while increasing calving ease. This bloke is no exception and is wrapped up in a soft, slick skin.

| June 2020 Hereford GROUP BREEDPLAN | | | | | | | | | | | | | | | | |
|--------------------------------------------------------|--------|---------------------------------------|------|-----|-----|---------------------------------------|-----|------|------|---------------------------------------|------|------|------|---------------------------------------|-------|-------|
| CEDir | CEDtrs | GL | BW | 200 | 400 | 600 | MCW | MILK | SS | DC | C WT | EMA | RIB | RUMP | RBY % | IMF % |
| +0.2 | +3.6 | +0.2 | +7.1 | +41 | +63 | +100 | +78 | +14 | +1.5 | -1.6 | +57 | +2.5 | +0.2 | +0.3 | +1.4 | +0.5 |
| 45% | 37% | 54% | 73% | 68% | 67% | 66% | 61% | 55% | 76% | 35% | 56% | 50% | 54% | 58% | 52% | 52% |
| \$Index values: | | Southern Self-Replacing Index: +\$168 | | | | Northern Self-Replacing Index: +\$147 | | | | Southern Baldy Maternal Index: +\$167 | | | | Northern Baldy Terminal Index: +\$112 | | |
| Traits Observed: CE,BWT,200WT,400WT,SS,FAT,EMA,IMF,DOC | | | | | | | | | | | | | | | | |

Purchaser: _____ Price: \$ _____

23

Lot 33

Tattoo: Talbalba Wally P201 (H) Born: Rego No.:

SIRE: TALBALBA WALLACE H83 (S)



DAM: TALBALBA MONICA B172(H)

Last calf of the great old B172 cow, P201 is deep and thick with a good skin. His EBVs are only mid parent values as he was not registered.

| June 2020 Hereford GROUP BREEDPLAN | | | | | | | | | | | | | | | | |
|------------------------------------|--------|--------------------------------|------|-----|-----|--------------------------------|-----|------|------|--------------------------------|------|-----|--------------------------------|------|-------|-------|
| CEDir | CEDtrs | GL | BW | 200 | 400 | 600 | MCW | MILK | SS | DC | C WT | EMA | RIB | RUMP | RBY % | IMF % |
| -0.4 | +6.5 | -1.3 | +7.1 | +40 | +65 | +97 | +86 | +17 | +2.0 | -2.0 | 57 | 2.5 | +0.8 | +1.2 | +0.3 | +1.0 |
| | | | | | | | | | | | | | | | | |
| \$Index values: | | Southern Self-Replacing Index: | | | | Northern Self-Replacing Index: | | | | Southern Baldy Maternal Index: | | | Northern Baldy Terminal Index: | | | |

Traits Observed:

Purchaser: Price: \$

Lot 34

Tattoo: P050 Born: 21/08/2018 Rego No.: R5XP050

SOUTH BUKALONG WALKER 6 (AI) (P)
SOUTH BUKALONG WALLACE 2 (P)
SOUTH BUKALONG VICTORIA 152 (P)
SIRE: TALBALBA WALLACE H83 (AI) (S)
NORTH END X061 (H)
TALBALBA LIONESS F066 (H)
TALBALBA LIONESS C069 (H)

BUNDARRA WALLY (H)
TALBALBA VALUER (H)
TALBALBA CHOICE 74 (AI) (H)
DAM: TALBALBA TOGA K150 (S)
REMITALL BOOMER 46B (IMP CAN) (P)
TALBALBA TOGA E026 (AI) (P)
KARINA TOGA V88 (AI) (ET) (P)

High growth (top 15%) bull with marbling (top 35%) and high CEDtrs.

| June 2020 Hereford GROUP BREEDPLAN | | | | | | | | | | | | | | | | |
|------------------------------------|--------|---------------------------------------|------|-----|-----|---------------------------------------|-----|------|------|---------------------------------------|------|------|---------------------------------------|------|-------|-------|
| CEDir | CEDtrs | GL | BW | 200 | 400 | 600 | MCW | MILK | SS | DC | C WT | EMA | RIB | RUMP | RBY % | IMF % |
| +0.4 | +6.8 | -1 | +6.9 | +37 | +62 | +93 | +79 | +12 | +3.9 | -2.9 | +49 | +1.9 | +0.4 | +0.4 | +0.5 | +0.6 |
| 44% | 37% | 54% | 72% | 67% | 67% | 65% | 61% | 54% | 76% | 37% | 55% | 50% | 54% | 58% | 52% | 53% |
| \$Index values: | | Southern Self-Replacing Index: +\$156 | | | | Northern Self-Replacing Index: +\$136 | | | | Southern Baldy Maternal Index: +\$153 | | | Northern Baldy Terminal Index: +\$101 | | | |

Traits Observed: CE,BWT,200WT,400WT,SS,FAT,EMA,IMF,DOC

Purchaser: Price: \$

Lot 35

Tattoo: P172 Born: 03/10/2018 Rego No.: R5XP172

MELVILLE EXCEL E443 (P)
DAYS ELABORATE J59 (AI) (P)
DAYS CORA E38 (AI) (P)
SIRE: DAYS GALLIPOLI L142 (PP)
DAYS CALIBRE G74 (PP)
DAYS FANCY J76 (AI) (P)
DAYS FANCY F38 (AI) (P)



GLENDAN PARK STORM W134 (H)
BOWMONT STORM C115 (AI) (H)
BOWMONT L MINERVA Y314 (H)
DAM: TALBALBA MONICA K177 (H)
BUNDARRA VICAR (H)
BUNDARRA MONICA Y101 (H)
BUNDARRA MONICA R10 (HPR) (H)

Calving ease bull with muscle (top 10%). Stylish, slick skinned bull.

| June 2020 Hereford GROUP BREEDPLAN | | | | | | | | | | | | | | | | |
|------------------------------------|--------|---------------------------------------|------|-----|-----|---------------------------------------|-----|------|------|---------------------------------------|------|------|---------------------------------------|------|-------|-------|
| CEDir | CEDtrs | GL | BW | 200 | 400 | 600 | MCW | MILK | SS | DC | C WT | EMA | RIB | RUMP | RBY % | IMF % |
| +6.5 | +0.6 | -0.4 | +3.9 | +31 | +54 | +82 | +77 | +10 | +2.7 | -2.5 | +57 | +5.5 | +0.3 | +0.7 | +1.7 | +0.4 |
| 43% | 32% | 59% | 72% | 67% | 67% | 65% | 59% | 47% | 75% | 32% | 57% | 50% | 54% | 57% | 51% | 55% |
| \$Index values: | | Southern Self-Replacing Index: +\$151 | | | | Northern Self-Replacing Index: +\$145 | | | | Southern Baldy Maternal Index: +\$162 | | | Northern Baldy Terminal Index: +\$124 | | | |

Traits Observed: CE,BWT,200WT,400WT,SS,FAT,EMA,IMF,DOC,Genomics

Purchaser: Price: \$

Lot 36

Tattoo: P220 Born: 29/11/2018 Rego No.: R5XP220

MELVILLE EXCEL E443 (P)
DAYS ELABORATE J59 (AI) (P)
DAYS CORA E38 (AI) (P)
SIRE: DAYS GALLIPOLI L142 (PP)
DAYS CALIBRE G74 (PP)
DAYS FANCY J76 (AI) (P)
DAYS FANCY F38 (AI) (P)

COOTHARABA ELGIN 2 (H)
COOTHARABA MAGNUM (H)
COOTHARABA PAULINE 279 (H)
DAM: TALBALBA LENA G047 (AI) (H)
YARRAM LOTTERY S346 (H)
TALBALBA LENA A063 (H)
TALBALBA LENA 39 (H)

Youngest bull in the catalogue, lots of potential, top 1% muscle and 20% growth.

| June 2020 Hereford GROUP BREEDPLAN | | | | | | | | | | | | | | | | |
|------------------------------------|--------|---------------------------------------|------|-----|-----|---------------------------------------|-----|------|------|---------------------------------------|------|------|---------------------------------------|------|-------|-------|
| CEDir | CEDtrs | GL | BW | 200 | 400 | 600 | MCW | MILK | SS | DC | C WT | EMA | RIB | RUMP | RBY % | IMF % |
| +2.5 | +2.6 | -0.5 | +6.2 | +37 | +62 | +90 | +73 | +17 | +2.2 | -3 | +61 | +6.8 | -0.2 | +0.1 | +2.5 | +0.5 |
| 45% | 35% | 65% | 67% | 65% | 65% | 65% | 60% | 49% | 74% | 36% | 58% | 51% | 55% | 58% | 52% | 56% |
| \$Index values: | | Southern Self-Replacing Index: +\$169 | | | | Northern Self-Replacing Index: +\$156 | | | | Southern Baldy Maternal Index: +\$170 | | | Northern Baldy Terminal Index: +\$121 | | | |

Traits Observed: CE,BWT,200WT,400WT,SS,FAT,EMA,IMF,DOC,Genomics

Purchaser: Price: \$

Lot 37

TALBALBA EXECUTIVE P193 (S)

Tattoo: P193

Born: 04/10/2018

Rego No.: R5XP193

ALLENDAL VAGABOND A74 (AI) (P)
ALLENDAL WATERHOUSE D1 (PP)
ALLENDAL MARLINE X185 (P)
SIRE: DAYS EXECUTIVE K168 (PP)
ALLENDAL TIPPERARY D13 (AI) (ET) (P)
DAYS SILVIA G13 (AI) (P)
DAYS SILVIA E30 (AI) (P)

GLENDAN PARK STORM W134 (H)
BOWMONT STORM C115 (AI) (H)
BOWMONT L MINERVA Y314 (H)
DAM: TALBALBA CHOICE J120 (H)
COOTHARABA MAGNUM (H)
TALBALBA CHOICE D091 (AI) (H)
BUNDARRA CHOICE U111 (H)

Correct, well made bull with quality. Muscle top 20%.

| June 2020 Hereford GROUP BREEDPLAN | | | | | | | | | | | | | | | | |
|------------------------------------|--------|---------------------------------------|------|-----|-----|---------------------------------------|-----|------|------|---------------------------------------|------|------|------|--------------------------------------|-------|-------|
| CEDir | CEDtrs | GL | BW | 200 | 400 | 600 | MCW | MILK | SS | DC | C WT | EMA | RIB | RUMP | RBY % | IMF % |
| +0.9 | -1.8 | -1.6 | +4.9 | +34 | +53 | +79 | +69 | +15 | +1.7 | -0.9 | +46 | +4.6 | -0.5 | -0.6 | +1.9 | +0.1 |
| 45% | 39% | 59% | 72% | 67% | 67% | 67% | 62% | 51% | 76% | 36% | 57% | 51% | 55% | 59% | 53% | 54% |
| \$Index values: | | Southern Self-Replacing Index: +\$120 | | | | Northern Self-Replacing Index: +\$106 | | | | Southern Baldy Maternal Index: +\$125 | | | | Northern Baldy Terminal Index: +\$95 | | |

Traits Observed: CE,BWT,200WT,400WT,SS,FAT,EMA,IMF,DOC

Purchaser: _____ Price: \$ _____

Lot 38

TALBALBA EXECUTIVE P158 (S)

Tattoo: P158

Born: 27/09/2018

Rego No.: R5XP158

ALLENDAL VAGABOND A74 (AI) (P)
ALLENDAL WATERHOUSE D1 (PP)
ALLENDAL MARLINE X185 (P)
SIRE: DAYS EXECUTIVE K168 (PP)
ALLENDAL TIPPERARY D13 (AI) (ET) (P)
DAYS SILVIA G13 (AI) (P)
DAYS SILVIA E30 (AI) (P)

SOUTH BUKALONG WALLACE 2 (P)
WIRRUNA FORT F382 (ET) (PP)
MOUNT DIFFICULT LORNA B123 (P)
DAM: TALBALBA MINERVA K114 (P)
BOWMONT STORM C115 (AI) (H)
TALBALBA MINERVA H18 (H)
TALBALBA MINERVA D138 (H)

Moderate growth, low birth weight bull with good fertility data.

| June 2020 Hereford GROUP BREEDPLAN | | | | | | | | | | | | | | | | |
|------------------------------------|--------|---------------------------------------|------|-----|-----|---------------------------------------|-----|------|------|---------------------------------------|------|------|------|---------------------------------------|-------|-------|
| CEDir | CEDtrs | GL | BW | 200 | 400 | 600 | MCW | MILK | SS | DC | C WT | EMA | RIB | RUMP | RBY % | IMF % |
| +2.9 | +2.2 | -4.3 | +4.7 | +35 | +56 | +80 | +66 | +15 | +3.1 | -2.6 | +47 | +2.8 | +0.1 | +0.0 | +1.2 | +0.2 |
| 45% | 39% | 60% | 73% | 68% | 67% | 66% | 61% | 53% | 77% | 37% | 57% | 51% | 55% | 59% | 53% | 55% |
| \$Index values: | | Southern Self-Replacing Index: +\$138 | | | | Northern Self-Replacing Index: +\$124 | | | | Southern Baldy Maternal Index: +\$142 | | | | Northern Baldy Terminal Index: +\$102 | | |

Traits Observed: CE,BWT,200WT,400WT,SS,FAT,EMA,IMF,DOC,Genomics

Purchaser: _____ Price: \$ _____

Lot 39

TALBALBA EXECUTIVE P096 (P)

Tattoo: P096

Born: 05/09/2018

Rego No.: R5XP096

ALLENDAL VAGABOND A74 (AI) (P)
ALLENDAL WATERHOUSE D1 (PP)
ALLENDAL MARLINE X185 (P)
SIRE: DAYS EXECUTIVE K168 (PP)
ALLENDAL TIPPERARY D13 (AI) (ET) (P)
DAYS SILVIA G13 (AI) (P)
DAYS SILVIA E30 (AI) (P)

SOUTH BUKALONG WALKER 6 (AI) (P)
SOUTH BUKALONG WALLACE 2 (P)
SOUTH BUKALONG VICTORIA 152 (P)
DAM: TALBALBA CONSTANCE J036 (AI) (H#)
KJ 520E VICTOR 417L (IMP USA) (P)
TALBALBA CONSTANCE G110 (AI) (H#)
TALBALBA CONSTANCE E022 (H)

Nice carcase to this bull. Positive calving ease and high milk to top off the package.



| June 2020 Hereford GROUP BREEDPLAN | | | | | | | | | | | | | | | | |
|------------------------------------|--------|---------------------------------------|------|-----|-----|---------------------------------------|-----|------|------|---------------------------------------|------|------|------|---------------------------------------|-------|-------|
| CEDir | CEDtrs | GL | BW | 200 | 400 | 600 | MCW | MILK | SS | DC | C WT | EMA | RIB | RUMP | RBY % | IMF % |
| +3.7 | +4.3 | -4.8 | +4.2 | +36 | +51 | +72 | +53 | +21 | +1.6 | -1.6 | +47 | +4.2 | +0.2 | +0.1 | +1.6 | +0.3 |
| 46% | 39% | 63% | 73% | 68% | 68% | 67% | 62% | 53% | 77% | 39% | 58% | 52% | 56% | 60% | 54% | 56% |
| \$Index values: | | Southern Self-Replacing Index: +\$131 | | | | Northern Self-Replacing Index: +\$118 | | | | Southern Baldy Maternal Index: +\$141 | | | | Northern Baldy Terminal Index: +\$102 | | |

Traits Observed: CE,BWT,200WT,400WT,SS,FAT,EMA,IMF,DOC,Genomics

Purchaser: _____ Price: \$ _____

Lot 40

TALBALBA EXECUTIVE P132 (TW) (S)

Tattoo: P132

Born: 19/09/2018

Rego No.: R5XP132

ALLENDAL VAGABOND A74 (AI) (P)
ALLENDAL WATERHOUSE D1 (PP)
ALLENDAL MARLINE X185 (P)
SIRE: DAYS EXECUTIVE K168 (PP)
ALLENDAL TIPPERARY D13 (AI) (ET) (P)
DAYS SILVIA G13 (AI) (P)
DAYS SILVIA E30 (AI) (P)

COOTHARABA ELGIN 2 (H)
COOTHARABA MAGNUM (H)
COOTHARABA PAULINE 279 (H)
DAM: TALBALBA CHOICE F083 (AI) (H)
FOXFORH VALUABLE (H)
TALBALBA CHOICE B045 (H)
BUNDARRA CHOICE U37 (H)

Strong data set to improve carcase and CE. Good old Magnum mother.



| June 2020 Hereford GROUP BREEDPLAN | | | | | | | | | | | | | | | | |
|------------------------------------|--------|---------------------------------------|------|-----|-----|---------------------------------------|-----|------|------|---------------------------------------|------|------|------|--------------------------------------|-------|-------|
| CEDir | CEDtrs | GL | BW | 200 | 400 | 600 | MCW | MILK | SS | DC | C WT | EMA | RIB | RUMP | RBY % | IMF % |
| -0.3 | +3.0 | -1 | +5.0 | +31 | +59 | +80 | +76 | +19 | +3.3 | -3.1 | +48 | +5.8 | +0.1 | +0.2 | +1.7 | +0.5 |
| 47% | 41% | 64% | 68% | 67% | 66% | 67% | 63% | 56% | 70% | 38% | 59% | 51% | 56% | 60% | 53% | 57% |
| \$Index values: | | Southern Self-Replacing Index: +\$131 | | | | Northern Self-Replacing Index: +\$117 | | | | Southern Baldy Maternal Index: +\$130 | | | | Northern Baldy Terminal Index: +\$95 | | |

Traits Observed: 200WT,400WT,SS,FAT,EMA,IMF,DOC,Genomics

Purchaser: _____ Price: \$ _____

Lot 41

TALBALBA EXECUTIVE P004 (TW) (S)

Tattoo: P004

Born: 29/07/2018

Rego No.: R5XP004

ALLENDAL VAGABOND A74 (AI) (P)
ALLENDAL WATERHOUSE D1 (PP)
ALLENDAL MARLINE X185 (P)
SIRE: DAYS EXECUTIVE K168 (PP)
ALLENDAL TIPPERARY D13 (AI) (ET) (P)
DAYS SILVIA G13 (AI) (P)
DAYS SILVIA E30 (AI) (P)

IRONBARK M428 HOT SHOT W264 (AI) (H)
TALBALBA WAVER (AI) (H)
TALBALBA MONICA A033 (H)
DAM: TALBALBA MONICA E096 (H)
FOXFORTH VALUABLE (H)
TALBALBA MONICA C068 (H)
BUNDARRA MONICA W104 (H)

Top 25% muscle, top 30% marbling, strong CEDtrs EBV.

| June 2020 Hereford GROUP BREEDPLAN | | | | | | | | | | | | | | | | |
|------------------------------------|--------|---------------------------------------|------|-----|-----|---------------------------------------|-----|------|------|---------------------------------------|------|------|------|--------------------------------------|-------|-------|
| CEDir | CEDtrs | GL | BW | 200 | 400 | 600 | MCW | MILK | SS | DC | C WT | EMA | RIB | RUMP | RBY % | IMF % |
| -0.3 | +2.7 | -2 | +5.6 | +37 | +60 | +81 | +65 | +17 | +3.2 | -2.7 | +48 | +4.2 | +0.6 | +1.0 | +0.7 | +0.3 |
| 44% | 36% | 59% | 70% | 64% | 62% | 63% | 60% | 54% | 61% | 33% | 55% | 47% | 51% | 55% | 49% | 53% |
| \$Index values: | | Southern Self-Replacing Index: +\$132 | | | | Northern Self-Replacing Index: +\$116 | | | | Southern Baldy Maternal Index: +\$129 | | | | Northern Baldy Terminal Index: +\$89 | | |

Traits Observed: BWT,200WT,DOC

Purchaser: _____ Price: \$ _____

Lot 42

TALBALBA ADVANCE P044 (AI) (H)

Tattoo: P044

Born: 17/08/2018

Rego No.: R5XP044

INJEMIRA ADVANCE C085 (H)
DEVON COURT ADVANCE F052 (H)
DEVON COURT LIONESS A207 (H)
SIRE: TALBALBA ADVANCE K246 (H)
COOTHARABA MAGNUM (H)
TALBALBA LENA G047 (AI) (H)
TALBALBA LENA A063 (H)

MONREID P EXPRESS X001 ET1 (AI) (ET) (H)
COOTHARABA MENDEZ (H)
COOTHARABA SINCERITY 15 (H)
DAM: TALBALBA LIONESS H134 (H)
NORTH END X061 (H)
TALBALBA LIONESS E170 (H)
BUNDARRA LIONESS Z81 (H)



Growthy bull with carcase (top 10% muscle and marbling) and CE data where you want it. Good bull.

| June 2020 Hereford GROUP BREEDPLAN | | | | | | | | | | | | | | | | |
|------------------------------------|--------|---------------------------------------|------|-----|-----|---------------------------------------|-----|------|------|---------------------------------------|------|------|------|---------------------------------------|-------|-------|
| CEDir | CEDtrs | GL | BW | 200 | 400 | 600 | MCW | MILK | SS | DC | C WT | EMA | RIB | RUMP | RBY % | IMF % |
| +2.3 | +2.6 | +1.6 | +5.3 | +32 | +49 | +76 | +42 | +17 | +3.1 | -2.3 | +49 | +5.3 | +0.4 | +0.6 | +1.8 | +1.3 |
| 40% | 32% | 72% | 70% | 65% | 64% | 63% | 58% | 49% | 74% | 31% | 53% | 47% | 52% | 56% | 50% | 49% |
| \$Index values: | | Southern Self-Replacing Index: +\$160 | | | | Northern Self-Replacing Index: +\$147 | | | | Southern Baldy Maternal Index: +\$159 | | | | Northern Baldy Terminal Index: +\$108 | | |

Traits Observed: GL,CE,BWT,200WT,400WT,SS,FAT,EMA,IMF,DOC,Genomics

Purchaser: _____ Price: \$ _____

Lot 43

TALBALBA JUST P122 (H)

Tattoo: P122

Born: 16/09/2018

Rego No.:

SIRE: WARWICK COURT JUST J140 (H)



DAM: UNREGISTERED COW

Heavy bodied, easy doing commercial bull. Hard working mother always has one of the heaviest weaners.

| June 2020 Hereford GROUP BREEDPLAN | | | | | | | | | | | | | | | | |
|------------------------------------|--------|--------------------------------|----|-----|-----|--------------------------------|-----|------|----|--------------------------------|------|-----|-----|--------------------------------|-------|-------|
| CEDir | CEDtrs | GL | BW | 200 | 400 | 600 | MCW | MILK | SS | DC | C WT | EMA | RIB | RUMP | RBY % | IMF % |
| | | | | | | | | | | | | | | | | |
| | | | | | | | | | | | | | | | | |
| \$Index values: | | Southern Self-Replacing Index: | | | | Northern Self-Replacing Index: | | | | Southern Baldy Maternal Index: | | | | Northern Baldy Terminal Index: | | |

Traits Observed:

Purchaser: _____ Price: \$ _____

Lot 44

TALBALBA ADVANCE P067 (AI) (H)

Tattoo: P067

Born: 28/08/2018

Rego No.: R5XP067

INJEMIRA ADVANCE C085 (H)
DEVON COURT ADVANCE F052 (H)
DEVON COURT LIONESS A207 (H)
SIRE: TALBALBA ADVANCE K246 (H)
COOTHARABA MAGNUM (H)
TALBALBA LENA G047 (AI) (H)
TALBALBA LENA A063 (H)

GLENDAN PARK STORM W134 (H)
BOWMONT STORM C115 (AI) (H)
BOWMONT L MINERVA Y314 (H)
DAM: TALBALBA CHOICE K121 (H)
BUNDARRA WALLY (H)
TALBALBA CHOICE C049 (H)
TALBALBA CHOICE 74 (AI) (H)



Thick, attractive bull who'll hack the hard going.

| June 2020 Hereford GROUP BREEDPLAN | | | | | | | | | | | | | | | | |
|------------------------------------|--------|--------------------------------------|------|-----|-----|--------------------------------------|-----|------|------|--------------------------------------|------|------|------|--------------------------------------|-------|-------|
| CEDir | CEDtrs | GL | BW | 200 | 400 | 600 | MCW | MILK | SS | DC | C WT | EMA | RIB | RUMP | RBY % | IMF % |
| -7.6 | -5.3 | +2.0 | +8.0 | +32 | +45 | +74 | +68 | +10 | +1.7 | -0.3 | +32 | +2.1 | +0.2 | +0.4 | +0.3 | +0.5 |
| 40% | 32% | 72% | 70% | 65% | 64% | 63% | 58% | 48% | 75% | 31% | 53% | 47% | 52% | 56% | 49% | 49% |
| \$Index values: | | Southern Self-Replacing Index: +\$73 | | | | Northern Self-Replacing Index: +\$51 | | | | Southern Baldy Maternal Index: +\$59 | | | | Northern Baldy Terminal Index: +\$42 | | |

Traits Observed: GL,CE,BWT,200WT,400WT,SS,FAT,EMA,IMF,DOC,Genomics

Purchaser: _____ Price: \$ _____

Lot 45

TALBALBA JUST P188 (H)

Tattoo: P188

Born: 16/10/2018

Rego No.: R5XP188

MAWARRA UNIQUE C041 (AI) (H)
YARRAM UNIQUE F181 (H)
YARRAM FLOSSIE A096 (H)
SIRE: WARWICK COURT JUST J140 (AI) (H)
WARWICK COURT ZING Z123 (AI) (H)
WARWICK COURT MARITANA E102 (H)
WARWICK COURT MARITANA C123 (H)

INJEMIRA ADVANCE C085 (H)
DEVON COURT ADVANCE F052 (H)
DEVON COURT LIONESS A207 (H)
DAM: TALBALBA MONICA K81 (H)
MAWARRA TRAIL BLAZER (AI) (H)
TALBALBA MONICA E038 (AI) (H)
TALBALBA MONICA A033 (H)



Thick topped (top 5% muscle) bull with marbling (top 10%). Worth a look.

| June 2020 Hereford GROUP BREEDPLAN | | | | | | | | | | | | | | | | |
|------------------------------------|--------|---------------------------------------|------|-----|-----|--------------------------------------|-----|------|------|---------------------------------------|------|------|------|--------------------------------------|-------|-------|
| CEDir | CEDtrs | GL | BW | 200 | 400 | 600 | MCW | MILK | SS | DC | C WT | EMA | RIB | RUMP | RBY % | IMF % |
| -4 | -1.4 | +0.4 | +4.9 | +32 | +49 | +72 | +53 | +16 | +0.5 | +0.1 | +48 | +5.9 | +0.1 | +0.2 | +1.7 | +1.4 |
| 44% | 33% | 55% | 65% | 64% | 64% | 63% | 58% | 48% | 73% | 32% | 55% | 48% | 52% | 56% | 50% | 52% |
| \$Index values: | | Southern Self-Replacing Index: +\$112 | | | | Northern Self-Replacing Index: +\$98 | | | | Southern Baldy Maternal Index: +\$106 | | | | Northern Baldy Terminal Index: +\$78 | | |

Traits Observed: CE,200WT,400WT,SS,FAT,EMA,IMF,DOC,Genomics

Purchaser: _____ Price: \$ _____

Lot 46

TALBALBA JUST P216 (H)

Tattoo: P216

Born: 18/11/2018

Rego No.: R5XP216

MAWARRA UNIQUE C041 (AI) (H)
YARRAM UNIQUE F181 (H)
YARRAM FLOSSIE A096 (H)
SIRE: WARWICK COURT JUST J140 (AI) (H)
WARWICK COURT ZING Z123 (AI) (H)
WARWICK COURT MARITANA E102 (H)
WARWICK COURT MARITANA C123 (H)

YARRAM EXTRA 57U M629 ET1 (AI) (ET) (H)
CURRACABARK CRUSADER (AI) (H)
FAULKLAND CARNATION 42 (H)
DAM: TALBALBA CHOICE H115 (AI) (H)
COOTHARABA MAGNUM (H)
TALBALBA CHOICE D032 (AI) (H)
TALBALBA CHOICE A025 (AI) (H)

Younger bull who I think will keep getting better. Muscle top 20%.

| June 2020 Hereford GROUP BREEDPLAN | | | | | | | | | | | | | | | | |
|------------------------------------|--------|--------------------------------------|------|-----|-----|--------------------------------------|-----|------|------|--------------------------------------|------|------|------|--------------------------------------|-------|-------|
| CEDir | CEDtrs | GL | BW | 200 | 400 | 600 | MCW | MILK | SS | DC | C WT | EMA | RIB | RUMP | RBY % | IMF % |
| -5.8 | -2 | +1.6 | +5.2 | +33 | +45 | +66 | +53 | +17 | +0.0 | -0.8 | +44 | +4.5 | -0.5 | -0.6 | +2.3 | -0.2 |
| 43% | 33% | 56% | 62% | 64% | 63% | 62% | 56% | 47% | 68% | 32% | 53% | 46% | 50% | 53% | 47% | 48% |
| \$Index values: | | Southern Self-Replacing Index: +\$87 | | | | Northern Self-Replacing Index: +\$73 | | | | Southern Baldy Maternal Index: +\$77 | | | | Northern Baldy Terminal Index: +\$53 | | |

Traits Observed: CE,200WT,400WT,SS,FAT,EMA,IMF,DOC

Purchaser: _____ Price: \$ _____

Lot 47

TALBALBA JUST P179 (H)

Tattoo: P179

Born: 09/10/2018

Rego No.: R5XP179

MAWARRA UNIQUE C041 (AI) (H)
YARRAM UNIQUE F181 (H)
YARRAM FLOSSIE A096 (H)
SIRE: WARWICK COURT JUST J140 (AI) (H)
WARWICK COURT ZING Z123 (AI) (H)
WARWICK COURT MARITANA E102 (H)
WARWICK COURT MARITANA C123 (H)

GLENDAN PARK STORM W134 (H)
BOWMONT STORM C115 (AI) (H)
BOWMONT L MINERVA Y314 (H)
DAM: TALBALBA LENA J109 (H)
COOTHARABA MENDEZ (H)
TALBALBA LENA E155 (H)
TALBALBA LENA C070 (H)



| June 2020 Hereford GROUP BREEDPLAN | | | | | | | | | | | | | | | | |
|------------------------------------|--------|---------------------------------------|------|-----|-----|---------------------------------------|-----|------|------|---------------------------------------|------|------|------|---------------------------------------|-------|-------|
| CEDir | CEDtrs | GL | BW | 200 | 400 | 600 | MCW | MILK | SS | DC | C WT | EMA | RIB | RUMP | RBY % | IMF % |
| +4.0 | -0.1 | -0.4 | +3.5 | +32 | +53 | +78 | +58 | +21 | +0.6 | +0.2 | +54 | +4.3 | -0.7 | -0.9 | +2.2 | -0.1 |
| 44% | 34% | 52% | 72% | 64% | 60% | 62% | 56% | 46% | 55% | 30% | 52% | 43% | 48% | 52% | 46% | 48% |
| \$Index values: | | Southern Self-Replacing Index: +\$127 | | | | Northern Self-Replacing Index: +\$109 | | | | Southern Baldy Maternal Index: +\$142 | | | | Northern Baldy Terminal Index: +\$107 | | |

Traits Observed: CE,BWT,200WT,400WT,SS,FAT,EMA,IMF,DOC

Purchaser: _____ Price: \$ _____

Lot 48

TALBALBA THE HOFF P045 (AI) (H#)

Tattoo: P045

Born: 16/08/2018

Rego No.: R5XP045

DRF JWR PRINCE VICTOR 711 (P)
TH 122 711 VICTOR 719T (IMP USA) (P)
KBCR 19D DOMINETTE 122 (P)
SIRE: H VICTOR 0136 (IMP USA) (P)
GO EXCEL L18 (P)
H LADY EXCELL 824 ET (P)
BR DM GOLDRIANNA 3001 ET (P)

COWBOY OUTLAW ET (ET) (H)
FOXFORTH VALUABLE (H)
FOXFORTH CHIC 8 (H)
DAM: TALBALBA CHOICE F030 (AI) (H)
MOORLANDS GRAND NATIONAL V045 (AI) (H)
TALBALBA CHOICE A030 (H)
BUNDARRA CHOICE P31 (H)

High growth bull (top 5%) with muscle (top 15%).

| June 2020 Hereford GROUP BREEDPLAN | | | | | | | | | | | | | | | | |
|------------------------------------|--------|---------------------------------------|------|-----|-----|--------------------------------------|------|------|------|---------------------------------------|------|------|------|--------------------------------------|-------|-------|
| CEDir | CEDtrs | GL | BW | 200 | 400 | 600 | MCW | MILK | SS | DC | C WT | EMA | RIB | RUMP | RBY % | IMF % |
| -8.8 | -0.1 | -0.6 | +8.0 | +44 | +77 | +106 | +105 | +19 | +3.2 | -1.8 | +66 | +4.9 | -0.9 | -1.7 | +2.1 | +0.0 |
| 45% | 34% | 75% | 73% | 69% | 68% | 67% | 61% | 57% | 77% | 34% | 57% | 51% | 55% | 59% | 53% | 54% |
| \$Index values: | | Southern Self-Replacing Index: +\$125 | | | | Northern Self-Replacing Index: +\$99 | | | | Southern Baldy Maternal Index: +\$109 | | | | Northern Baldy Terminal Index: +\$78 | | |

Traits Observed: GL,CE,BWT,200WT,400WT,SS,FAT,EMA,IMF,DOC,Genomics

Purchaser: _____ Price: \$ _____

Lot 49

TALBALBA THE HOFF P019 (AI) (H#)

Tattoo: P019

Born: 04/08/2018

Rego No.: R5XP019

DRF JWR PRINCE VICTOR 71I (P)
TH 122 71I VICTOR 719T (IMP USA) (P)
KBCR 19D DOMINETTE 122 (P)
SIRE: H VICTOR 0136 (IMP USA) (P)
GO EXCEL L18 (P)
H LADY EXCELL 824 ET (P)
BR DM GOLDRIANNA 3001 ET (P)

COOTHARABA ELGIN 2 (H)
COOTHARABA MAGNUM (H)
COOTHARABA PAULINE 279 (H)
DAM: TALBALBA LIONESS E015 (AI) (H)
COURALLIE POMPEII (H)
BUNDARRA LIONESS T13 (AI) (H)
BUNDARRA LIONESS 46 (H)

Moderate growth, high calving ease bull with exceptional muscle pattern (top 5%).

| June 2020 Hereford GROUP BREEDPLAN | | | | | | | | | | | | | | | | |
|--------------------------------------------------------------------|--------|---------------------------------------|------|-----|-----|---------------------------------------|-----|------|------|---------------------------------------|------|------|------|---------------------------------------|-------|-------|
| CEDir | CEDtrs | GL | BW | 200 | 400 | 600 | MCW | MILK | SS | DC | C WT | EMA | RIB | RUMP | RBY % | IMF % |
| +3.4 | +1.9 | -4.2 | +5.4 | +42 | +72 | +98 | +77 | +21 | +1.8 | -0.9 | +70 | +6.4 | -0.4 | -0.8 | +2.6 | +0.0 |
| 46% | 37% | 75% | 73% | 68% | 67% | 66% | 61% | 58% | 75% | 36% | 56% | 51% | 54% | 57% | 51% | 54% |
| \$Index values: | | Southern Self-Replacing Index: +\$167 | | | | Northern Self-Replacing Index: +\$151 | | | | Southern Baldy Maternal Index: +\$178 | | | | Northern Baldy Terminal Index: +\$131 | | |
| Traits Observed: GL,CE,BWT,200WT,400WT,SS,FAT,EMA,IMF,DOC,Genomics | | | | | | | | | | | | | | | | |

Purchaser: _____ Price: \$ _____

Lot 50

TALBALBA WALLY P094 (S)

Tattoo: P094

Born: 05/09/2018

Rego No.: R5XP094

SOUTH BUKALONG WALKER 6 (AI) (P)
SOUTH BUKALONG WALLACE 2 (P)
SOUTH BUKALONG VICTORIA 152 (P)
SIRE: TALBALBA WALLACE H83 (AI) (S)
NORTH END X061 (H)
TALBALBA LIONESS F066 (H)
TALBALBA LIONESS C069 (H)

GLENDAN PARK STORM W134 (H)
BOWMONT STORM C115 (AI) (H)
BOWMONT L MINERVA Y314 (H)
DAM: TALBALBA MINERVA H314 (H)
CHARNOCK FIREBALL (AI) (H)
TALBALBA MINERVA C091 (AI) (H)
BUNDARRA MINERVA S26 (AI) (H)

Long bodied bull with good calving ease data.

| June 2020 Hereford GROUP BREEDPLAN | | | | | | | | | | | | | | | | |
|--------------------------------------------------------|--------|---------------------------------------|------|-----|-----|---------------------------------------|-----|------|------|---------------------------------------|------|------|------|---------------------------------------|-------|-------|
| CEDir | CEDtrs | GL | BW | 200 | 400 | 600 | MCW | MILK | SS | DC | C WT | EMA | RIB | RUMP | RBY % | IMF % |
| +5.3 | +2.3 | -1 | +4.9 | +36 | +58 | +88 | +83 | +14 | +0.4 | -0.4 | +54 | +1.0 | -0.5 | -0.8 | +1.0 | +0.1 |
| 45% | 39% | 53% | 72% | 68% | 67% | 66% | 62% | 56% | 76% | 37% | 56% | 51% | 55% | 59% | 53% | 54% |
| Index values: | | Southern Self-Replacing Index: +\$133 | | | | Northern Self-Replacing Index: +\$114 | | | | Southern Baldy Maternal Index: +\$151 | | | | Northern Baldy Terminal Index: +\$115 | | |
| Traits Observed: CE,BWT,200WT,400WT,SS,FAT,EMA,IMF,DOC | | | | | | | | | | | | | | | | |

Purchaser: _____ Price: \$ _____

Lot 51

TALBALBA WALLY P098 (S)

Tattoo: P098

Born: 06/09/2018

Rego No.: R5XP098

SOUTH BUKALONG WALKER 6 (AI) (P)
SOUTH BUKALONG WALLACE 2 (P)
SOUTH BUKALONG VICTORIA 152 (P)
SIRE: TALBALBA WALLACE H83 (AI) (S)
NORTH END X061 (H)
TALBALBA LIONESS F066 (H)
TALBALBA LIONESS C069 (H)

GLENDAN PARK STORM W134 (H)
BOWMONT STORM C115 (AI) (H)
BOWMONT L MINERVA Y314 (H)
DAM: TALBALBA CHOICE G115 (H)
BUNDARRA YOEMAN (H)
BUNDARRA CHOICE C1 (H)
BUNDARRA CHOICE W122 (H)

| June 2020 Hereford GROUP BREEDPLAN | | | | | | | | | | | | | | | | |
|--------------------------------------------------------|--------|---------------------------------------|------|-----|-----|---------------------------------------|-----|------|------|---------------------------------------|------|------|------|---------------------------------------|-------|-------|
| CEDir | CEDtrs | GL | BW | 200 | 400 | 600 | MCW | MILK | SS | DC | C WT | EMA | RIB | RUMP | RBY % | IMF % |
| +4.8 | +1.3 | -0.7 | +4.9 | +35 | +58 | +91 | +88 | +15 | +0.7 | -0.9 | +56 | +1.8 | +0.1 | +0.2 | +0.8 | +0.3 |
| 44% | 38% | 50% | 73% | 67% | 66% | 65% | 60% | 55% | 75% | 36% | 54% | 49% | 52% | 56% | 50% | 52% |
| \$Index values: | | Southern Self-Replacing Index: +\$136 | | | | Northern Self-Replacing Index: +\$118 | | | | Southern Baldy Maternal Index: +\$152 | | | | Northern Baldy Terminal Index: +\$117 | | |
| Traits Observed: CE,BWT,200WT,400WT,SS,FAT,EMA,IMF,DOC | | | | | | | | | | | | | | | | |

Purchaser: _____ Price: \$ _____

Lot 52

TALBALBA JUST P202 (H)

Tattoo: P202

Born: 29/10/2018

Rego No.: R5XP202

MAWARRA UNIQUE C041 (AI) (H)
YARRAM UNIQUE F181 (H)
YARRAM FLOSSIE A096 (H)
SIRE: WARWICK COURT JUST J140 (AI) (H)
WARWICK COURT ZING Z123 (AI) (H)
WARWICK COURT MARITANA E102 (H)
WARWICK COURT MARITANA C123 (H)

COORA GOVERNOR U051 (AI) (H)
NORTH END X061 (H)
GVPC DOREEN R035 (H)
DAM: TALBALBA MONICA F127 (H)
CHARNOCK FIREBALL (AI) (H)
TALBALBA MONICA C053 (AI) (H)
BUNDARRA MONICA Y38 (H)

Deep, easy doing bull.

| June 2020 Hereford GROUP BREEDPLAN | | | | | | | | | | | | | | | | |
|------------------------------------------------|--------|---------------------------------------|------|-----|-----|---------------------------------------|-----|------|------|---------------------------------------|------|------|------|--------------------------------------|-------|-------|
| CEDir | CEDtrs | GL | BW | 200 | 400 | 600 | MCW | MILK | SS | DC | C WT | EMA | RIB | RUMP | RBY % | IMF % |
| +1.8 | +3.3 | +0.2 | +4.0 | +28 | +53 | +78 | +62 | +20 | +2.1 | -1.4 | +50 | +4.1 | -0.6 | -1 | +2.0 | +0.3 |
| 44% | 33% | 54% | 62% | 64% | 63% | 61% | 56% | 49% | 69% | 33% | 53% | 46% | 49% | 53% | 47% | 48% |
| \$Index values: | | Southern Self-Replacing Index: +\$133 | | | | Northern Self-Replacing Index: +\$114 | | | | Southern Baldy Maternal Index: +\$139 | | | | Northern Baldy Terminal Index: +\$99 | | |
| Traits Observed: CE,200WT,400WT,SS,FAT,EMA,IMF | | | | | | | | | | | | | | | | |

Purchaser: _____ Price: \$ _____

Lot 53

TALBALBA EXECUTIVE P163 (P)

Tattoo: P163

Born: 28/09/2018

Rego No.: R5XP163

ALLENDALDE VAGABOND A74 (AI) (P)
ALLENDALDE WATERHOUSE D1 (PP)
ALLENDALDE MARLINE X185 (P)
SIRE: DAYS EXECUTIVE K168 (PP)
ALLENDALDE TIPPERARY D13 (AI) (ET) (P)
DAYS SILVIA G13 (AI) (P)
DAYS SILVIA E30 (AI) (P)

DEBARRY ROCKY C303 (P)
YAVENVALE FUNCTIONAL F273 (S)
YAVENVALE JULIET B136 (AI) (H)
DAM: TALBALBA COURTNEY J065 (H#)
YALGOO DOMINO S71 (TW) (S)
BELLCO COURTNEY Z10 (P)
BELLCO BONNIE MIXER S102 (P)

High growth bull (top5%) with muscle (top 15%).

| June 2020 Hereford GROUP BREEDPLAN | | | | | | | | | | | | | | | | |
|------------------------------------|--------|---------------------------------------|------|-----|-----|---------------------------------------|------|------|------|---------------------------------------|------|------|------|---------------------------------------|-------|-------|
| CEDir | CEDtrs | GL | BW | 200 | 400 | 600 | MCW | MILK | SS | DC | C WT | EMA | RIB | RUMP | RBY % | IMF % |
| -3.2 | +1.4 | -2.6 | +7.7 | +44 | +74 | +106 | +102 | +18 | +1.8 | -1.5 | +63 | +4.9 | -0.4 | -0.6 | +1.7 | +0.3 |
| 43% | 35% | 56% | 73% | 68% | 68% | 67% | 60% | 52% | 77% | 34% | 57% | 51% | 54% | 59% | 52% | 53% |
| Index values: | | Southern Self-Replacing Index: +\$145 | | | | Northern Self-Replacing Index: +\$122 | | | | Southern Baldy Maternal Index: +\$142 | | | | Northern Baldy Terminal Index: +\$104 | | |

Traits Observed: CE,BWT,200WT,400WT,SS,FAT,EMA,IMF,DOC

Purchaser: _____ Price: \$ _____



Thank you to everyone who supported our 3rd on-property Bull Sale in 2019



CONTINUING TO WORK FOR YOU.

SBB/GDL, the team devoted to getting the best results for our commercial and stud stock clients. Supported by 20 branches serviced by a dedicated team of local livestock agents.

SAME... team, name and vision.

Relax when you use **OUR TEAM.**



Alice Springs • Barcaldine • Blackall • Chinchilla • Cunnamulla • Dalby • Goondiwindi • Longreach
Kingaroy • Meandarra • Miles • Mitchell • Moura • Quilpie • Rockhampton • Roma • St. George
Taroom • Toowoomba • Wandoan

Harvey Weyman-Jones 0414 941 788

Mark Duthie 0448 016 950

Peter Brazier 0407 525 983

Georgie Connor 0428 347 550

Josh Heck 0409 732 676

Harry Phillips 0429 928 666

NUTRIEN AG SOLUTIONS® TOOWOOMBA

PROVIDING QUALITY AGRICULTURAL SERVICES ACROSS SOUTH EAST QUEENSLAND

Nutrien Ag Solutions is committed to providing clients with services and expertise to better their farming operation.

Specialising in:

- Rural Merchandise
- Fertiliser
- Insurance
- Real Estate
- Livestock
- Wool
- Finance
- Equine

| | | |
|--------------------------------|--------------------------|----------------|
| Nutrien Ag Solutions Toowoomba | 388 Taylor St, Toowoomba | (07) 4637 3000 |
| Branch Manager | Guy Pitman | 0428 740 151 |
| Merchandise Manager | Rob Wiemers | (07) 4637 3001 |
| Livestock | Simon Booth | 0438 756 245 |
| | Andrew Costello | 0429 485 191 |
| | Jenny Radke | (07) 4637 3000 |
| Stud Stock | Colby Ede | 0417 265 980 |
| Finance | Robert Moncrieff | 0408 296 052 |
| Insurance | Brad Merrin | 0409 036 799 |

NutrienAgSolutions.com.au

Nutrien
Ag Solutions®

QUEENSLAND LIVESTOCK AGENTS ASSOCIATION LIMITED
STANDARD STUD STOCK - AUCTION TERMS AND ~ CONDITIONS OF SALE

- IMPORTANT NOTICE**
All bids shall be treated as offers made upon the following Terms and Conditions of Sale and all persons present are admitted to attend the sale on the basis that they have notice of these Terms and Conditions.
1. The highest bidder shall, subject to Condition 2, be the purchaser provided that the vendor reserves the right to bid either by himself or through his agent or auctioneer and should any dispute arise among the bidders for any lot, during or immediately after sale of the lot, it shall be settled at the auctioneers absolute discretion who may, should one of the disputants advance, put the lot or lots up again. The bidding from time to time shall be regulated by the auctioneer and no bid shall be retracted.
2. The sale will be conducted on a "Sale" or "No Sale" basis whereby the lot for sale shall be knocked down to the highest bidder, but the sale will be subject to the acceptance of the highest bid by the vendor who will immediately after the fall of the hammer declare "Sale" or "No Sale" Should the vendor reject the bid of the highest bidder such bidder will have the right of first refusal of the lot at the vendor's nominated price for one hour after the lot has been passed out of the ring on the Terms and Conditions herein set forth in so far as they shall apply.
3. The details of the purchaser, the purchase price and the lot sold as recorded by the sale clerk for and on behalf of the auctioneer shall be equally binding on both purchaser and vendor.
4. The auctioneer expressly reserves the right, without giving any reason therefore, to:
- (a) Refuse to acknowledge any bid;
- (b) Withdraw any lot or lots before or during the sale;
- (c) Exclude any person from the auction venue should it think fit.
5. Each lot in all cases shall be at the risk and expense of the purchaser, upon acceptance of his bid by the vendor or upon acceptance of the highest bidder's offer by the vendor whichever shall be the earlier.
6. Except as expressly provided in these Terms and Conditions of Sale no guarantee or warranty shall be given in respect of any lot sold under these Conditions as to pedigree, sex, age, breeding condition or otherwise howsoever, and no guarantee, warranty or condition whatsoever shall be implied from any affirmation made before or at the time of the sale, or from any circumstances of the sale, but in all cases where a guarantee is intended the same shall attach and be enforceable only if reduced to writing before delivery of the lot and signed by the vendor or by the auctioneer acting as agent for the vendor, and the absence of such writing shall be conclusive evidence in case of dispute that no guarantee warranty or condition whatsoever was given or implied.
7. In the event of any dispute in respect to the sale of any lot.
- (i) The purchaser shall nevertheless be obliged to pay to the auctioneer the full purchase price and any other moneys or interest payable by the purchaser in accordance with these terms and conditions;
- (ii) The vendor and the purchaser shall resolve the dispute between themselves;
- (iii) The auctioneer shall have no liability or responsibility in regard to the dispute; and
- (iv) No lot shall be returned to the auctioneer and the purchaser shall indemnify the auctioneer for all costs, expenses and damages which the auctioneer is put to or incurs by reason of the purchaser so doing.
8. The name of the vendor for whom the auctioneer acts is acknowledged to have been furnished to purchasers prior to sale and further particulars will in all cases be furnished to a purchaser if required ~ the case of any dispute the remedy of the purchaser shall be against the vendor only and in no case or under any circumstances against the auctioneer who is to be regarded for all intents and purposes as agent for a disclosed principal.
9. (a) **PAYMENT** – Unless prior credit arrangements have been made in writing with the auctioneer the full purchase price for each lot shall be due and payable to the auctioneer in cash upon acceptance of the highest bid or the highest bidder's offer by the vendor and prior to delivery. Notwithstanding that delivery is given to or possession obtained by the purchaser or his representative prior to the payment of the purchase money in full the property in any lot which is sold shall not pass to the purchaser until the full purchase price and all cheques, promissory notes, bills of exchange, acceptance orders or drafts given in connection with such payment have been paid and liquidated, and until property shall pass, the purchaser shall hold such lot as bailee, provided that in all cases should such payment not have been made and liquidated within 14 days of the date of the sale the auctioneer reserves the right to:
- (i) Rescind the contract on behalf of the vendor and repossess and resell any lot;
- (ii) Recover from the purchaser interest upon the purchase price at a rate per annum which aggregates the 90 day Bill Rate plus two percentum. For the purposes of this condition "the 90 day Bill Rate" is the rate published regularly in the Australian Financial Review, expressed as a percentage per annum. If at any time the Financial Review ceases to publish a 90 day Bill Rate, the auctioneer shall determine and advise the purchaser of the interest rate to apply for the purpose of this condition.
- (b) The auctioneer is selling as the del credere agent of the vendor and the full purchase price of any lot sold shall be payable by the purchaser to the auctioneer and be fully recoverable by the auctioneer in its own name.
10. If the purchaser shall neglect or fail to comply with any of the within conditions, any lot purchased by him may be immediately resold by public auction or private contract, with or without notice, at the risk of the former purchaser, who will be held responsible for all loss and expenses arising out of such resale, and shall not participate in any profit accruing therefrom.
11. Any vendor or purchaser removing the sale number from any lot after it has been sold will fully indemnify all affected parties for any loss, costs or damage should the lot be wrongly delivered.
12. The purchasers, if more than one, shall be jointly and severally bound by these Terms and Conditions, and shall jointly and severally carry out and perform same.
13. Any person who advances a bid on a lot shall do so on the expressed condition and understanding that should that person's bid be the highest bid and such bid is accepted by the vendor, then that person will be held personally liable for the price so agreed upon, regardless of the fact that that person may be acting on behalf of another party, either disclosed or undisclosed to the vendor or the auctioneer, provided however, that this Condition shall not in any way negate the vendor's right to claim against any principal and in such case the bidder's liability shall be construed to be by way of guarantee.
14. The auctioneer may, should it think fit, make arrangements on a purchaser's behalf for the feeding, watering, trucking, shipping of and general attendance to any lot after sale but no responsibility will be accepted by the auctioneer and all such services will be at the purchaser's risk and expense.
15. No lot will be delivered until the sales invoice has been checked and signed by the purchaser or his duly authorised representative.
16. (a) Each lot in all cases shall be sold with all faults, if any, and excepting those conditions and warranties implied by the Trade Practices Act or any applicable State legislation which cannot be contractually excluded and excepting conditions and warranties expressly contained in these Terms and Conditions of Sale, any express or implied condition, statement or warranty, statutory or otherwise, is hereby excluded. The auctioneer is not liable in respect of any error, misdescription or omission in any particulars appearing or stated regarding the descriptions or pedigrees of any lot offered for sale and no such error, misdescription or omission shall entitle the purchaser to annul the sale or reject the lot or claim any compensation, damage or abatement in price.
- (b) Each lot will be sold subject to passing all veterinary tests required by the law of the State or country to which the purchaser intends to transport that particular lot, such tests to be undertaken at the purchaser's expense and concluded immediately following the sale. In the event of a lot failing to pass these tests, the sale shall be null and void, any purchase moneys paid by the purchaser shall be refunded and property in the lot shall revert to or remain with the vendor.
17. **GUARANTEES OF FERTILITY**
- 17.1 **BULLS.** Save and except for calves at foot, all bulls are guaranteed breeders and to so prove within six months of the date of sale or by reaching the age of 30 months whichever date shall be the later.
- 17.2 **FEMALES.** Save and except for female calves at foot, all females are guaranteed to be in calf or go into calf within six months of the date of sale or by the age of 30 months whichever date shall be the later. A positive pregnancy test certified by a qualified veterinary surgeon shall be sufficient evidence that the animal is in calf.
- 17.3 Claims under Clauses 17.1 and 17.2 guarantees of fertility shall be made to the vendor within six months from the date of sale or prior to the animal entering a quarantine area other than on the vendor's property.
- 17.3.1 All claims must be accompanied by a veterinary certificate which shall clearly identify the basis of the claim.
- 17.3.2 Infertility resulting from injury or disease occurring after the sale of the animal shall not be covered by this guarantee.

- 17.3.3 The vendor retains the right to have the animal placed on a property nominated by him or returned to his own property for further assessment of fertility for a period not exceeding six months. In the event of the animal being proven fertile within the period, the costs incurred shall be borne by the purchaser. In the event of the animal not being proven fertile within the period the costs incurred shall be borne by the vendor.
- 17.4 **LIABILITY OF A VENDOR.** Except for costs defined elsewhere in the conditions of sale, the liability of a vendor in respect of claims relating to fertility shall not exceed the purchase price of the animal(s) or to provide mutually agreed upon replacement animals.
- 17.5 **REFUNDS.** In the event of a claim being substantiated and the purchase price being refunded, the animal/s shall automatically become the property of the vendor and be returned to him or disposed of according to his instructions at his expense.
- 17.6 This guarantee shall be voided by the purchaser if
- (a) The animal is returned to the vendor
- (i) in poor physical condition or with any injury;
- (ii) tests carried out on behalf of the vendor within fourteen days of such return proved positive to any diseases which may affect the animals fertility or ability to breed naturally; or
- (b) the purchaser has collected and stored semen from a bull or embryos from a female.
- 17.7 In the event of a dispute as to whether a lot is a breeder, such dispute shall be resolved by the vendor and the purchaser and the auctioneer, while he will use his best endeavours to assist, shall have no liability or responsibility in that regard. In the event that a lot is alleged or proved not to be a breeder, the purchaser shall nevertheless be obliged to pay the auctioneer the full purchase price and any other monies or interest payable by the purchaser in accordance with these Terms and Conditions.
18. (a) Each lot shall be at the risk of the vendor in respect of any damage or injury, whether by disease, accident or otherwise, for the period that the lot be in the custody of the auctioneer, PROVIDED THAT the auctioneer, its servants, agents and employees shall use all reasonable care to protect and control the lot while it is in the auctioneer's custody AND PROVIDED THAT when a lot has been sold, it shall be at the risk of the purchaser in all respects.
- (b) If any vendor brings to the sale premises any lot which is dangerous, or infected with any disease, that vendor shall be liable for all injury, damages, costs, losses, or expenses which the auctioneer may sustain, incur or be put to either directly or indirectly as a result of the vendor so doing. The auctioneer reserves the right, at its absolute discretion, to exclude from the sale, or put out of the sale venue or dispose of, any lot which in its opinion shows signs of any disease, whether infectious, contagious or not, or of any serious fault or of being dangerous.
19. **DELIVERY** – Except at the discretion of the auctioneer no lot shall be delivered to the purchaser unless payment of the purchase money together with any additional charges incurred including those expenses incurred by the auctioneer pursuant to Condition 14 hereof, is first made by the purchaser to the auctioneer. Release of lots may be withheld by the auctioneer until personal cheques are cleared.
20. In these Conditions
- (a) References to "Auctioneer" shall be taken to mean as the context so admits, the selling agent or any member, subsidiary or related corporation or body, officer, agent or employee thereof, authorised by the vendor to conduct the sale of the lot;
- (b) "Purchaser" shall have the meaning ascribed to it in Condition 1;
- (c) "Vendor" shall mean the person or corporation upon whose account lots are offered for sale and where a stud or farm is named shall mean the proprietor of that stud or farm;
- (d) "Lot" shall be taken to mean the animal offered for sale and/or sold by the auctioneer on behalf of a vendor prior to the animal entering a quarantine area other than on the vendor's property.
- 17.3.1 All claims must be accompanied by a veterinary certificate which shall clearly identify the basis of the claim.
- 17.3.2 Infertility resulting from injury or disease occurring after the sale of the animal shall not be covered by this guarantee.
- 17.3.3 The vendor retains the right to have the animal placed on a property nominated by him or returned to his own property for further assessment of fertility for a period not exceeding six months. In the event of the animal being proven fertile within the period, the costs incurred shall be borne by the purchaser. In the event of the animal not being proven fertile within the period the costs incurred shall be borne by the vendor.
- 17.4 **LIABILITY OF A VENDOR.** Except for costs defined elsewhere in the conditions of sale, the liability of a vendor in respect of claims relating to fertility shall not exceed the purchase price of the animal(s) or to provide mutually agreed upon replacement animals.
- 17.5 **REFUNDS.** In the event of a claim being substantiated and the purchase price being refunded, the animal/s shall automatically become the property of the vendor and be returned to him or disposed of according to his instructions at his expense.
- 17.6 This guarantee shall be voided by the purchaser if
- (a) The animal is returned to the vendor:
- (i) in poor physical condition or with any injury;
- (ii) tests carried out on behalf of the vendor within fourteen days of such return proved positive to any diseases which may affect the animals fertility or ability to breed naturally; or
- (b) the purchaser has collected and stored semen from a bull or embryos from a female.
- 17.7 In the event of a dispute as to whether a lot is a breeder, such dispute shall be resolved by the vendor and the purchaser and the auctioneer, while he will use his best endeavours to assist, shall have no liability or responsibility in that regard. In the event that a lot is alleged or proved not to be a breeder, the purchaser shall nevertheless be obliged to pay the auctioneer the full purchase price and any other monies or interest payable by the purchaser in accordance with these Terms and Conditions.
18. (a) Each lot shall be at the risk of the vendor in respect of any damage or injury, whether by disease, accident or otherwise, for the period that the lot be in the custody of the auctioneer, PROVIDED THAT the auctioneer, its servants, agents and employees shall use all reasonable care to protect and control the lot while it is in the auctioneer's custody AND PROVIDED THAT when a lot has been sold, it shall be at the risk of the purchaser in all respects.
- (b) If any vendor brings to the sale premises any lot which is dangerous, or infected with any disease, that vendor shall be liable for all injury, damages, costs, losses, or expenses which the auctioneer may sustain, incur or be put to either directly or indirectly as a result of the vendor so doing. The auctioneer reserves the right, at its absolute discretion, to exclude from the sale, or put out of the sale venue or dispose of, any lot which in its opinion shows signs of any disease, whether infectious, contagious or not, or of any serious fault or of being dangerous.
19. **DELIVERY** – Except at the discretion of the auctioneer no lot shall be delivered to the purchaser unless payment of the purchase money together with any additional charges incurred including those expenses incurred by the auctioneer pursuant to Condition 14 hereof, is first made by the purchaser to the auctioneer. Release of lots may be withheld by the auctioneer until personal cheques are cleared.
20. In these Conditions:
- (a) References to "Auctioneer" shall be taken to mean as the context so admits, the selling agent or any member, subsidiary or related corporation or body, officer, agent or employee thereof, authorised by the vendor to conduct the sale of the lot;
- (b) "Purchaser" shall have the meaning ascribed to it in Condition 1;
- (c) "Vendor" shall mean the person or corporation upon whose account lots are offered for sale and where a stud or farm is named shall mean the proprietor of that stud or farm;
- (d) "Lot" shall be taken to mean the animal offered for sale and/or sold by the auctioneer on behalf of a vendor.

IMPORTANT NOTICE

The selling agent, its members, subsidiary or related corporations, officers, agents, and employees for themselves and for those for whom they act while exercising due care provide all information without responsibility and give no guarantee whatsoever as to its accuracy.

All persons who attend the sale do so entirely at their risk and the selling agent, its members, subsidiary or related corporations, officers, agents, employees and its principals, for themselves and for those for whom they act, do not assume or accept any responsibility or liability of whatever nature for any injury or damage whatsoever which may occur.

The hammer price is exclusive of GST but GST will be applied to the final hammer price and included on the invoice.

TALBALBA HEREFORDS 4th On Property Sale

BUYER'S INSTRUCTION SLIP

Name: _____

Address: _____

Email: _____

Phone No.: _____ Mobile: _____

Account No.: _____

Lots Purchased: _____

Total No. of Lots: _____

Road Transport Required: _____

Destination: _____

If arranging own transport (please give details): _____

Destination: _____

Date to be collected: _____

Insure for (period): _____

Transfer Registration Certificate to: _____

Other Instructions: _____

In the event of the above-mentioned Agent being unwilling to make settlement on my behalf, I agree to do so personally in full within fourteen (14) days from the date of Sale.

Signature of Buyer: _____

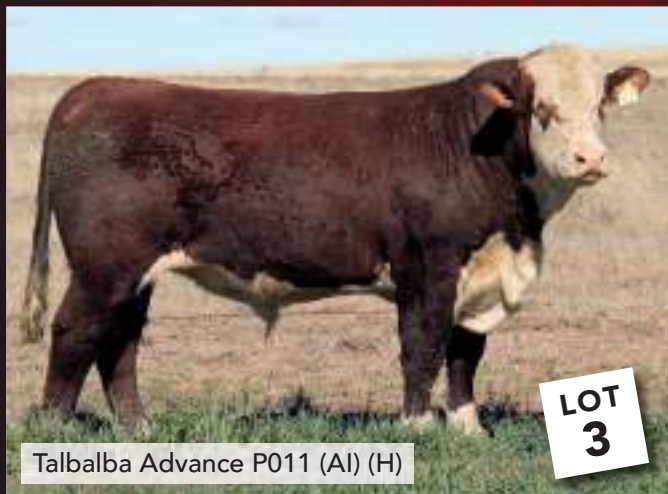
Date: Thursday 27 August 2020

NOTES



VIDEOS OF SALE BULLS CAN BE VIEWED VIA OUR WEBSITE

www.talbalba.com



Talbalba Advance P011 (AI) (H)



Talbalba Just P051 (AI) (H)



Talbalba Executive P039 (AI) (S)



Talbalba Gallipoli P072 (P)



Talbalba Executive P114 (PP)



Talbalba Executive P325 (S)



TALBALBA
HEREFORDS

STEVE AND DEB REID

1392 Nicol Creek Road, Millmerran (Bringalily), QLD

Phone 07 46957182 | Mobile 0427 631 014

Email: talbalbastud@bigpond.com

Web: www.talbalba.com